

# Gastric Adenocarcinoma in Adolescent Presenting with Massive Ascites: Two Cases Report

Teck King Tan <sup>1</sup>, Chien-Heng Lin <sup>1</sup>, An-Chyi Chen <sup>1</sup>, Shu-Fen Wu <sup>1</sup>, Kang-Hsi Wu <sup>6</sup>, Wei-Ching Lin <sup>3</sup>, Pei-Yu Chen <sup>4</sup>

Department of Gastroenterology <sup>1</sup>, and Oncology <sup>2</sup>, Children's Hospital of China Medical University, Taichung, Taiwan  
 Department of Radiology <sup>3</sup>, and Pathology <sup>4</sup>, China Medical University Hospital, Taichung, Taiwan

## Background

- Gastric adenocarcinoma in children
  - rare in children
  - nonspecific abdominal symptoms
  - poor prognosis
  - few information
  - diagnosis and treatment remains challenge

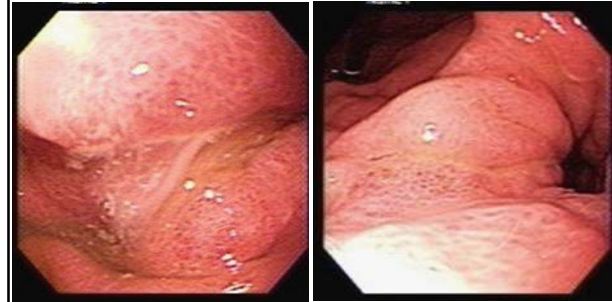
## Case 1

- 16 y/o boy
- abdominal fullness and poor appetite for 1 week
- BW loss of 8 kg in 2 weeks
- general diet habit
- smoking 0.33 ppd for about 1 year
- grandfather -> gastric cancer, died at 51 y/o

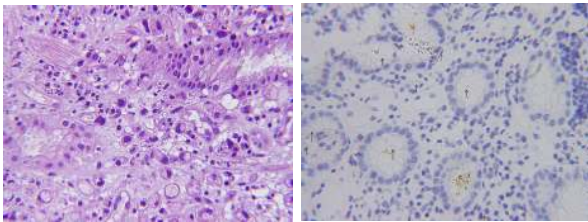
- Physical examination
  - Abdominal distension, dull on percussion, epigastric tenderness.
  - No palpable abdominal mass
  - Enlarged neck lymph nodes, level V

	Result	Normal range
WBC	11190/ul	3990-10390/ul
Neutrophil	80.4%	40-74%
LDH	90U/L	98-192U/L
CA125	109.1U/mL	<35U/mL
CEA	0.51ng/ml	<5 ng/ml
CA199	6.8U/ml	<35U/ml

- Ascites
  - RBC count: 4000/ul,
  - WBC count: 10707/ul with neutrophil 89%
  - Albumin: 2.9g/dL
  - Total protein: 4.2g/dL
  - Glucose: 97mg/dL,
  - LDH: 288U/L,
  - cytology -> malignant cellsshowed normal.



A large bizarre gastric ulcer (A2) (4x4 cm), snake skin and multiple nodular appearance at angular incisure



(R) poorly differentiated adenocarcinoma with the presence of signet ring cells (Hematoxylin and eosin 400 X).  
(L) x *H. pylori* were identified. (Warthin-Starry stains 400 X)

- T4NxM1, stage IV
- Chemotherapy
  - dexamethasone phosphate, oxaliplatin, capecitabine.
- died 10 months after diagnosis.

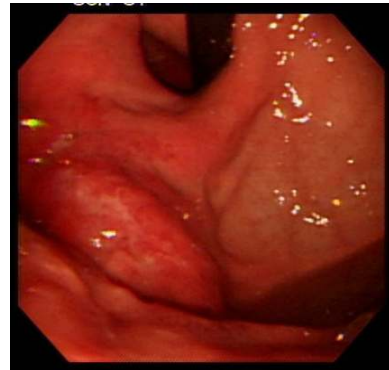
## Case 2

- 17 y/o girl
- abdominal fullness and poor appetite for 1 month
- nausea and severe hiccup for 2 weeks
- general diet habit
- no smoking
- grandfather -> colon cancer

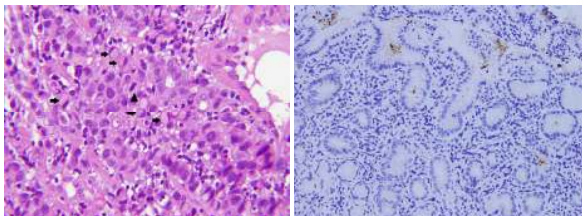
- Physical examination
  - abdominal distension, dull on percussion
  - no tenderness, palpable abdominal mass

	Result	Normal range
Hb	8.7gm/dL	12.0-16.0/ul
MCV	71.3fl	80-99fl
CRP	6.43mg/dL	<0.8mg/dL
CA125	312.9U/mL	<35U/mL
CEA	2.40ng/ml	<5 ng/ml
CA199	26.1U/ml	<35U/ml
$\beta$ -HCG	8.83mIU/mL	8.83mIU/mL

- Ascites
  - RBC count: 5000/ul,
  - WBC count: 460/ul with lymphocyte predominant (neutrophil 2%, lymphocyte 77%, monocyte 21%)
  - albumin: 2.8g/dL
  - total protein: 4.5g/dL,
  - Glucose: 84mg/dL,
  - LDH: 323U/L,
  - The cytology -> malignant cells, suspected metastatic adenocarcinoma.



a large tumor, 4x5 cm, near the cardiac junction, and an A1 ulcer at the margin of the tumor



(R) poor cellular cohesiveness and signet-ring morphology (arrows) with focal mitotic activity (arrow head).(Hematoxylin and eosin 400 X).  
(L) x *H. pylori* were identified. (Warthin-Starry stains 400 X)

- stage IV
- underwent chemotherapy

Discussion

Thank you