

附圖

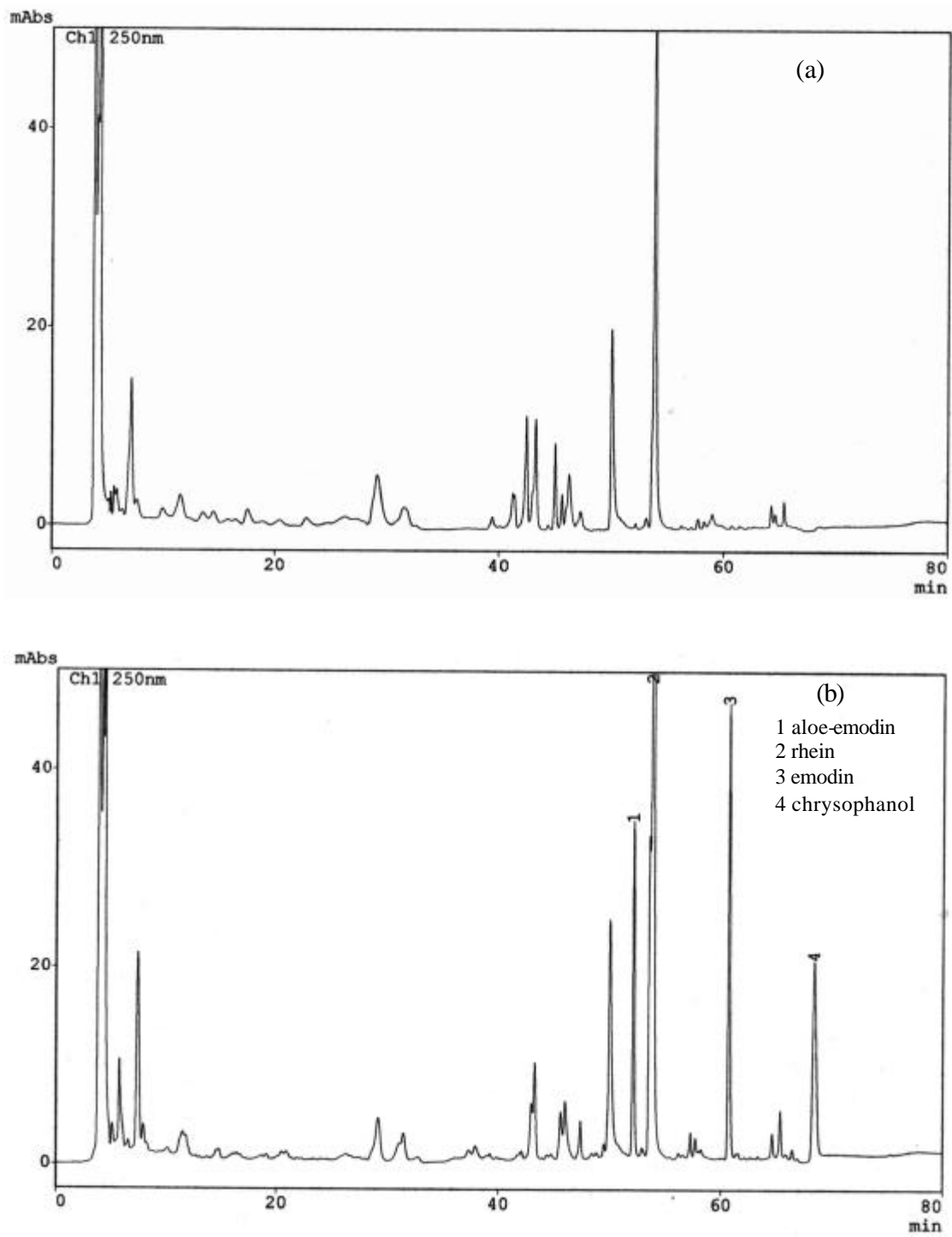


Fig. 5-1 HPLC chromatograms of rat serum after oral administration of decoction of Rhubarb prior to (a) and after (b) enzymolysis.

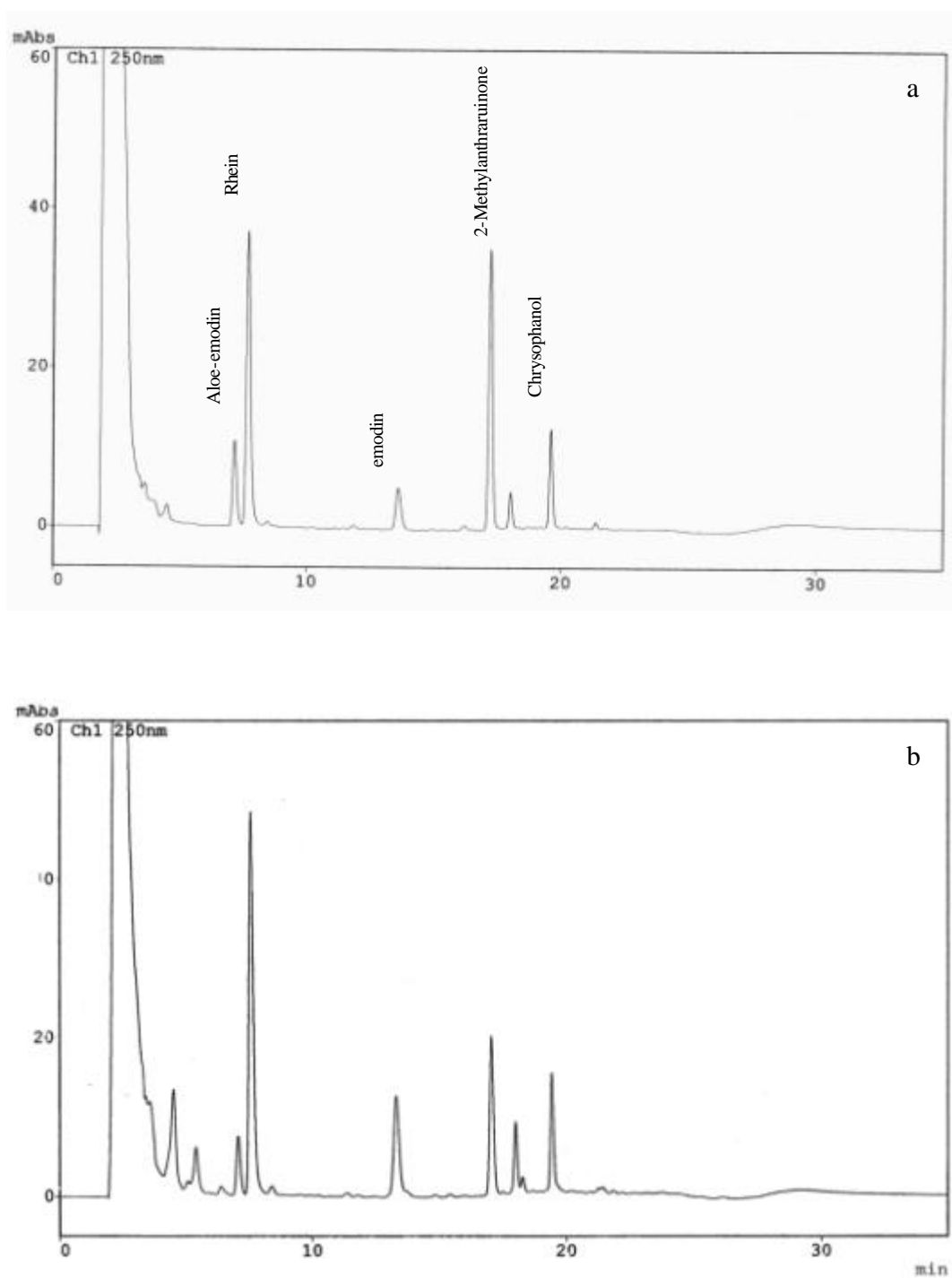


Fig. 5-2. Chromatograms of (a) serum spiked with aloe-emodin, rhein, emodin, chrysophanol and 2-methylanthraquinone (internal standard) and (b) serum sample obtained at 10 minute after oral administration of Rhubarb decoction (5 g/kg).

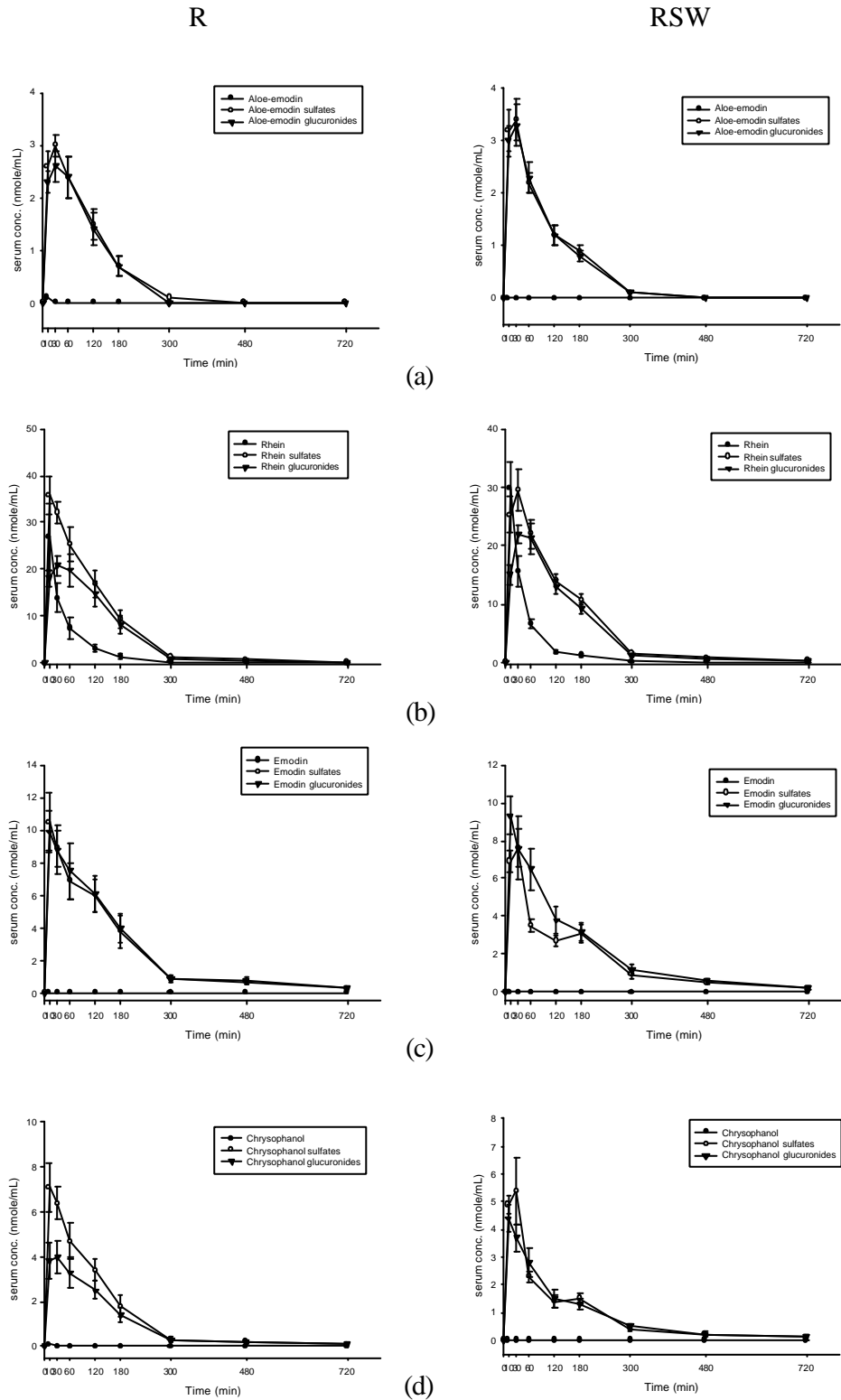


Fig. 5-3 Mean (\pm S.E.) serum concentration-time profiles of (a) aloe-emodin, (b) rhein, (c) emodin, (d) chrysophanol and their conjugate metabolites in six rats after oral administration of decoction of rhubarb (R) or rhubarb steamed with wine (RSW) (5 g/kg).

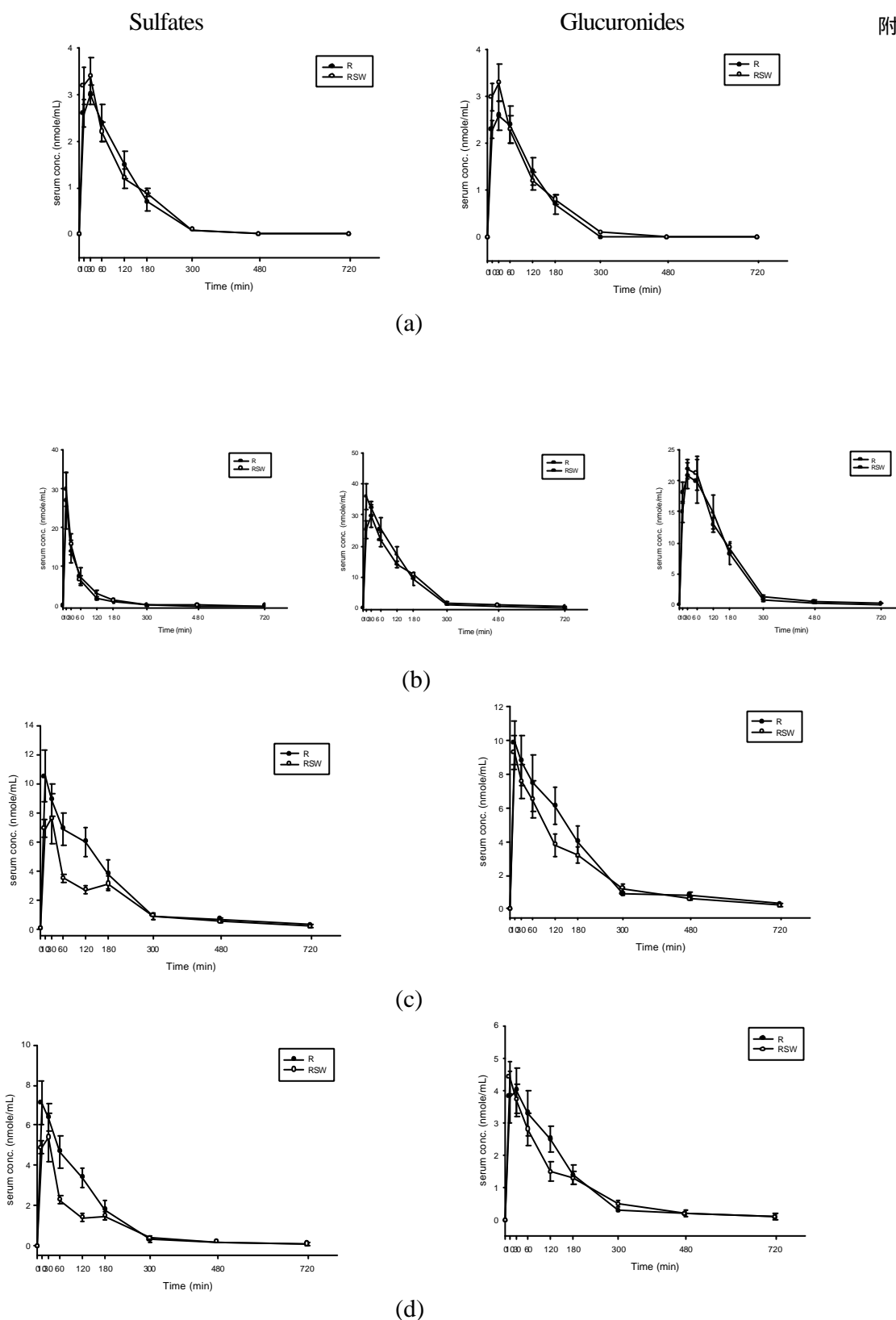


Fig. 5-4 Mean (\pm S.E.) serum concentration-time profiles of (a) aloe-emodin, (b) rhein, (c) emodin, (d) chrysophanol sulfates and glucuronides after oral administration of decoction of rhubarb (R) (●) or rhubarb steamed with wine (RSW) (○) (5 g/kg) in six rats.

附圖

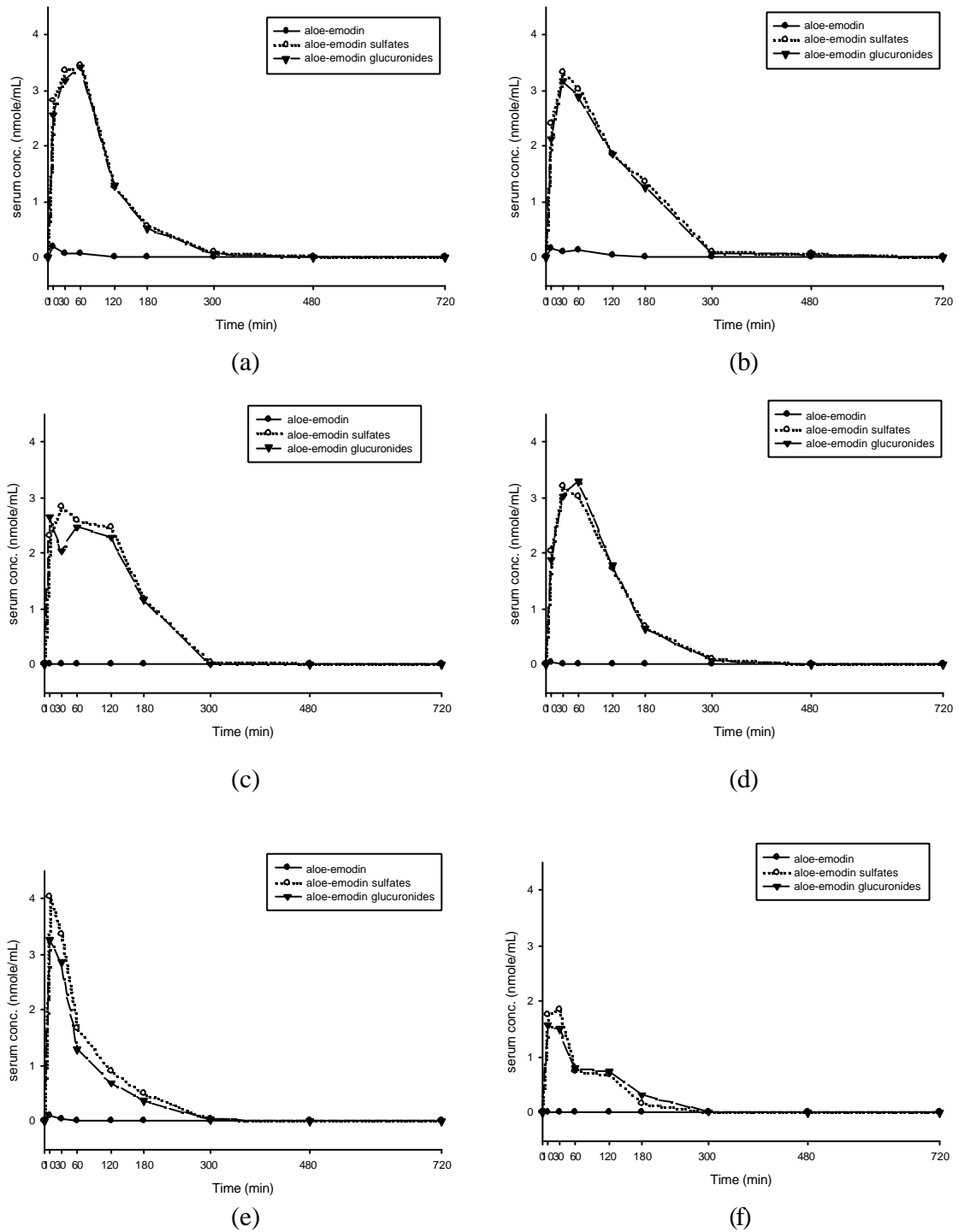


Fig. 5-5 Serum concentration-time profiles of aloe-emodin, aloe-emodin sulfates and aloe-emodin glucuronides after oral administration of decoction of Rhubarb (5g/kg) to (a) rat 1, (b) rat 2, (c) rat 3, (d) rat 4, (e) rat 5 and (f) rat 6.

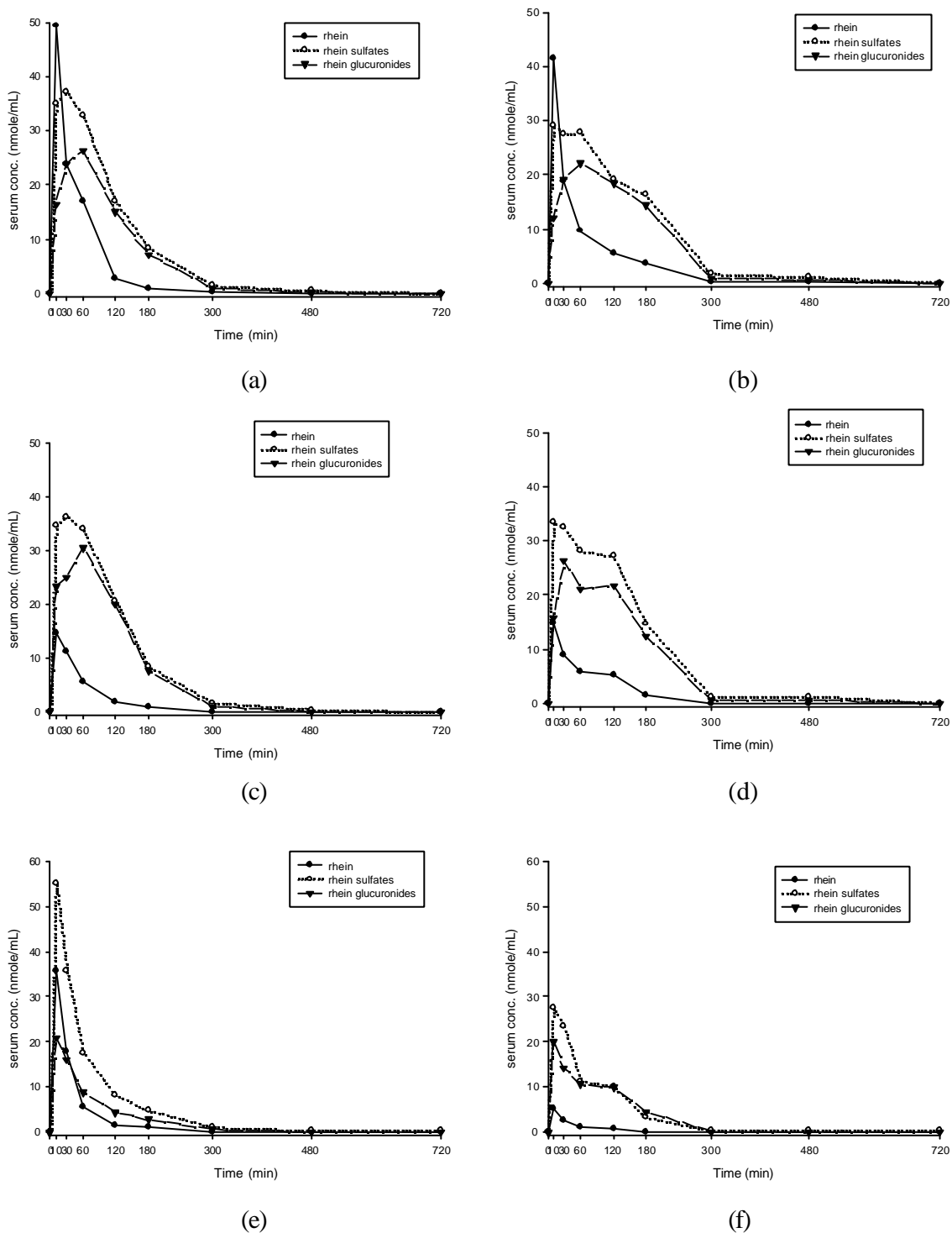


Fig. 5-6 Serum concentration-time profiles of rhein, rhein sulfates and rhein glucuronides after oral administration of decoction of Rhubarb (5g/kg) to (a) rat 1, (b) rat 2, (c) rat 3, (d) rat 4, (e) rat 5 and (f) rat 6.

附圖

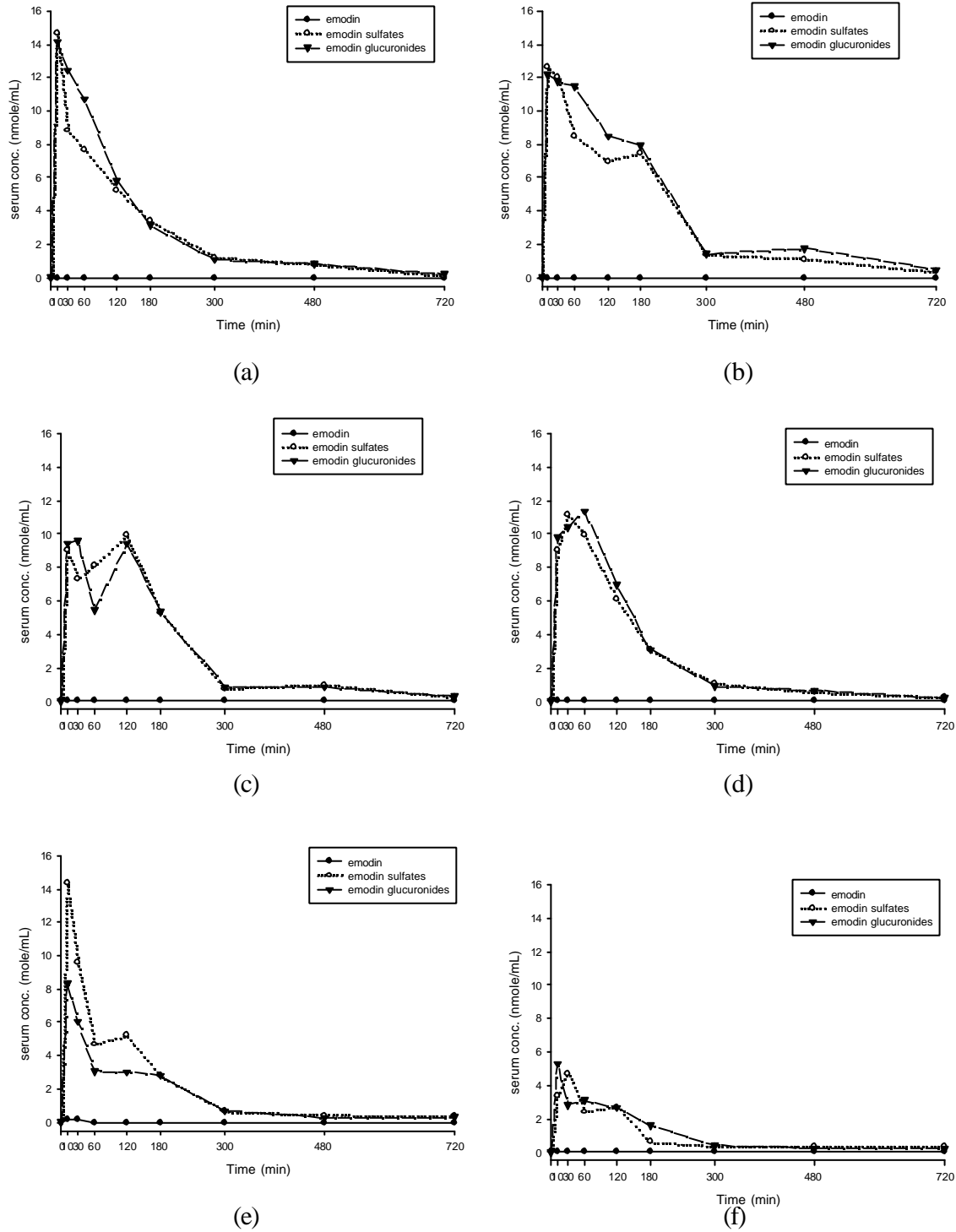


Fig. 5-7 Serum concentration-time profiles of emodin, emodin sulfates and emodin glucuronides after oral administration of decoction of Rhubarb (5g /kg) to (a) rat 1, (b) rat 2, (c) rat 3, (d) rat 4, (e) rat 5 and (f) rat 6.

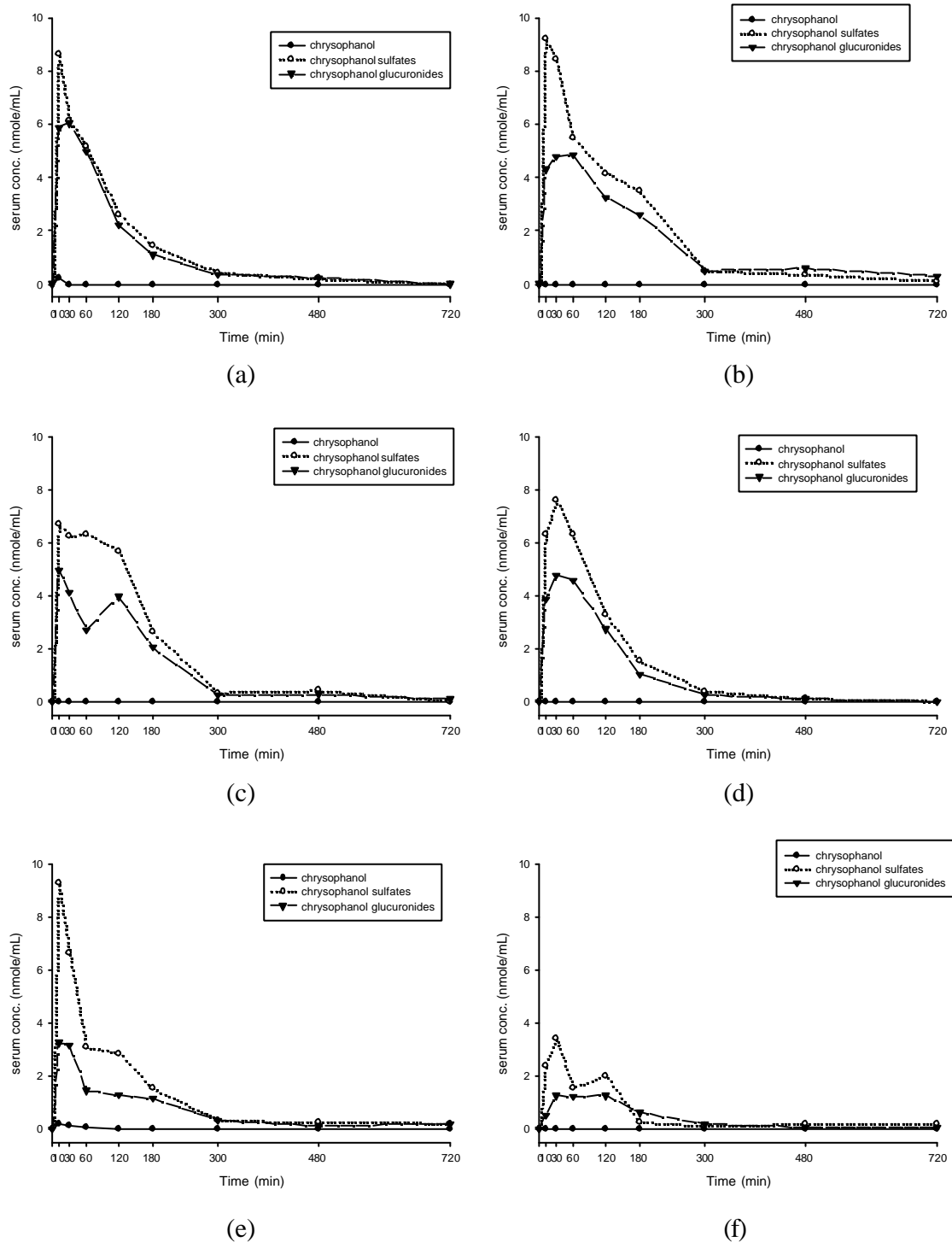


Fig. 5-8 Serum concentration-time profiles of chrysophanol, chrysophanol sulfates and chrysophanol glucuronides after oral administration of decoction of Rhubarb (5g /kg) to (a) rat 1, (b) rat 2, (c) rat 3, (d) rat 4, (e) rat 5 and (f) rat 6.

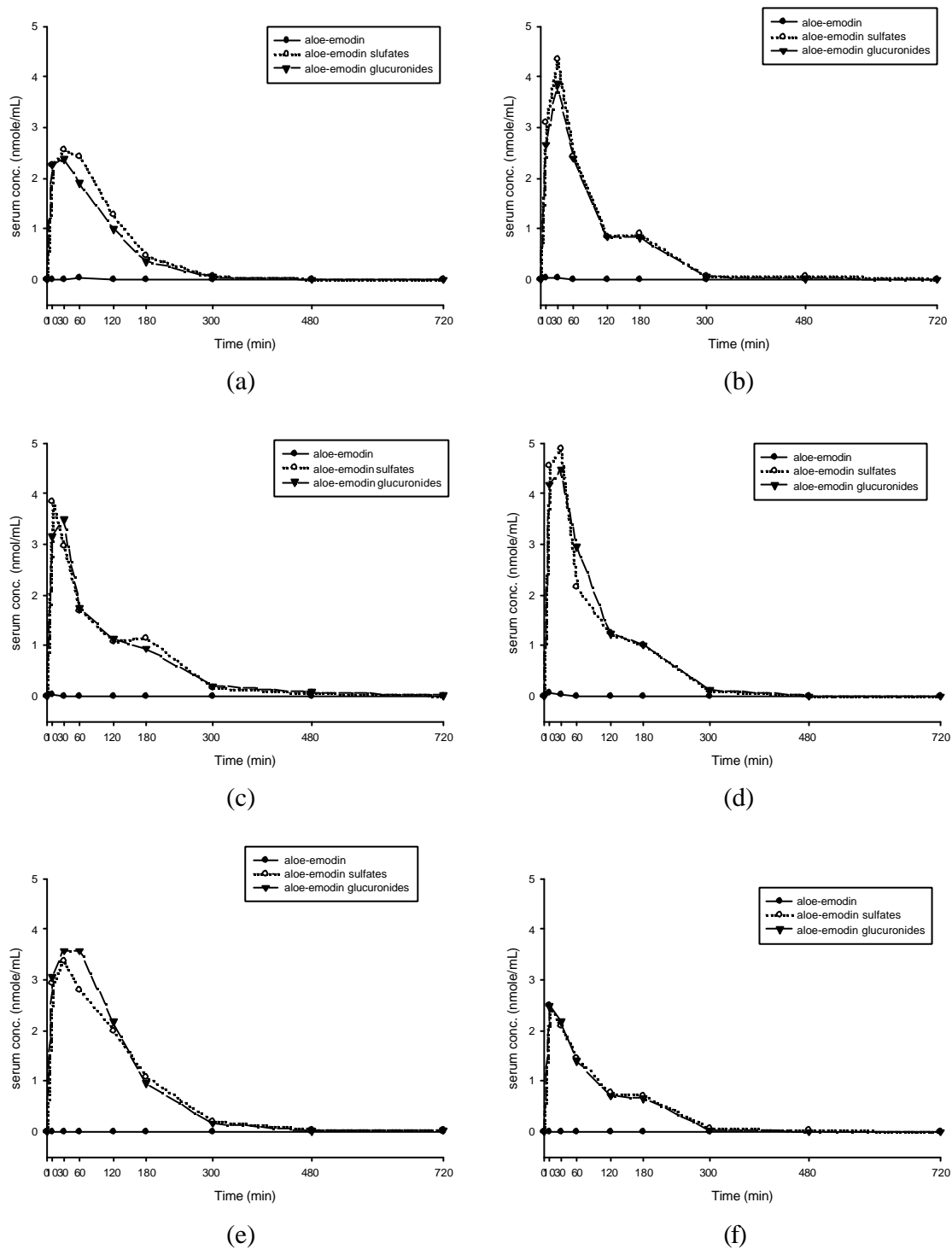


Fig.5-9 Serum concentration-time profiles of aloe-emodin, aloe-emodin sulfates and aloe-emodin glucuronides after oral administration of decoction of Rhubarb steamed with wine (5g /kg) to (a) rat 1, (b) rat 2, (c) rat 3, (d) rat 4, (e) rat 5 and (f) rat 6

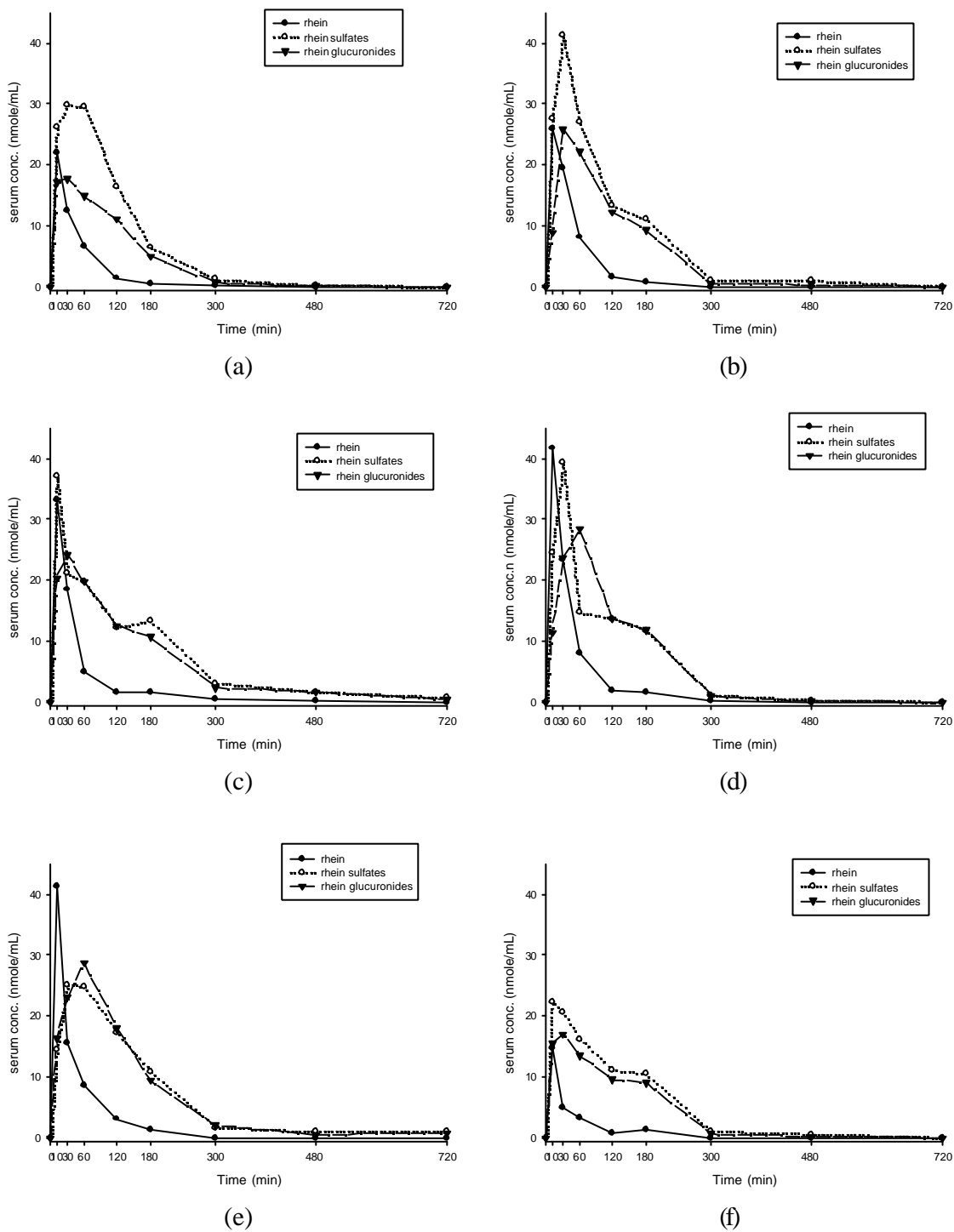


Fig. 5-10 Serum concentration-time profiles of rhein, rhen sulfates and rhen glucuronides after oral administration of decoction of Rhubarb steamed with wine(5g /kg) to (a) rat 1, (b) rat 2, (c) rat 3, (d) rat 4, (e) rat 5 and (f) rat 6.

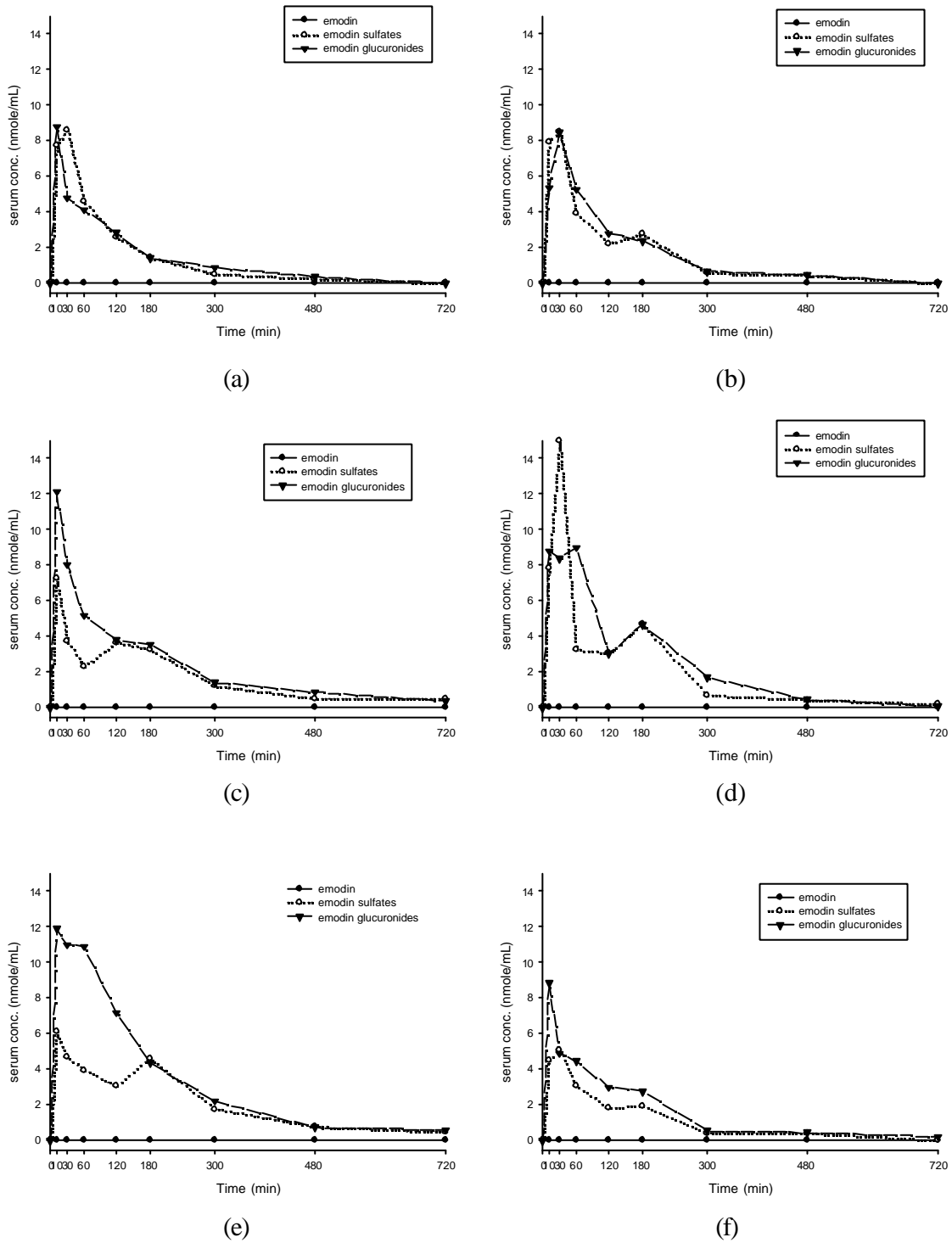


Fig. 5-11 Serum concentration-time profiles of emodin, emodin sulfates and emodin glucuronides after oral administration of decoction of Rhubarb steamed with wine (5g /kg) to (a) rat 1, (b) rat 2, (c) rat 3, (d) rat 4, (e) rat 5 and (f) rat 6.

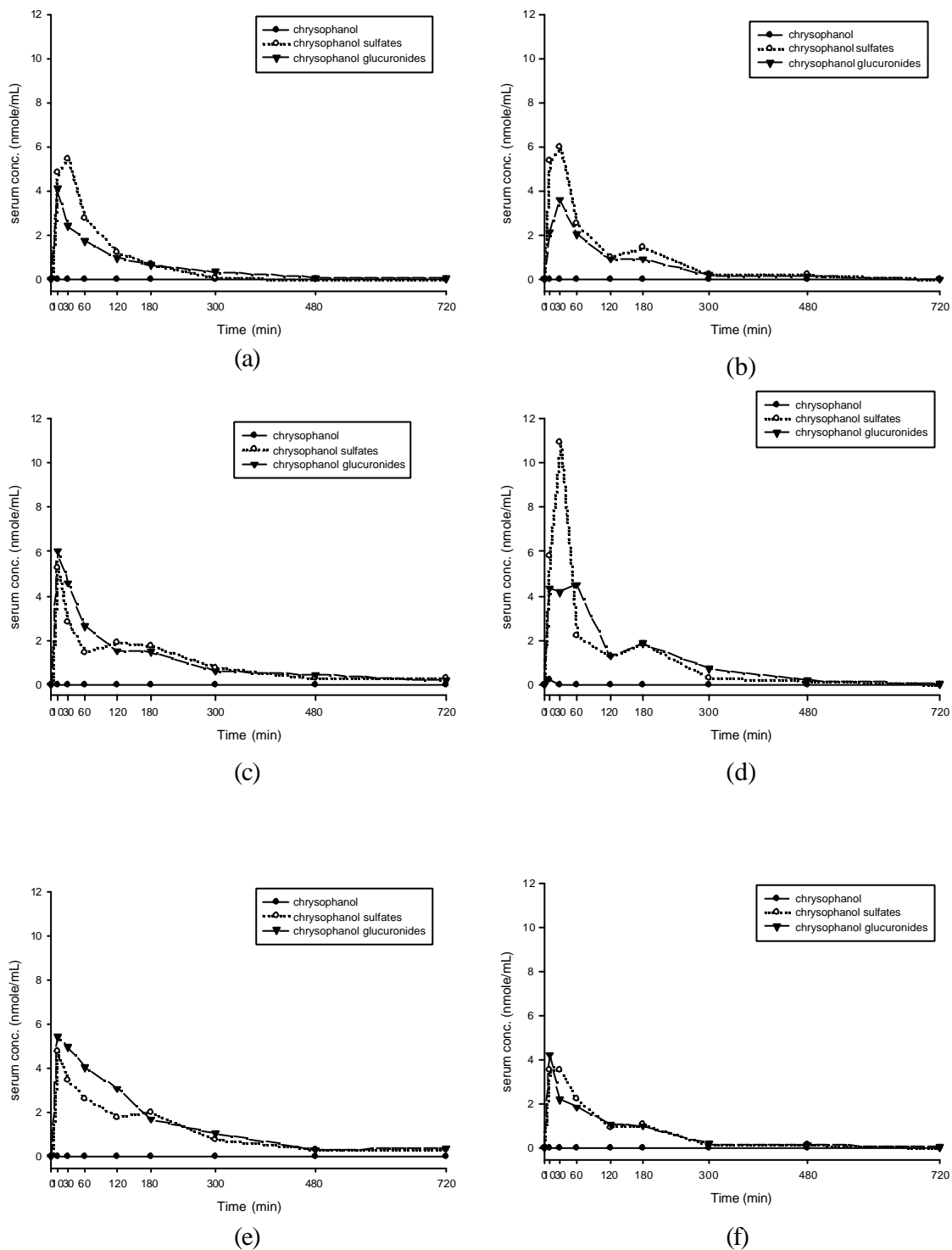


Fig. 5-12 Serum concentration-time profiles of chrysophanol, chrysophanol sulfates and chrysophanol glucuronides after oral administration of decoction of Rhubarb steamed with wine(5g /kg) to (a) rat 1, (b) rat 2, (c) rat 3, (d) rat 4, (e) rat 5 and (f) rat 6.

附圖

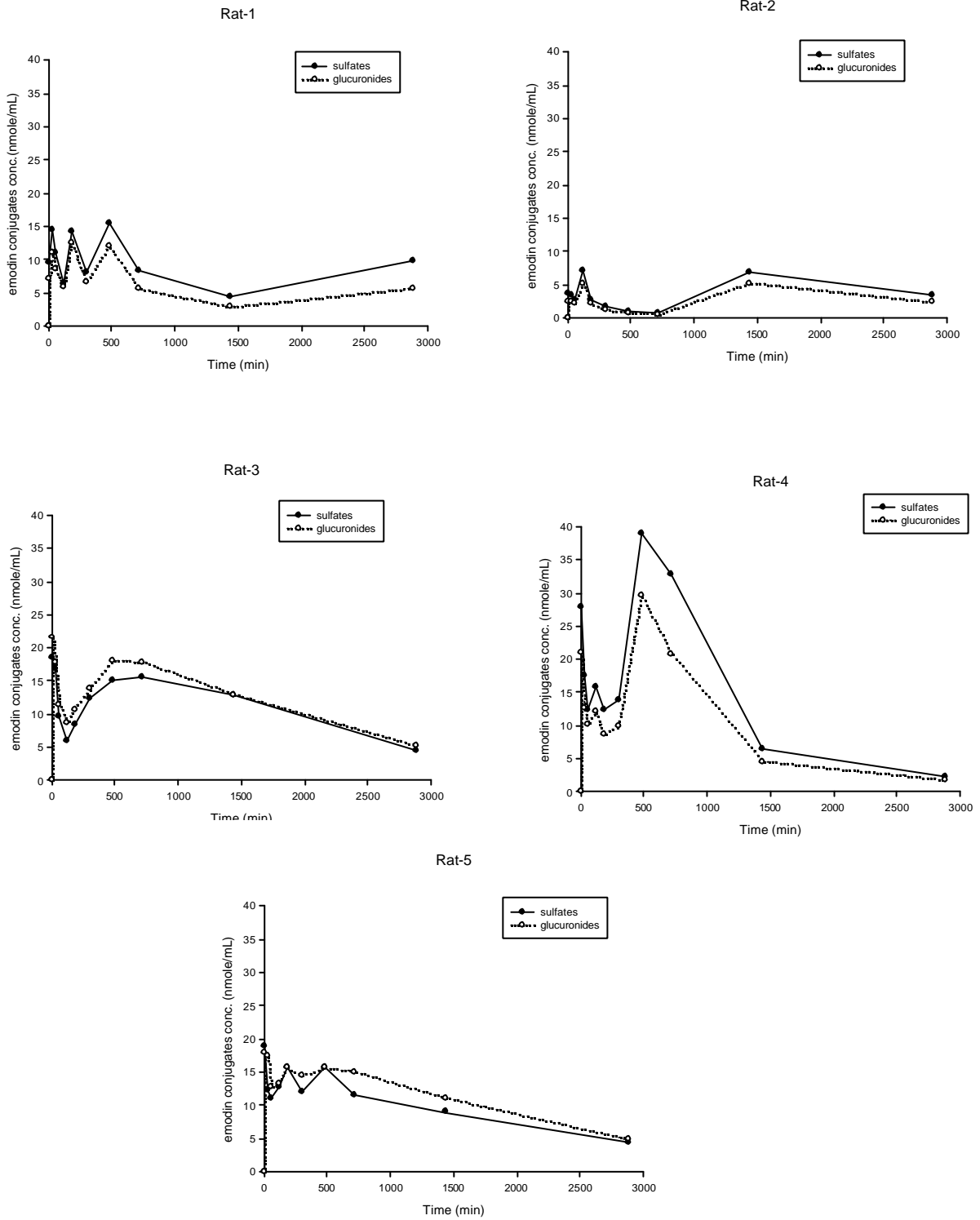


Fig.5-13 Serum concentration-time profiles of emodin sulfates and emodin glucuronides after oral administration of emodin (50 mg /kg) to five rats.

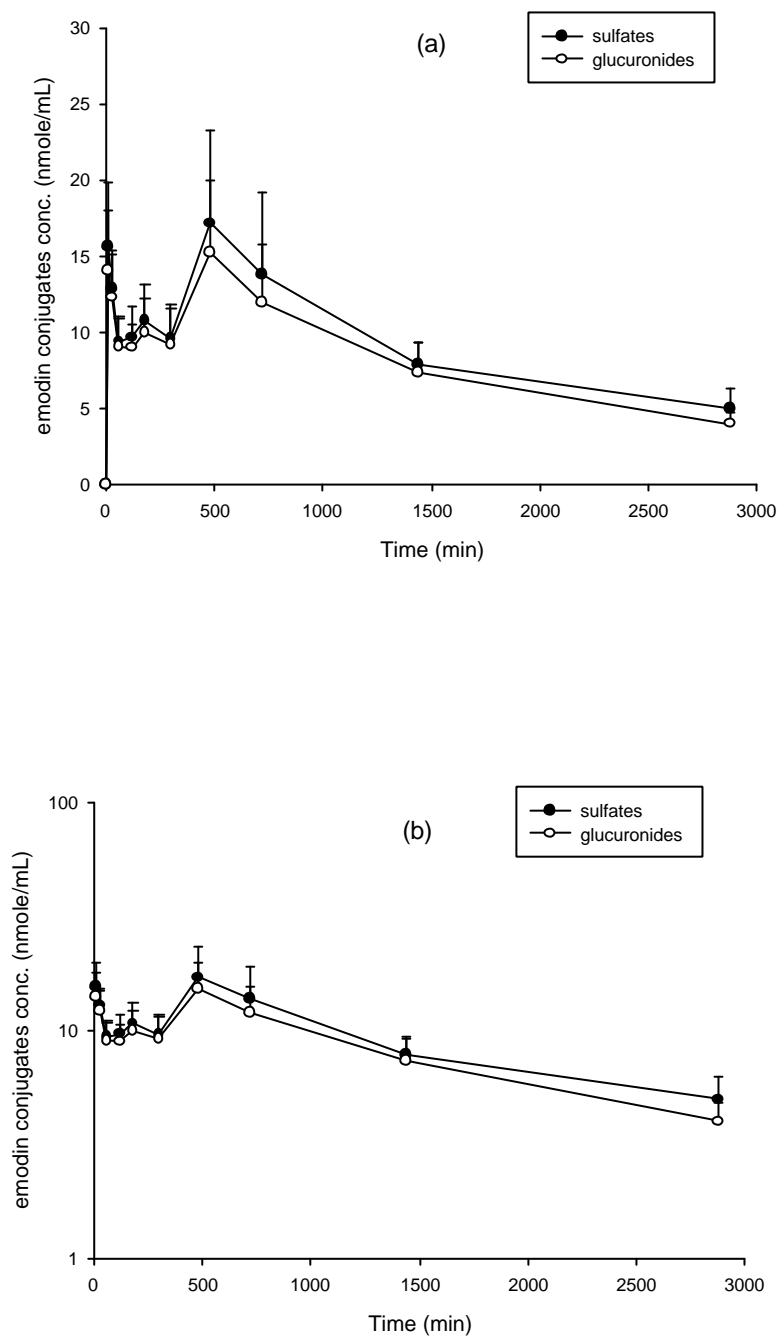


Fig. 5-14 Mean (\pm S.E.) serum concentration-time profiles of (a) emodin sulfates and emodin glucuronides in five rats after oral administration of emodin (50mg/kg) and (b) the semi-log diagram of (a).

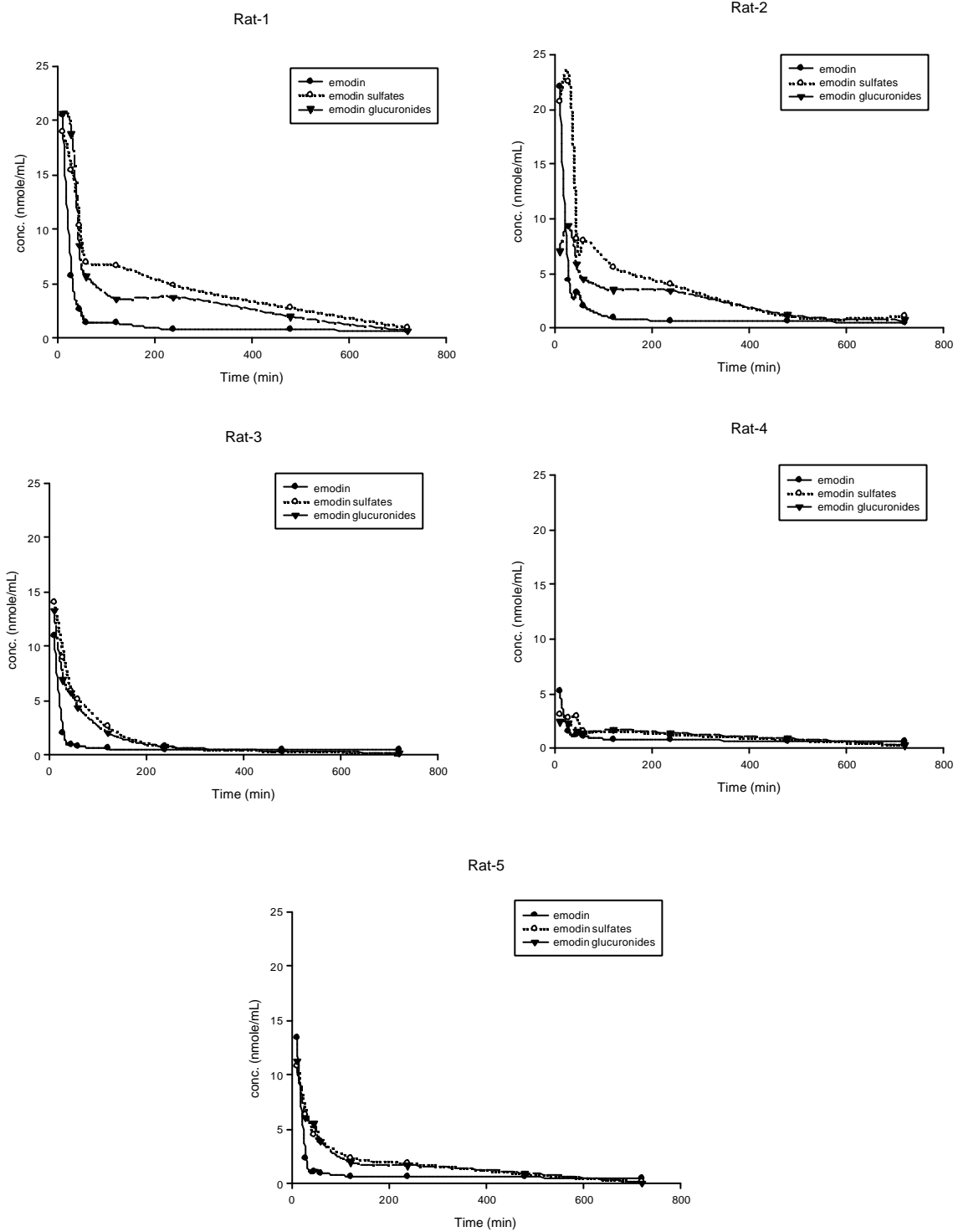


Fig.5-15 Serum concentration-time profiles of emodin, emodin sulfates and emodin glucuronides after intravenous administration of emodin (10 mg/kg) to five rats.

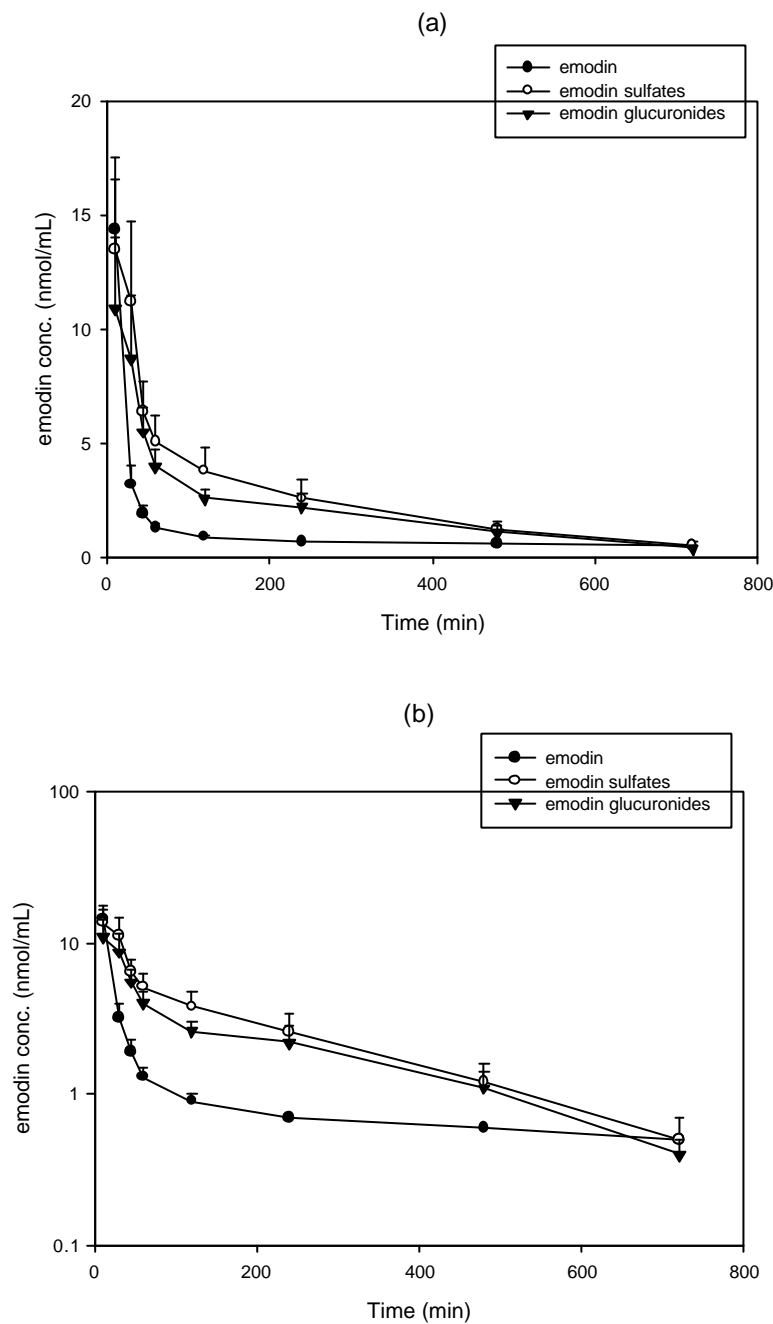


Fig. 5-16 Mean (\pm S.E.) serum concentration-time profiles of (a) emodin, emodin sulfates and emodin glucuronides in five rats after intravenous administration of emodin (10 mg/kg) and (b) the semi-log diagram of (a).