

Fig. 1-1 大黃之組織切片圖

(a) 組織圖

kl: 栓皮層 ca: 簇晶

mr: 髓線 v: 導管

(b) 外觀圖

(c) 藥材圖

(d) 網紋導管

(e) 簇晶

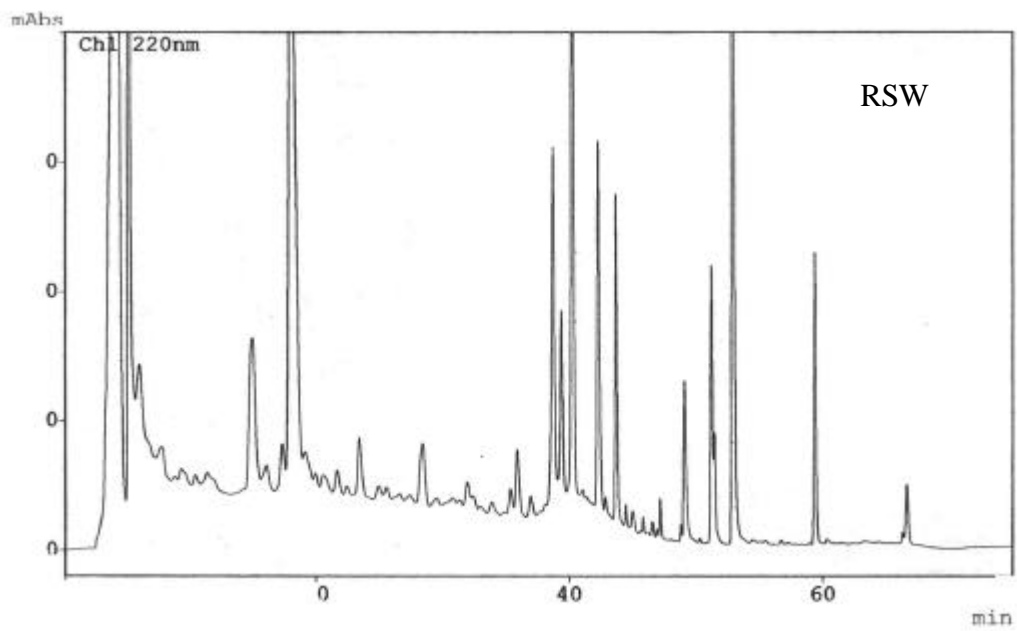
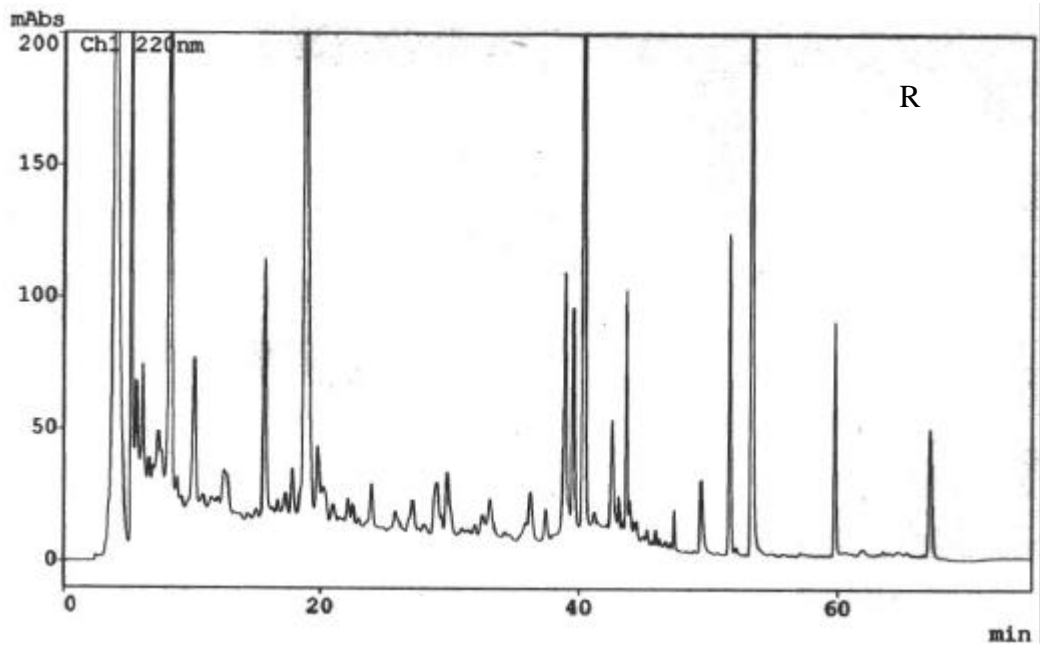


Fig. 3-1 HPLC fingerprint chromatograms of decoctions of Rhubarb (R) and Rhubarb steamed with wine (RSW) (Detection wavelength:220 nm).

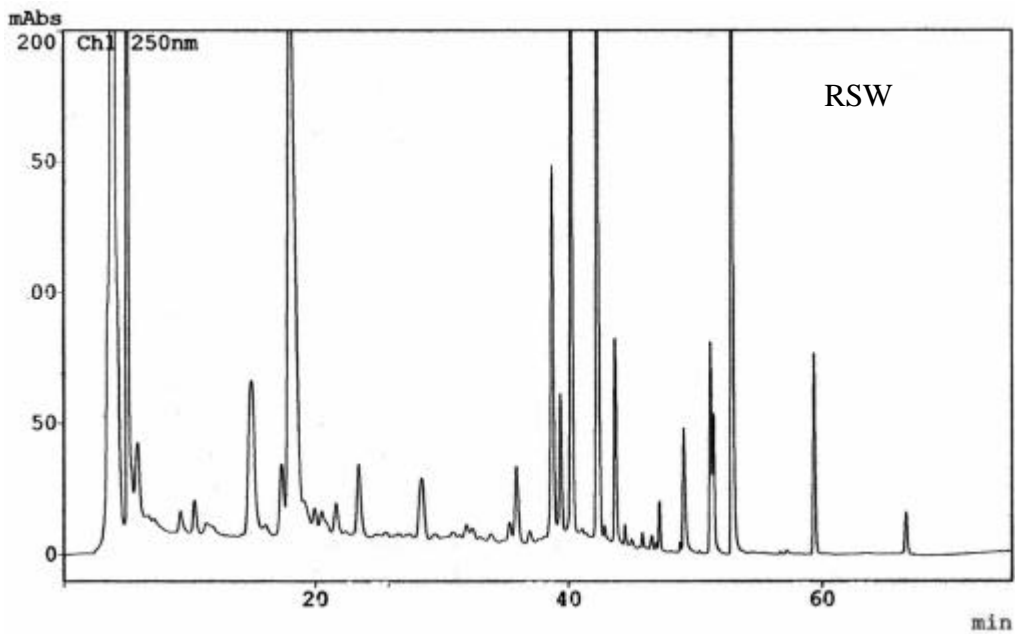
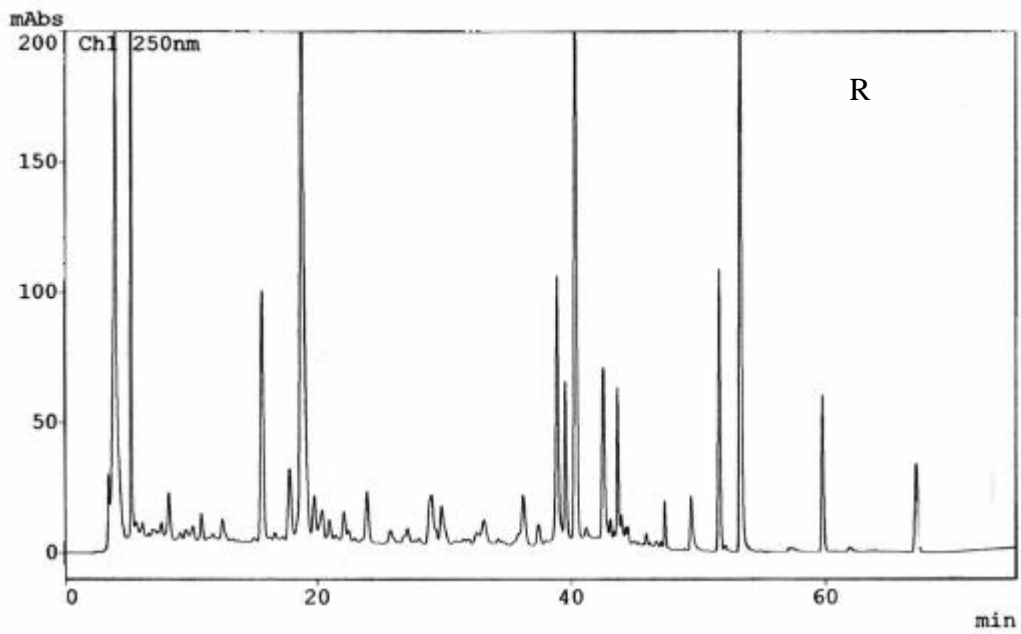


Fig. 3-2 HPLC fingerprint chromatograms of decoctions of Rhubarb (R) and Rhubarb steamed with wine (RSW) (Detection wavelength:250 nm).

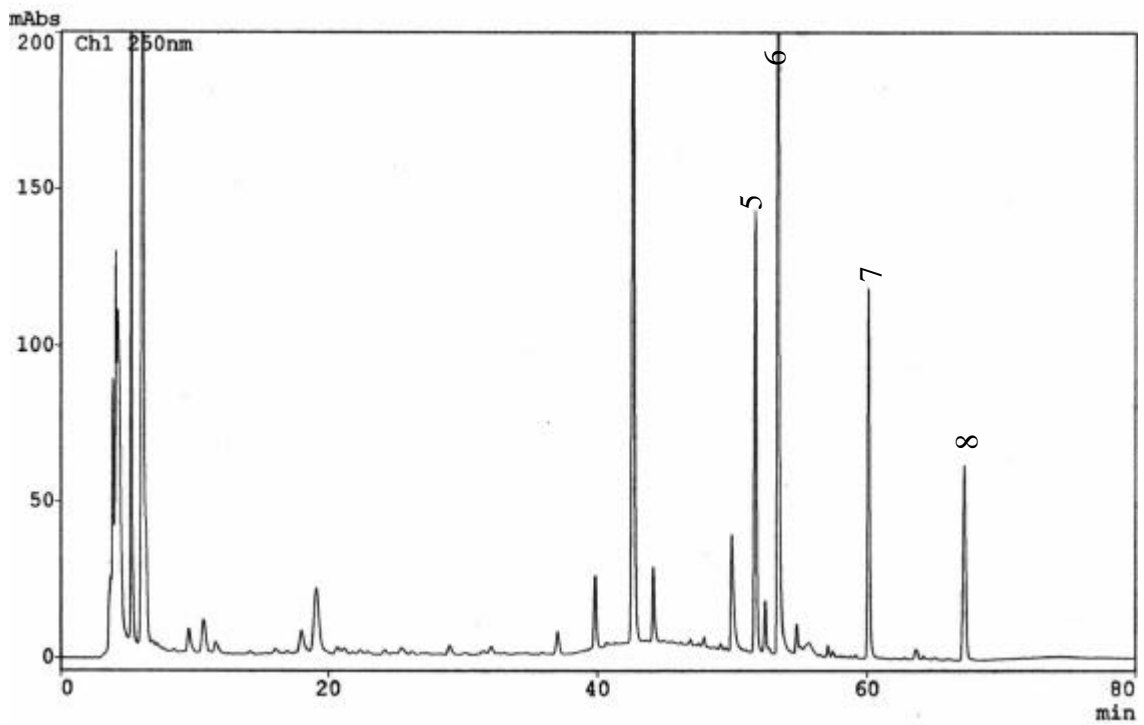
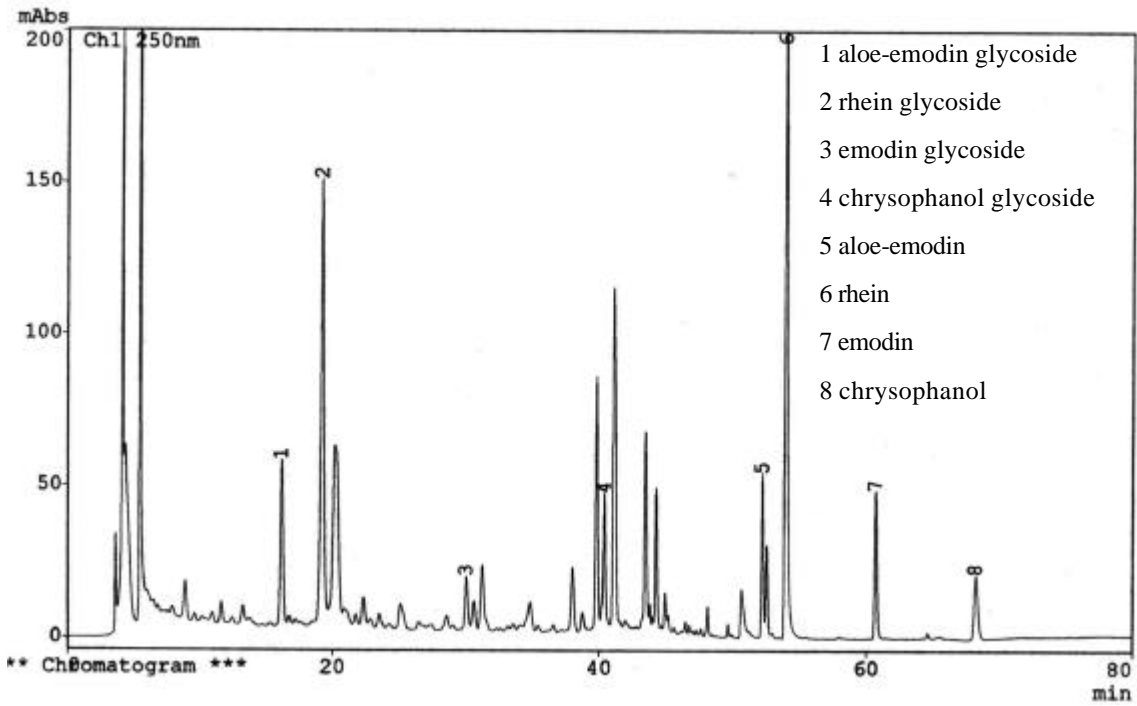


Fig. 3-3 HPLC chromatograms of decoction of Rhubarb prior to (a) and after (b) acid hydrolysis.

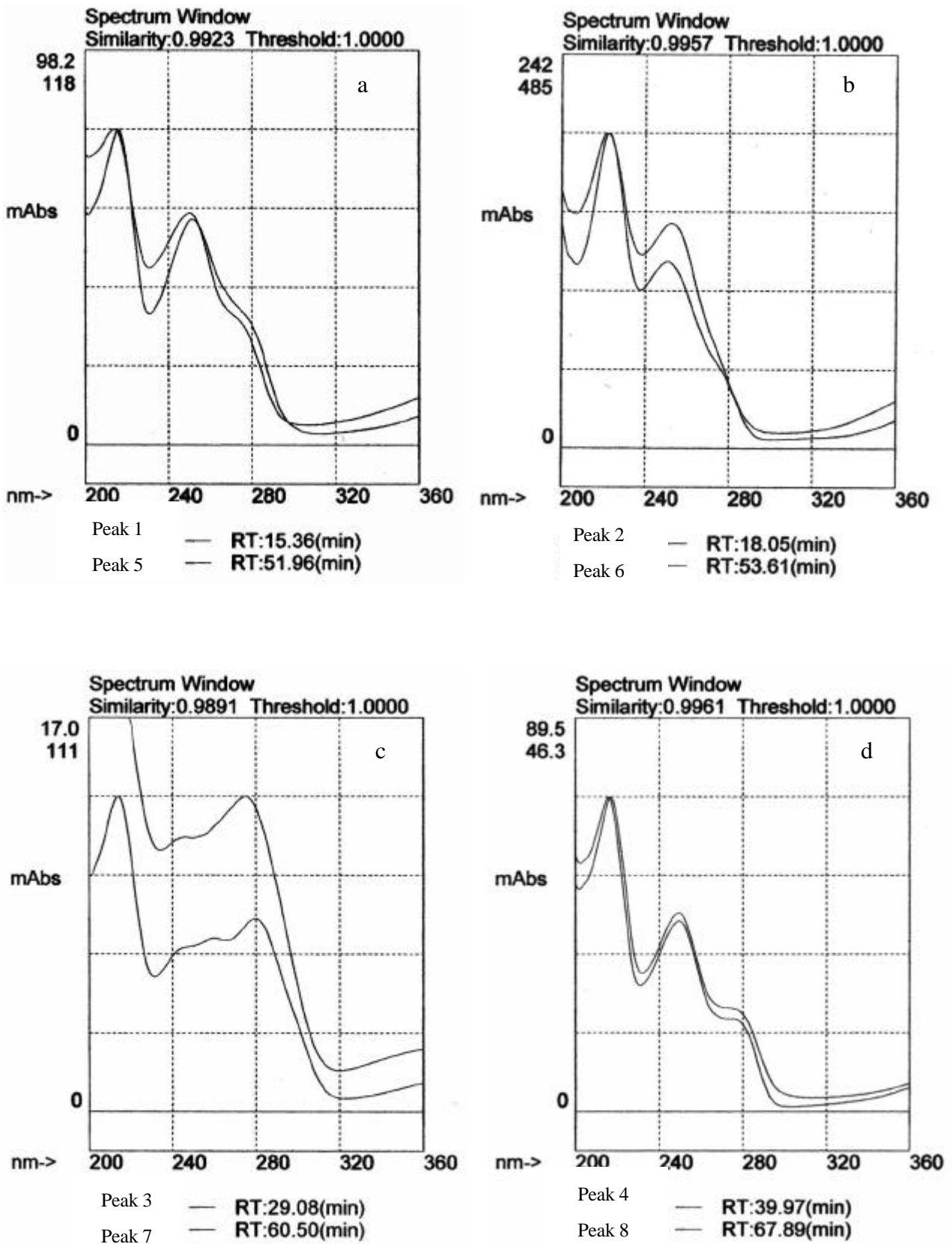


Fig. 3-4 UV spectra of (a) aloë-emodin (b) rhein (c) emodin (d) chrysophanol and their glycosides (peak 1,2,3 and 4) in Rhubarb decoction.

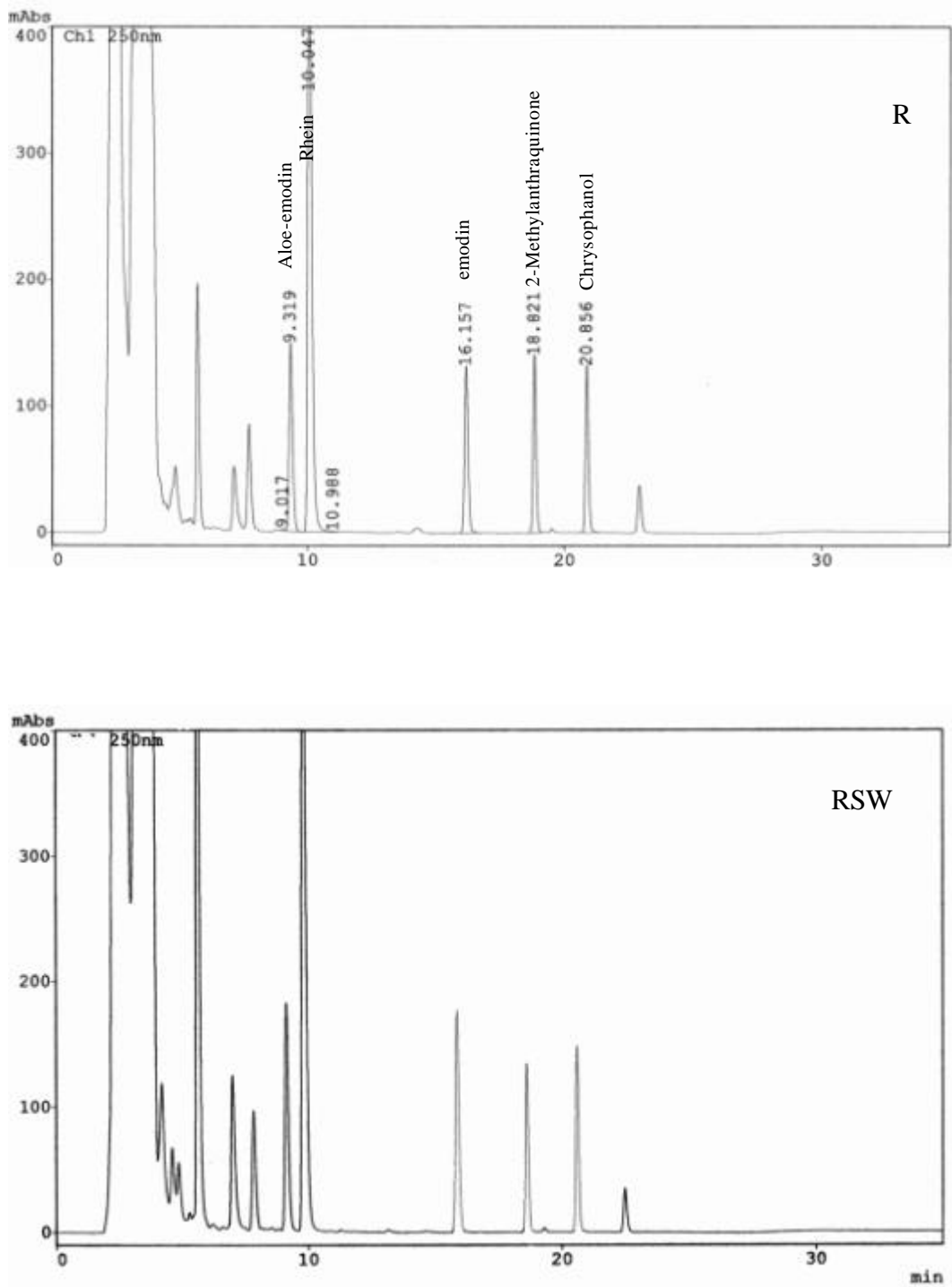


Fig. 4-1 Chromatograms of aloe-emodin, rhein, emodin, chrysophanol and 2-methylanthraquinone (internal standard) in decoctions of R and RSW.(R: Rhubarb; RSW:Rhubarb steamed with wine)

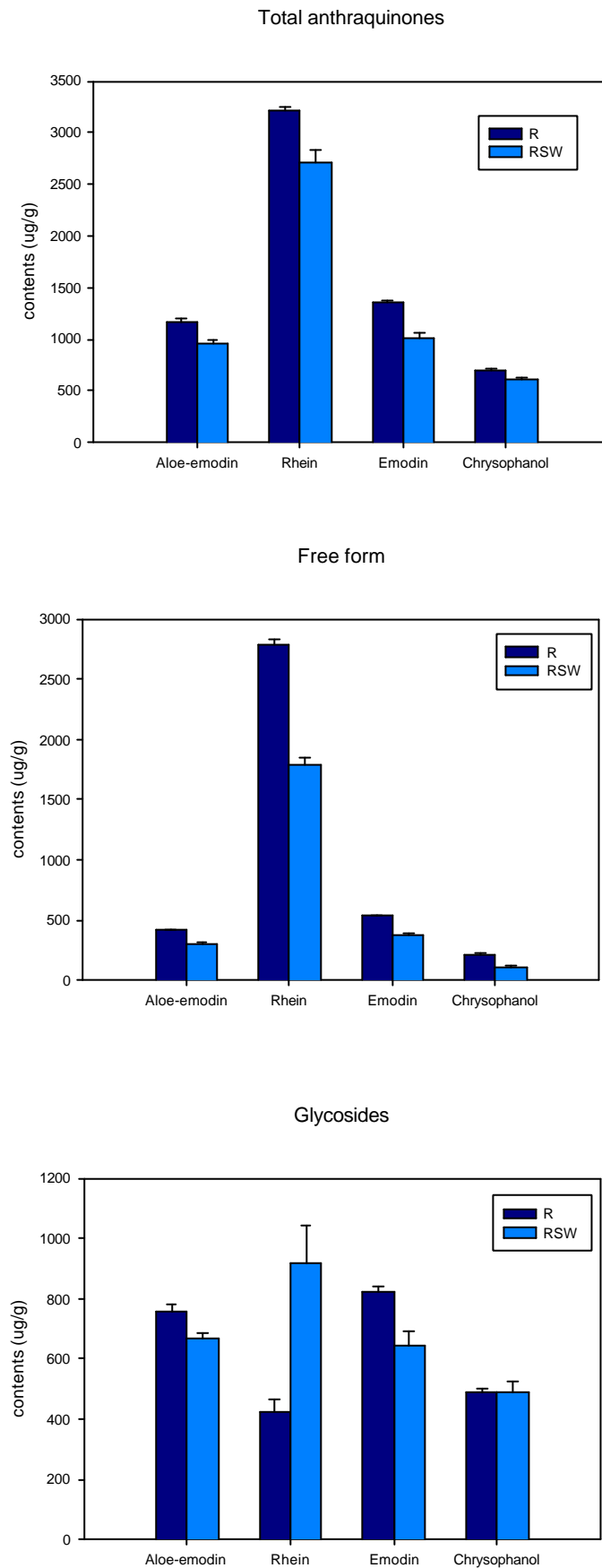


Fig. 4-2 Mean(\pm S.E.) contents($\mu\text{g/g}$) of total anthraquinones, aglycon and glycosides in decoctions of R and RSW.(R: Rhubarb; RSW:Rhubarb steamed with wine)

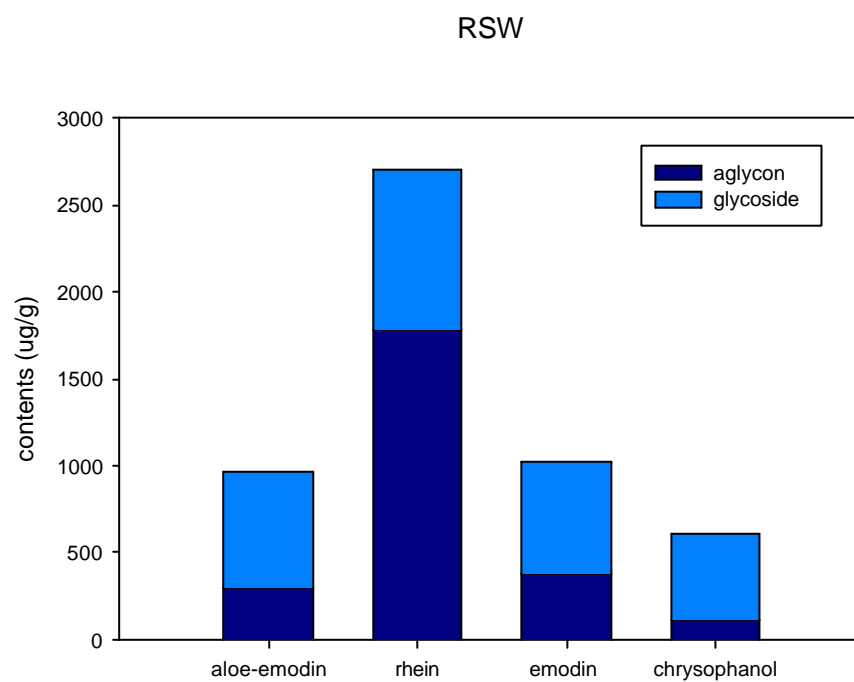
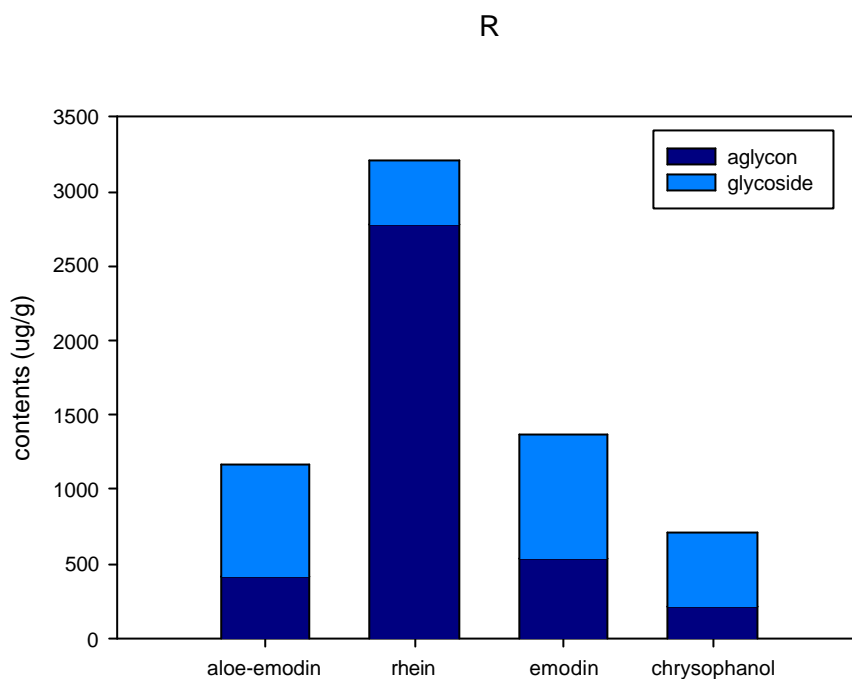


Fig. 4-3 Contents($\mu\text{g/g}$) of aloe-emodin(AE), rhein(RH), emodin(EM), chrysophanol(CH) and their glycosides in decoctions of R and RSW.(R: Rhubarb; RSW:Rhubarb steamed with wine)

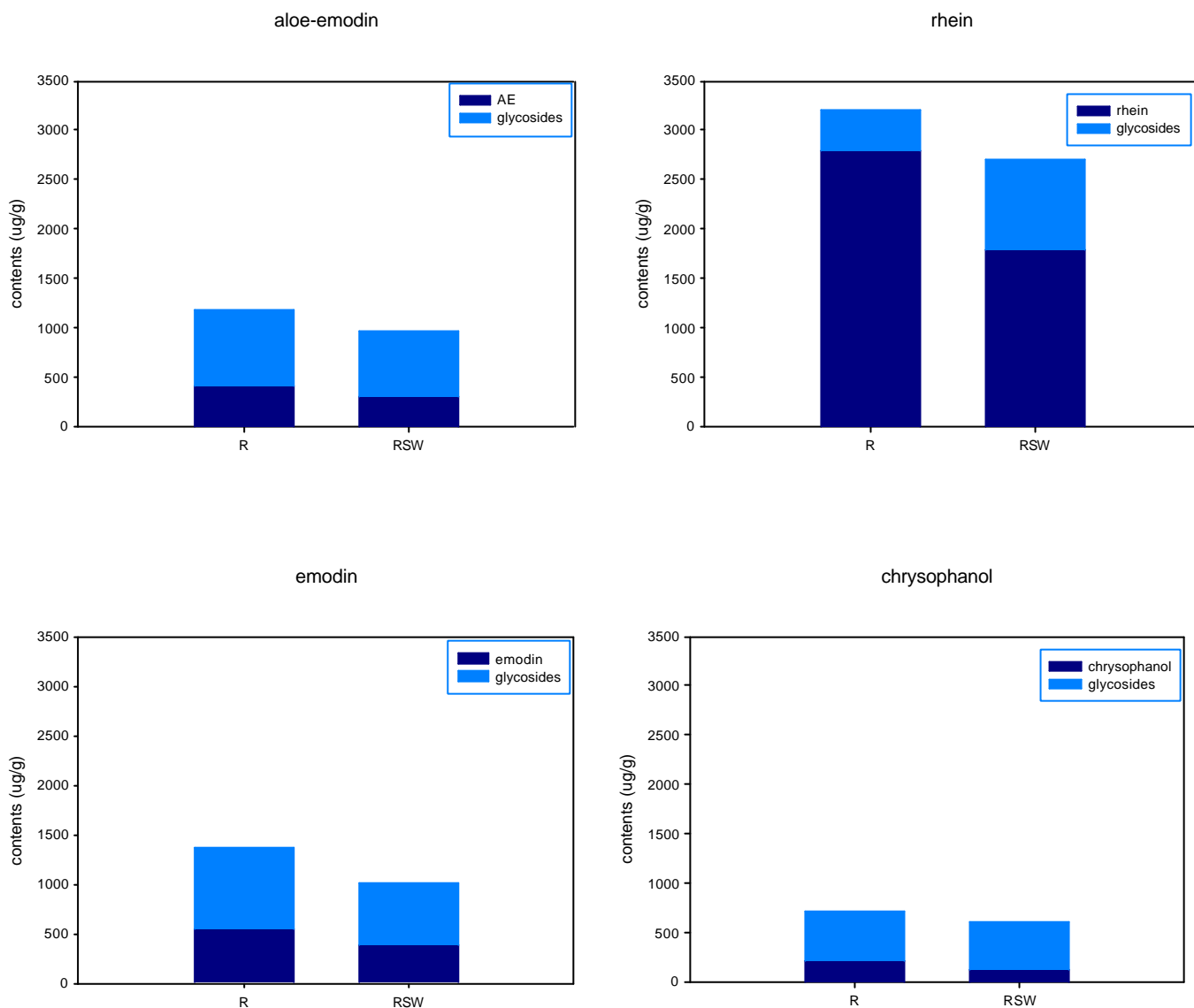


Fig. 4-4 Contents($\mu\text{g/g}$) of aloe-emodin, rhein, emodin, chrysophanol and their glycosides in decoctions of R and RSW (R: Rhubarb; RSW:Rhubarb steamed with wine)