

表 8 受試者口服 Keflex[?] (Eli Lilly, 台灣) 250mg 膠囊劑之血漿中 cephalexin 濃度 (µg/ml)

Time(hr)	A	B	C	D	E	F	G	H	I	J	K	L	Mean	S.D.	C.V.(%)
0.0	0	0	0	0	0	0	0	0	0	0	0	0	0	0	0
0.33	2.327	2.631	0.221	7.460	n.d.	n.d.	0.117	1.589	0.188	n.d.	n.d.	1.663	1.895	3.931	207.49
0.66	5.450	10.494	9.396	13.977	n.d.	11.177	8.336	12.086	7.486	5.255	9.125	14.081	8.362	3.697	44.21
1.0	9.677	6.728	12.084	7.522	2.101	6.216	11.425	9.764	10.150	8.226	7.802	9.764	8.455	2.688	31.80
1.5	7.918	4.714	9.804	6.115	7.843	5.785	9.235	5.660	5.933	6.628	7.454	6.992	7.007	1.513	21.59
2.0	4.732	3.146	7.903	4.158	6.012	5.641	5.190	3.912	3.518	3.887	4.471	3.980	4.713	1.316	27.94
2.5	3.063	1.947	4.307	2.714	4.200	4.337	3.638	2.712	2.525	2.704	2.805	3.164	3.176	0.776	24.43
3.0	2.381	1.516	3.193	2.110	2.830	3.465	2.812	2.022	1.716	1.790	1.639	2.462	2.328	0.639	27.44
4.0	1.679	0.780	1.889	1.635	1.353	1.766	1.622	1.290	1.040	1.108	0.768	1.759	1.391	0.393	28.24
5.0	1.214	0.357	1.182	0.474	0.814	0.866	1.078	0.732	0.379	0.722	0.422	1.408	0.804	0.357	44.40
6.0	0.658	0.102	0.459	0.332	0.547	0.728	0.761	0.317	0.216	0.236	0.113	0.734	0.434	0.247	56.96
8.0	0.164	n.d.	0.198	0.283	0.163	n.d.	0.345	0.116	0.092	n.d.	n.d.	n.d.	0.113	0.120	106.12
10.0	0.094	n.d.	n.d.	0.094	n.d.	n.d.	n.d.	n.d.	n.d.	n.d.	n.d.	n.d.	0.016	0.037	233.55

*n.d. is expressed as not detectable.

表 9 受試者口服 Cephnamycin[?] (永信)250mg 膠囊劑之血漿中 cephalexin 濃度(μg/ml)

Time(hr)	A	B	C	D	E	F	G	H	I	J	K	L	Mean	S.D.	C.V.(%)
0.0	0	0	0	0	0	0	0	0	0	0	0	0	0	0	0
0.33	1.608	3.440	2.445	11.553	0.054	4.041	1.148	2.524	0.502	3.164	2.398	1.642	2.877	2.974	103.39
0.66	5.954	11.559	9.178	14.618	0.389	12.054	6.105	11.323	2.740	8.819	9.736	14.056	8.878	4.367	49.20
1.0	9.779	7.691	11.617	8.544	3.733	9.324	10.245	6.434	10.647	7.587	8.072	9.574	8.604	2.119	24.62
1.5	6.786	5.513	7.439	4.737	8.819	6.545	6.952	5.428	6.627	5.161	5.081	5.151	6.187	1.215	19.64
2.0	5.441	3.369	6.596	2.675	6.328	4.331	4.304	4.432	4.988	3.588	2.804	3.171	4.336	1.303	30.06
2.5	3.733	2.321	4.974	2.175	5.971	2.954	3.021	2.916	3.288	2.554	1.898	2.371	3.181	1.203	37.80
3.0	3.296	1.916	4.627	1.414	3.927	2.154	2.060	1.843	2.143	1.999	1.400	1.231	2.334	1.059	45.35
4.0	1.601	1.294	2.812	0.889	2.039	1.250	1.276	0.818	1.330	1.147	0.543	0.961	1.330	0.605	45.50
5.0	1.026	0.718	1.535	0.525	1.072	0.717	0.817	0.515	0.684	0.499	0.350	0.407	0.739	0.337	45.67
6.0	0.512	0.481	0.964	0.298	0.662	0.262	0.367	0.144	0.482	0.221	0.086	0.094	0.381	0.257	67.54
8.0	0.109	0.194	0.111	0.148	0.228	0.139	0.133	n.d.	0.052	0.092	n.d.	0.087	0.108	0.069	63.90
10.0	0.067	n.d.	0.090	n.d.	n.d.	0.095	n.d.	n.d.	n.d.	0.051	n.d.	n.d.	0.025	0.039	153.68

*n.d. is expressed as not detectable.

表 10 口服不同 cephalexin 膠囊劑之平均血漿中濃度 ($\mu\text{g/ml}$)

Time (hr)	Keflex ($\mu\text{g/ml}$)	Cephanmycin ($\mu\text{g/ml}$)
0.0	0	0
0.33	1.895 \pm 3.931	2.877 \pm 2.974
0.66	8.362 \pm 3.697	8.878 \pm 4.367
1.0	8.455 \pm 2.688	8.604 \pm 2.119
1.5	7.007 \pm 1.513	6.187 \pm 1.215
2.0	4.713 \pm 1.316	4.336 \pm 1.303
2.5	3.176 \pm 0.776	3.181 \pm 1.203
3.0	2.328 \pm 0.639	2.334 \pm 1.059
4.0	1.391 \pm 0.393	1.330 \pm 0.605
5.0	0.804 \pm 0.357	0.739 \pm 0.337
6.0	0.434 \pm 0.247	0.381 \pm 0.257
8.0	0.113 \pm 0.120	0.108 \pm 0.069
10.0	0.016 \pm 0.037	0.025 \pm 0.039

表 11 受試者口服 Keflex[?] (Eli Lilly, 台灣) 膠囊劑後於血漿中之藥物動力學參數

Subject	AUC ₀₋₁₀ (µg hr/ml)	AUC ₀₋ (µg hr/ml)	Cl/F (L/hr)	K (hr ⁻¹)	T _{1/2} (hr)	V _{Dss} /F (L)	MRT (hr)	T _{max} (hr)	C _{max} (µg/ml)
A	20.6023	20.7829	12.0291	0.5203	1.3321	23.1175	2.3129	1.00	9.6770
B	14.4380	14.5644	17.1652	0.8070	0.8589	21.2696	1.6048	0.66	10.4940
C	25.6551	25.9798	9.6395	0.6097	1.1368	15.8092	2.1119	1.00	12.0840
D	21.6463	21.8384	11.4477	0.4894	1.4163	23.3913	1.9085	0.66	13.9770
E	15.1829	15.4559	16.1750	0.5970	1.1610	27.1258	2.6413	1.50	7.8430
F	19.8313	21.1520	11.8192	0.5512	1.2575	21.4425	2.1107	0.66	11.1770
G	22.9567	23.8536	10.4806	0.3846	1.8021	27.2444	2.2273	1.00	11.4250
H	18.9461	19.1414	13.0607	0.5939	1.1672	21.9924	1.8813	0.66	12.0860
I	15.9429	16.1405	15.4890	0.4655	1.4892	33.2765	1.8603	1.00	10.1500
J	15.1153	15.4646	16.1660	0.6758	1.0257	23.9208	1.9604	1.00	8.2260
K	16.1821	16.3102	15.3278	0.8817	0.7861	17.3607	1.7348	0.66	9.1250
L	21.8153	23.6859	10.4694	0.3924	1.7665	26.8985	1.9432	0.66	14.0810
Mean	19.0262	19.5308	13.2724	0.5807	1.2666	23.5708	2.0248	0.8717	10.8621
S.D.	3.6418	3.8950	2.6452	0.1514	0.3171	4.6991	0.2782	0.2604	2.0136
C.V.	19.1408	19.9430	19.9304	26.0733	25.0344	19.9359	13.7412	29.8753	18.5377

表 12 受試者口服 Cepharmycin[?] (永信)膠囊劑後於血漿中之藥物動力學參數

Subject	AUC ₀₋₁₀ (µg hr/ml)	AUC ₀₋ (µg hr/ml)	Cl/F (L/hr)	K (hr ⁻¹)	T _{1/2} (hr)	V _{Dss} /F (L)	MRT (hr)	T _{max} (hr)	C _{max} (µg/ml)
A	20.7644	20.8800	11.9732	0.5798	1.1955	20.6500	2.2523	1.00	9.7790
B	18.2037	18.6459	13.4078	0.4387	1.5798	30.5593	1.9514	0.66	11.5590
C	27.8404	27.9981	8.9292	0.5708	1.2144	15.6446	2.3798	1.00	11.6170
D	20.1610	20.4826	12.2055	0.4601	1.5064	26.5594	1.5006	0.66	14.6180
E	19.5522	19.9921	12.5050	0.5184	1.3371	24.1220	2.6697	1.50	8.8190
F	20.5512	20.7237	12.0635	0.5509	1.2583	21.9812	1.8937	0.66	12.0540
G	18.1869	18.4189	13.5730	0.5734	1.2088	23.6781	2.0489	1.00	10.2450
H	16.5037	16.6930	14.9284	0.7604	0.9116	19.6958	1.6999	0.66	11.3230
I	17.4031	17.4769	14.3046	0.7037	0.9850	20.2919	2.1557	1.00	10.6470
J	16.5483	16.6352	15.0284	0.5867	1.1815	25.6636	1.9146	0.66	8.8190
K	14.3206	14.4217	17.3350	0.8509	0.8146	20.3397	1.5447	0.66	9.7360
L	17.1375	17.2565	14.4873	0.7306	0.9488	19.8299	1.6045	0.66	14.0560
Mean	18.9311	19.1354	13.3951	0.6104	1.1785	22.4180	1.9680	0.8433	11.1060
S.D.	3.3941	3.4130	2.1007	0.1250	0.2329	3.9382	0.3561	0.2637	1.8464
C.V.	17.9289	17.8359	15.6823	20.4872	19.7591	17.5670	18.0946	31.2637	16.6249

表 13 口服不同 cephalexin 膠囊劑之平均藥物動力學參數

Parameter	Keflex(Lilly) Mean±S.D.	Cephanmycin(永信) Mean±S.D.	Statistic P > 0.05
AUC ₀₋₁₀ (µg hr/ml)	19.0262±3.6418	18.9311±3.3941	N.S.
AUC _{0∞} (µg hr/ml)	19.5308±3.8950	19.1354±3.4130	N.S.
Cl/F(L/hr)	13.2724±2.6452	13.3951±2.1007	
K(hr ⁻¹)	0.5807±0.1514	0.6104±0.1250	
T _{1/2} (hr)	1.2666±0.3171	1.1785±0.2329	
V _{Dss} /F(L)	23.5708±4.6991	22.4180±3.9382	
MRT(hr)	2.0248±0.2782	1.9680±0.3561	N.S.
T _{max} (hr)	0.8717±0.2604	0.8433±0.2637	
C _{max} (µg/ml)	10.8621±2.0136	11.106±1.8464	N.S.

表 14 藥物動力學參數 ANOVA 統計分析

Parameters	F	90%C.I.	Power	P-value
C_{max} ($\mu\text{g/ml}$)	1.48	98.90~105.59	1.0000	0.0000
T_{max} (hr)	1.00	90.86~102.54	0.9986	0.0002
MRT (hr)	0.58	90.49~103.90	0.9951	0.0004
AUC_{last} ($\mu\text{g hr/ml}$)	0.01	91.13~107.87	0.9691	0.0003
AUC_{inf} ($\mu\text{g hr/ml}$)	0.17	89.04~106.91	0.9515	0.0016

表 15 尿液中 cephalexin 濃度 ($\mu\text{g/ml}$)

受試者 編號	Keflex Time (hr)					
	0-1	1-2	2-4	4-6	6-8	8-10
A	1586.70	2408.99	3000.00	935.77	93.26	11.
B	152.78	475.64	74.93	53.83	13.24	5.83
C	774.63	4436.00	2009.02	629.74	62.89	30.24
D	1326.50	666.21	56.71	153.63	27.08	17.45
E	187.98	995.58	641.18	181.97	19.47	9.12
F	2883.27	3108.66	641.72	359.99	41.57	37.93
G	1234.78	2522.01	587.81	361.68	240.64	36.95
H	393.08	948.35	253.37	107.37	25.41	25.16
I	404.80	1829.08	453.79	93.37	2.89	2.86
J	347.02	2783.31	505.58	14.97	n.d.	n.d.
K	30.99	419.05	270.96	76.54	6.63	3.25
L	542.81	2462.72	371.65	93.89	10.58	2.92

受試者 編號	Cephanmycin Time (hr)					
	0-1	1-2	2-4	4-6	6-8	8-10
A	319.17	4071.23	1290.28	194.19	75.59	21.07
B	142.73	217.39	145.64	59.25	6.42	2.82
C	1503.24	4446.70	887.27	56.36	38.74	51.79
D	3651.87	1540.40	142.70	103.26	1.67	8.37
E	185.87	2536.40	1052.51	136.22	34.11	6.81
F	560.77	889.77	247.79	47.52	43.60	8.95
G	555.83	1260.70	806.32	361.68	211.20	32.42
H	339.56	1314.34	209.80	87.08	37.60	19.49
I	1382.55	3661.11	822.02	77.02	22.22	4.18
J	1444.65	846.02	187.01	12.51	n.d.	n.d.
K	50.60	577.06	96.72	83.30	14.50	5.41
L	240.84	867.88	138.93	92.42	19.35	1.73

表 16 尿液體積 (ml)

受試者 編號	Keflex Time (hr)						Cephanmycin Time (hr)					
	0-1	1-2	2-4	4-6	6-8	8-10	0-1	1-2	2-4	4-6	6-8	8-10
A	50	10	10	90	160	270	35	45	30	70	75	70
B	230	285	650	300	340	370	285	550	350	355	505	525
C	75	15	30	30	110	70	35	20	95	300	80	55
D	50	190	260	160	160	130	40	35	220	120	335	475
E	135	160	60	110	150	50	40	50	80	90	60	110
F	25	30	70	40	110	80	150	60	325	250	30	165
G	30	40	100	20	110	60	60	60	105	55	100	70
H	270	70	200	210	160	60	290	50	220	270	220	280
I	45	65	200	100	40	260	45	30	50	260	120	220
J	50	50	165	570	700	345	50	110	320	515	550	325
K	550	260	360	210	60	570	165	270	295	360	165	460
L	70	50	160	90	30	400	210	140	255	165	180	210

表 17 尿液中 cephalexin 含量 (mg)

受試者 編號	Keflex Time (hr)						原型回收率	
	0-1	1-2	2-4	4-6	6-8	8-10	Total	(%)
A	79.34	24.09	30.00	84.22	14.92	3.13	235.70	94.28
B	35.14	135.56	48.70	16.15	4.50	2.16	242.21	96.88
C	58.10	88.72	60.27	18.89	6.92	2.12	235.01	94.01
D	66.33	126.58	14.74	24.58	4.33	2.27	238.83	95.53
E	25.38	159.29	38.47	20.02	2.92	0.46	246.53	98.61
F	72.08	93.26	44.92	14.40	4.57	3.03	232.27	92.90
G	37.04	100.88	58.78	7.23	26.47	2.22	232.63	93.05
H	106.13	66.38	50.67	22.55	4.06	1.51	251.31	100.52
I	18.22	118.89	90.76	9.34	0.12	0.74	238.06	95.22
J	17.35	139.17	83.42	8.53	0.00	0.00	248.47	99.39
K	17.04	108.95	97.54	16.07	0.40	1.85	241.87	96.75
L	38.00	123.14	59.46	8.45	0.32	1.17	230.53	92.21
平均原型回收率=95.78%		S.D.=2.70		C.V.=2.81%				

受試者 編號	Cephanmycin Time (hr)						原型回收率	
	0-1	1-2	2-4	4-6	6-8	8-10	Total	(%)
A	11.17	183.21	38.71	13.59	5.67	1.48	253.82	101.53
B	40.68	119.57	50.98	21.03	3.24	1.48	236.98	94.79
C	52.61	88.93	84.29	16.91	3.10	2.85	248.69	99.48
D	146.07	53.91	31.39	12.39	0.56	3.98	248.31	99.32
E	7.43	126.82	84.20	12.26	2.05	0.75	233.51	93.40
F	84.12	53.39	80.53	11.88	1.31	1.48	232.70	93.08
G	33.35	75.64	84.66	19.89	21.12	2.27	236.94	94.77
H	76.40	65.72	46.16	23.51	8.27	5.46	225.51	90.20
I	62.21	109.83	41.10	20.02	2.67	0.92	236.76	94.70
J	72.23	93.06	59.84	6.44	0.00	0.00	231.58	92.63
K	8.35	155.81	28.53	29.99	2.39	2.49	227.56	91.02
L	50.58	121.50	35.43	15.25	3.48	0.36	226.60	90.64
平均原型回收率=94.63%		S.D.=3.69		C.V.=3.90%				

表 18 Cephalexin 尿中平均排泄速率 (mg/hr)

受試者 編 號	Keflex Time (hr)					
	0.5	1.5	3	5	7	9
A	79.34	24.09	15.00	42.11	7.46	1.57
B	35.14	135.56	24.35	8.08	2.25	1.08
C	58.10	88.72	30.14	9.45	3.46	1.06
D	66.33	126.58	7.37	12.29	2.17	1.14
E	25.38	159.29	19.24	10.01	1.46	0.23
F	72.08	93.26	22.46	7.20	2.29	1.52
G	37.04	100.88	29.39	3.62	13.24	1.11
H	106.13	66.38	25.34	11.28	2.03	0.76
I	18.22	118.89	45.38	4.67	0.06	0.37
J	17.35	139.17	41.71	4.27	0.00	0.00
K	17.04	108.95	48.77	8.04	0.20	0.93
L	38.00	123.14	29.73	4.23	0.16	0.59
Mean	47.51	107.08	28.24	10.44	2.90	0.86
S.D.	28.70	36.25	12.26	10.39	3.85	0.49
C.V. (%)	60.40	33.86	43.40	99.51	133.00	56.67

受試者 編 號	Cephanmycin Time (hr)					
	0.5	1.5	3	5	7	9
A	11.17	183.21	19.36	6.80	2.84	0.74
B	40.68	119.57	25.49	10.52	1.62	0.74
C	52.61	88.93	42.15	8.46	1.55	1.43
D	146.07	53.91	15.70	6.20	0.28	1.99
E	7.43	126.82	42.10	6.13	1.03	0.38
F	84.12	53.39	40.27	5.94	0.66	0.74
G	33.35	75.64	42.33	9.95	10.56	1.14
H	76.40	65.72	23.08	11.76	4.14	2.73
I	62.21	109.83	20.55	10.01	1.34	0.46
J	72.23	93.06	29.92	3.22	0.00	0.00
K	8.35	155.81	14.27	15.00	1.20	1.25
L	50.58	121.50	17.72	7.63	1.74	0.18
Mean	53.77	103.95	27.75	8.47	2.25	0.98
S.D.	39.30	40.17	11.14	3.17	2.84	0.79
C.V. (%)	73.09	38.64	40.13	37.40	126.62	80.02

表 19 清除率 (Clearance, L/hr)

受試者 編 號	Keflex		Cephanmycin	
	Cl _R	Cl _T	Cl _R	Cl _T
A	11.44	12.03	12.22	11.97
B	16.78	17.17	13.02	13.41
C	9.16	9.64	8.93	8.93
D	11.03	11.45	12.32	12.21
E	16.24	16.18	11.94	12.51
F	11.71	11.82	11.32	12.06
G	10.13	10.48	13.03	13.57
H	13.26	13.06	13.66	14.93
I	14.93	15.49	13.60	14.30
J	16.44	16.17	13.99	15.03
K	14.95	15.33	15.89	17.34
L	10.57	10.47	13.22	14.49
Mean	13.05	13.27	12.76	13.40
S.D.	2.71	2.65	1.68	2.10

註：Cl_R 為腎清除率

Cl_T 為總清除率

圖 1 Keflex[?] 和 Cephalexin[?] 在不同 pH 之溶離試驗曲線圖

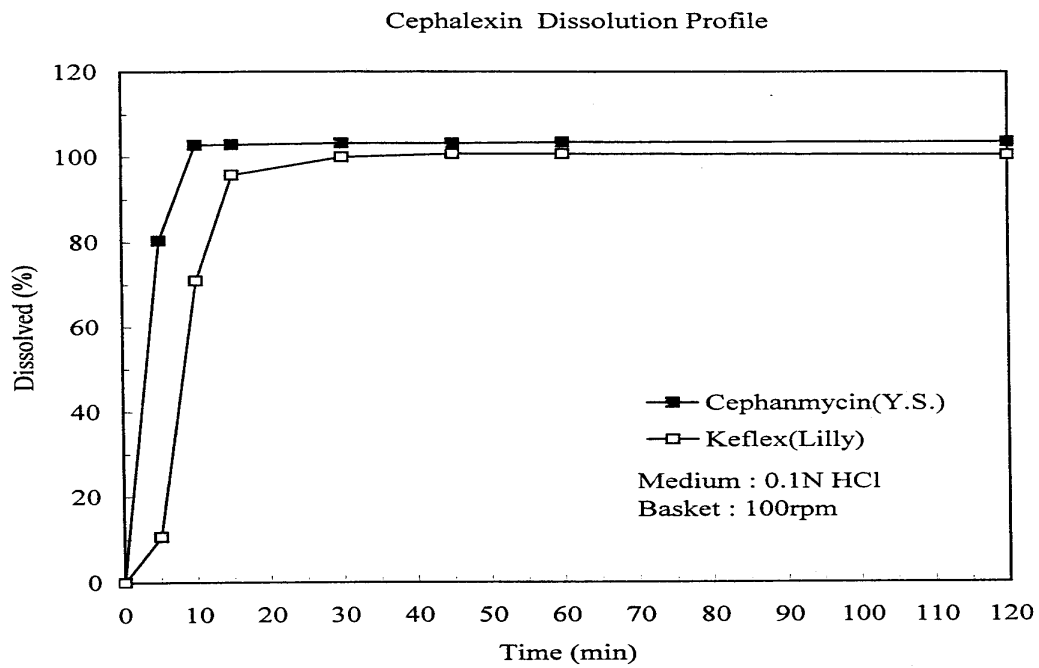


圖 1-1 兩種 cephalexin 膠囊劑在 0.1N HCl 中的溶離曲線

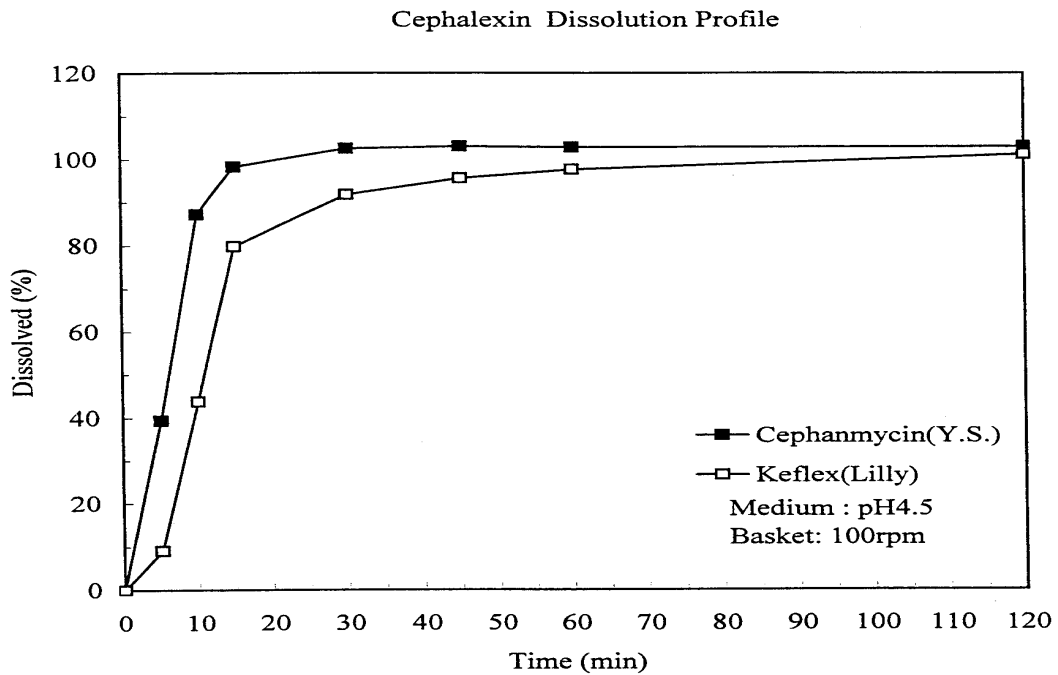


圖 1-2 兩種 cephalexin 膠囊劑在 pH 4.5 溶離液中的溶離曲線

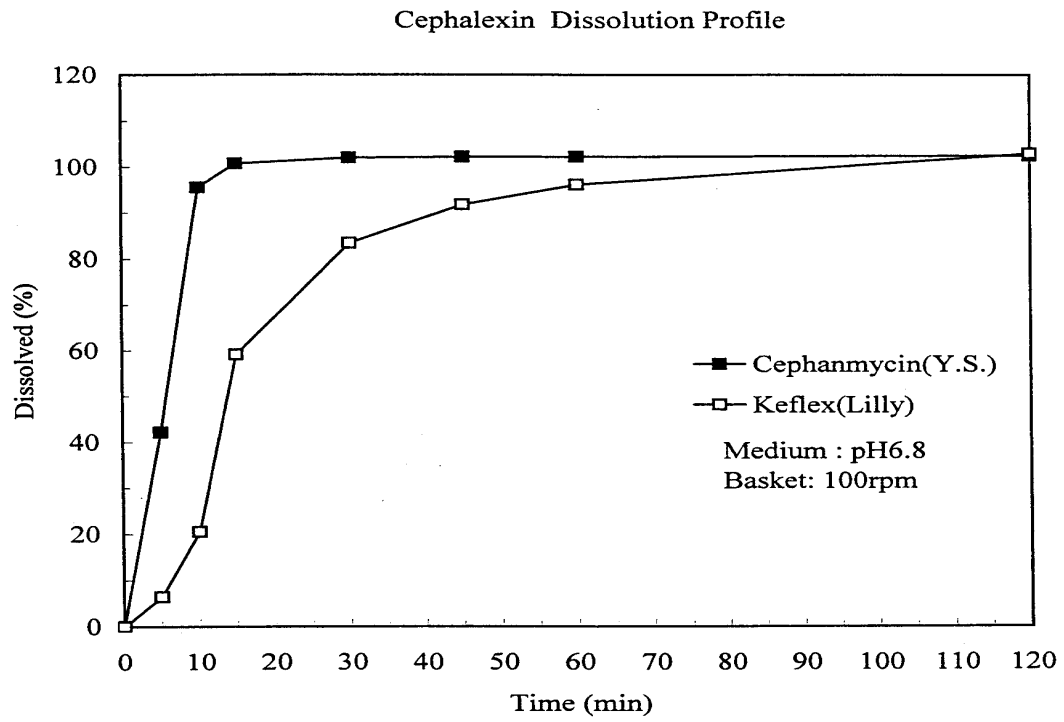
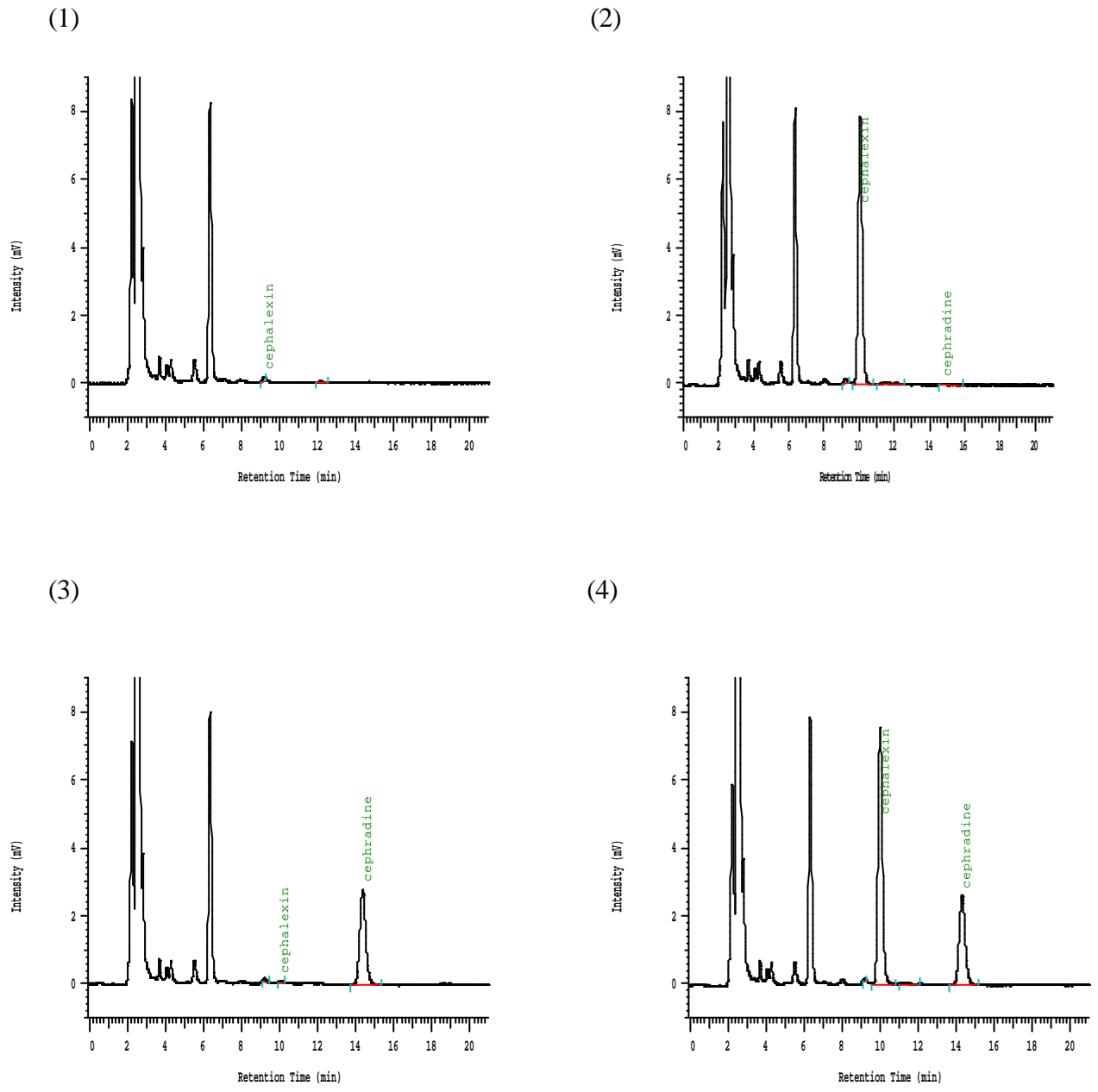


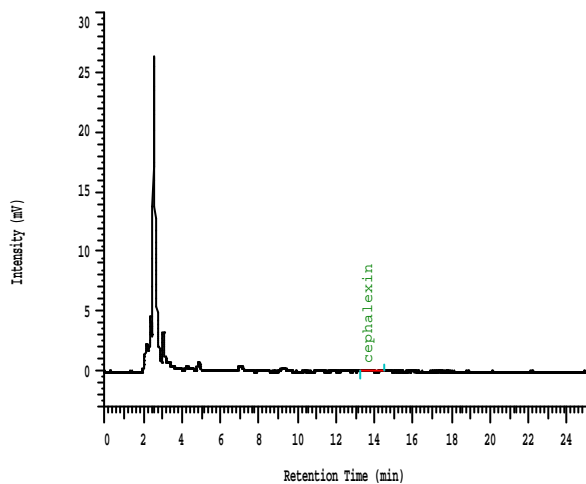
圖 1-3 兩種 cephalexin 膠囊劑在 pH 6.8 溶離液中的溶離曲線

圖 2 Cephalexin 之高效液相層析圖

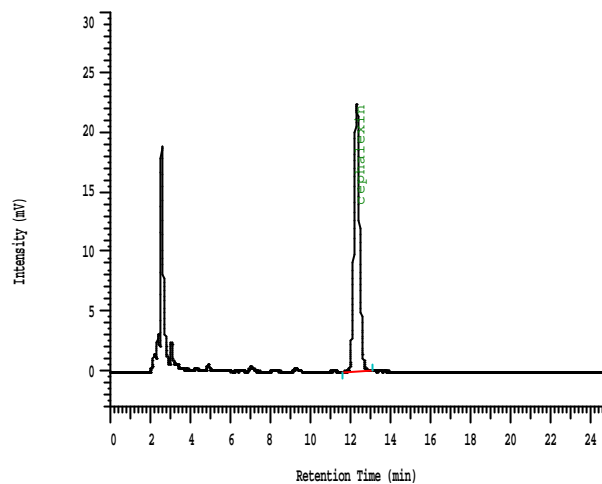


- (1) Blank plasma
- (2) Blank plasma and Cephalexin
- (3) Blank plasma and Cephadrine
- (4) Blank plasma 、 Cephalexin and Cephadrine

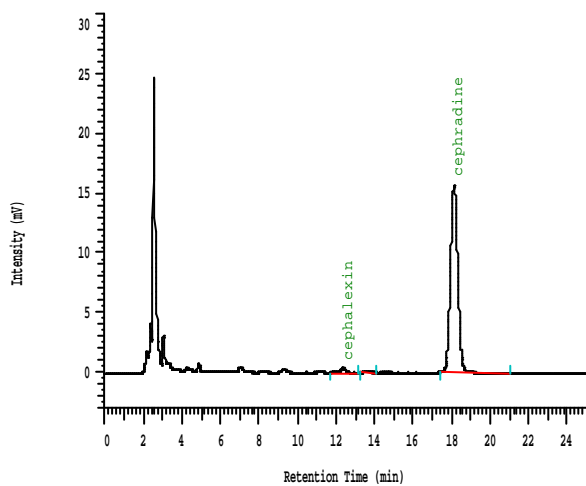
(5)



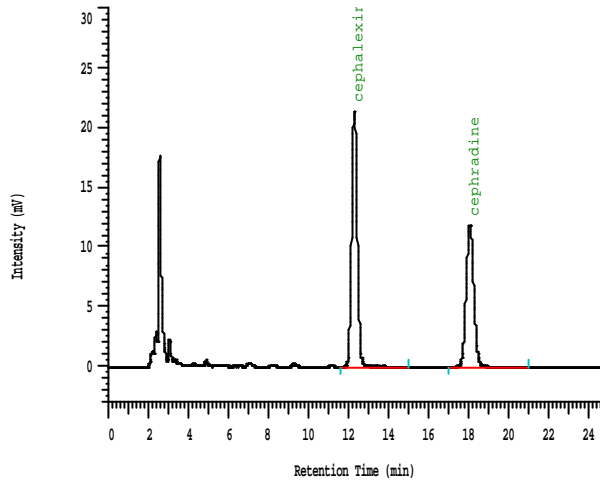
(6)



(7)



(8)



(5) Blank urea

(6) Blank urea and Cephalexin

(7) Blank urea and Cephadrine

(8) Blank urea 、 Cephalexin and Cephadrine

圖 3 Keflex[?] 與 Cepharmycin[?] 之血漿檢品總標準檢量線

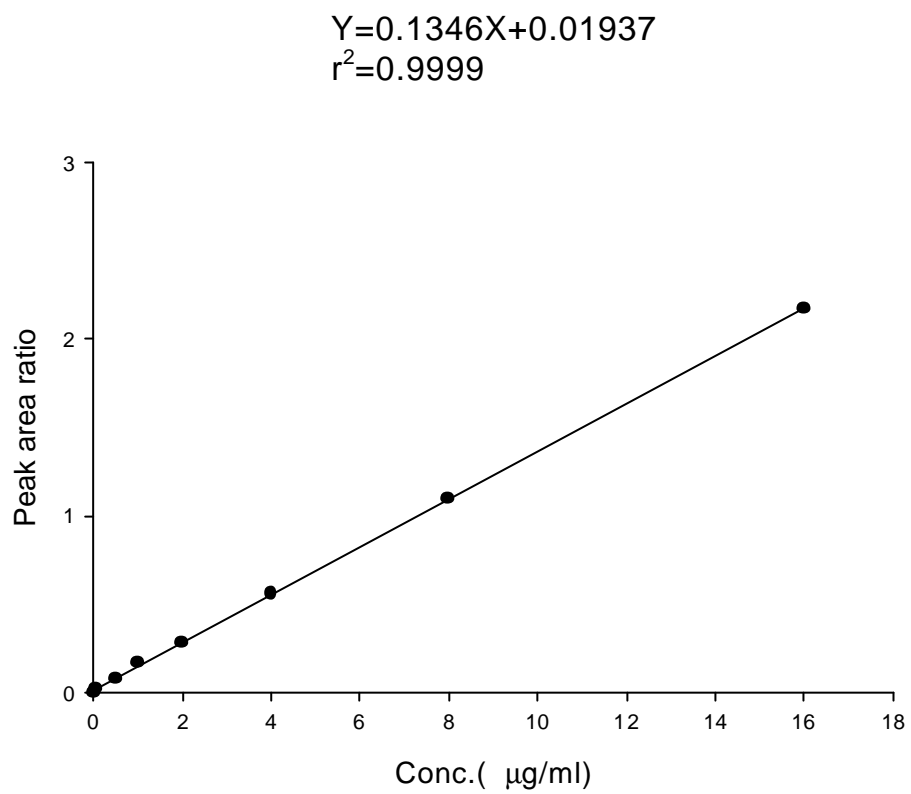
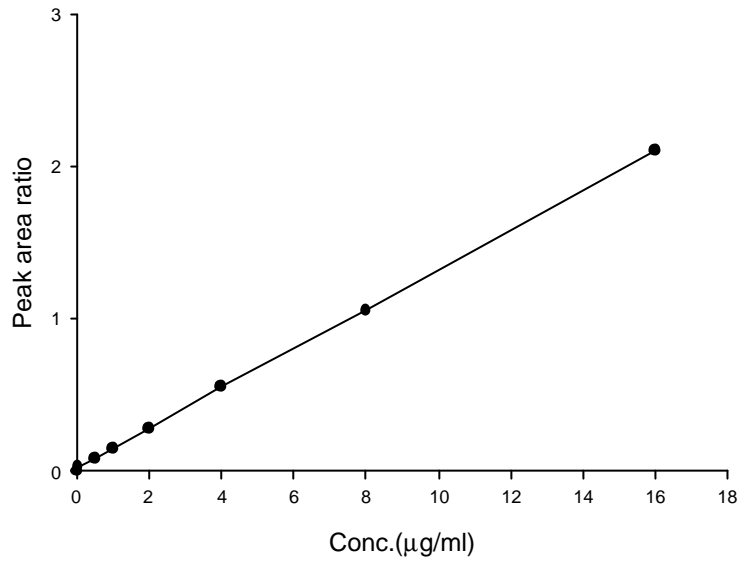


圖 4 Keflex[?] 與 Cephnamycin[?] 生體可用率比較之個別標準檢量線

Subject A

$$Y=7.6755X-0.17503$$

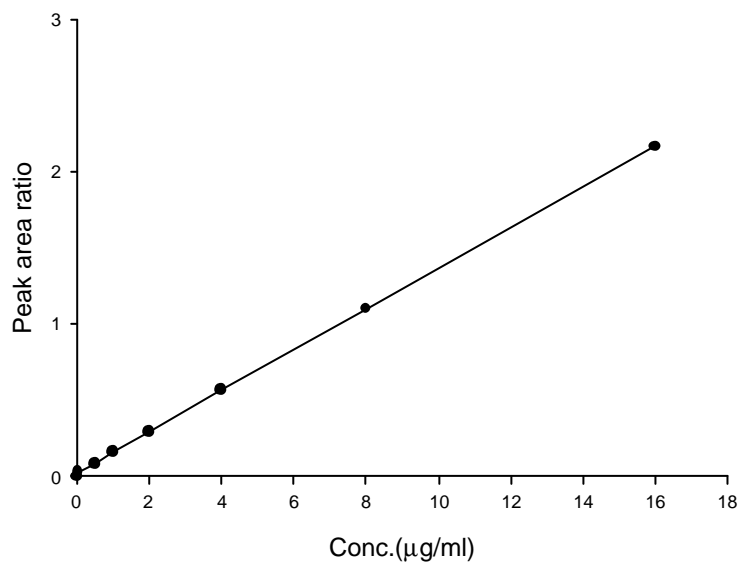
$$r^2=0.9999$$



Subject B

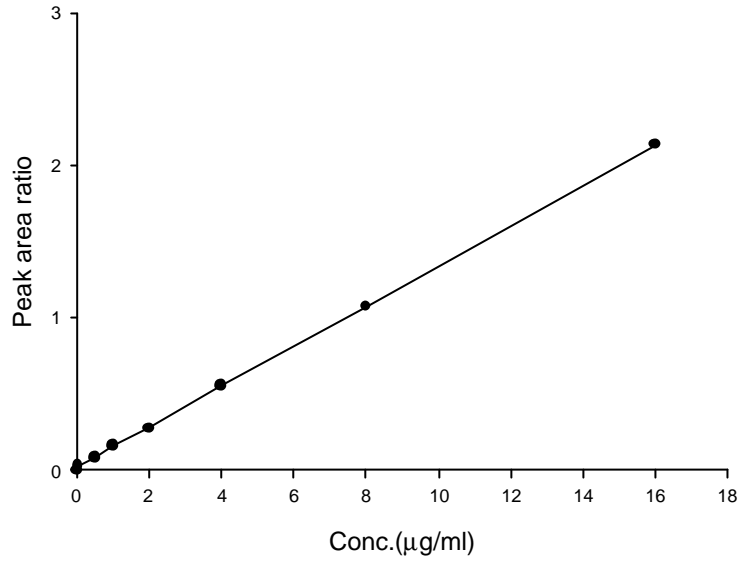
$$Y=7.4507X-0.19675$$

$$r^2=0.9999$$



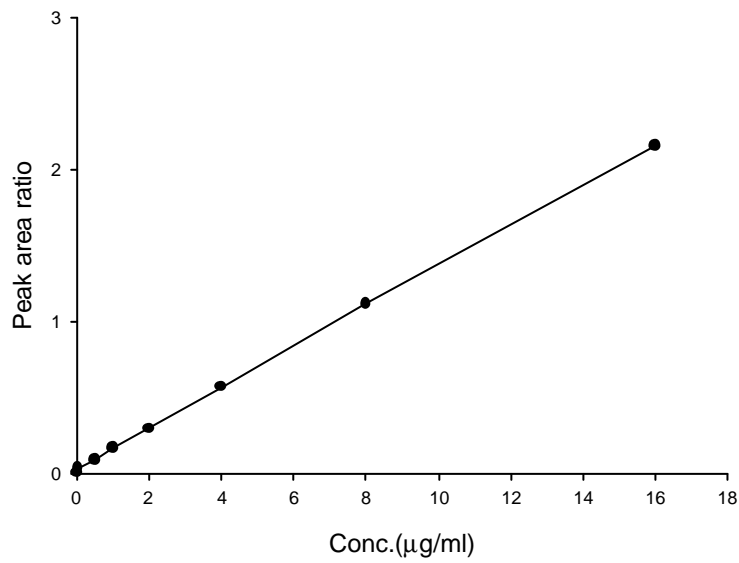
Subject C

$$Y=7.5683X-0.16009$$
$$r^2=0.9999$$



Subject D

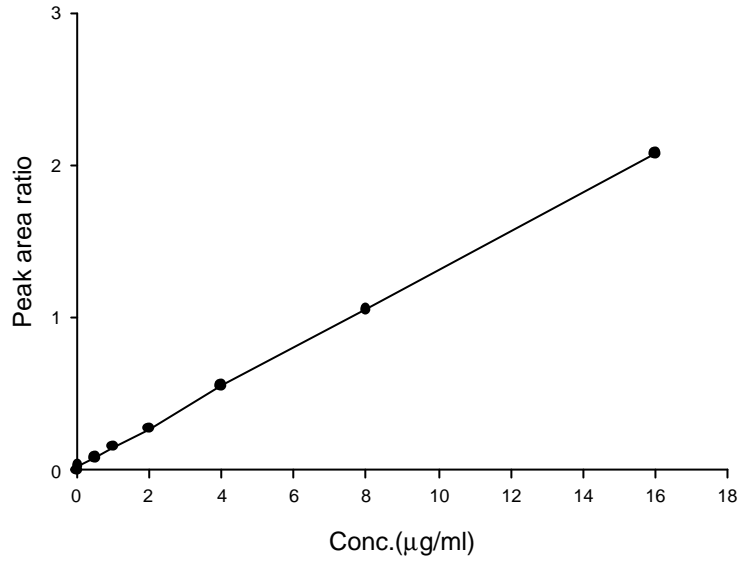
$$Y=7.5099X-0.21027$$
$$r^2=0.9998$$



Subject E

$$Y=7.7593X-0.19812$$

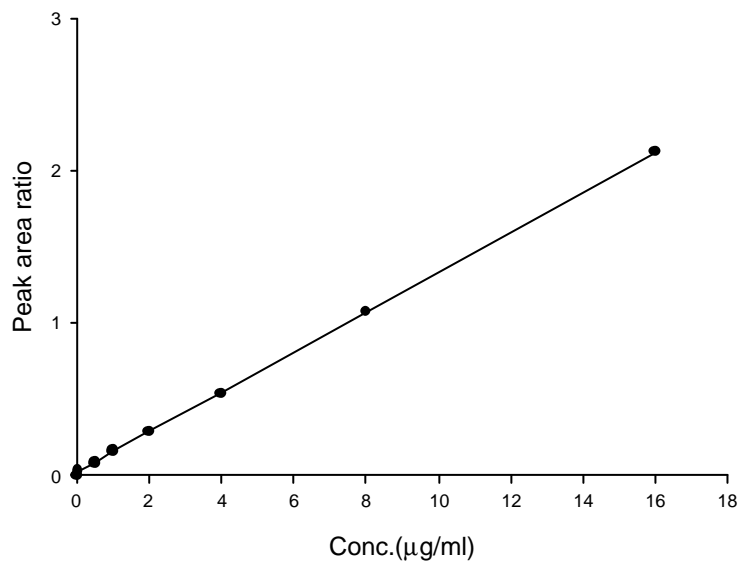
$$r^2=0.9998$$



Subject F

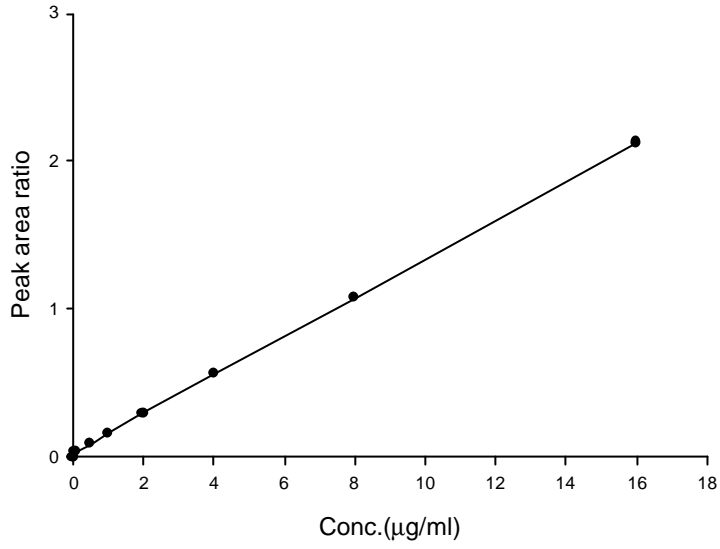
$$Y=7.6177X-0.18642$$

$$r^2=0.9999$$



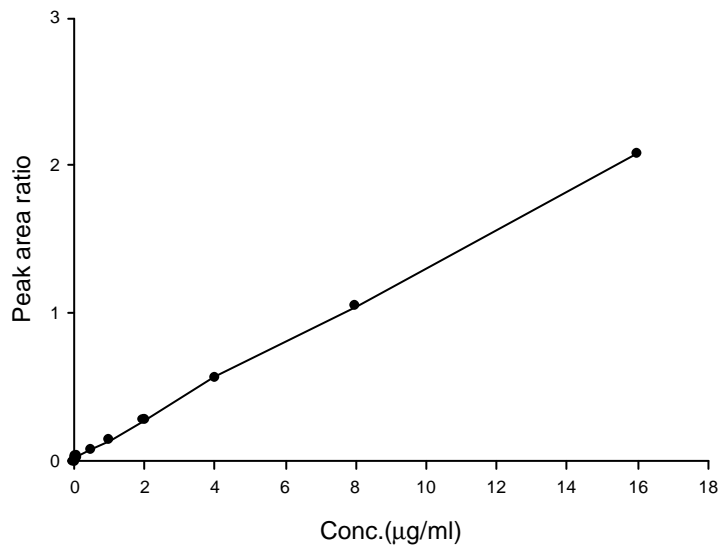
Subject G

$$Y=7.6134X-0.23815$$
$$r^2=0.9999$$



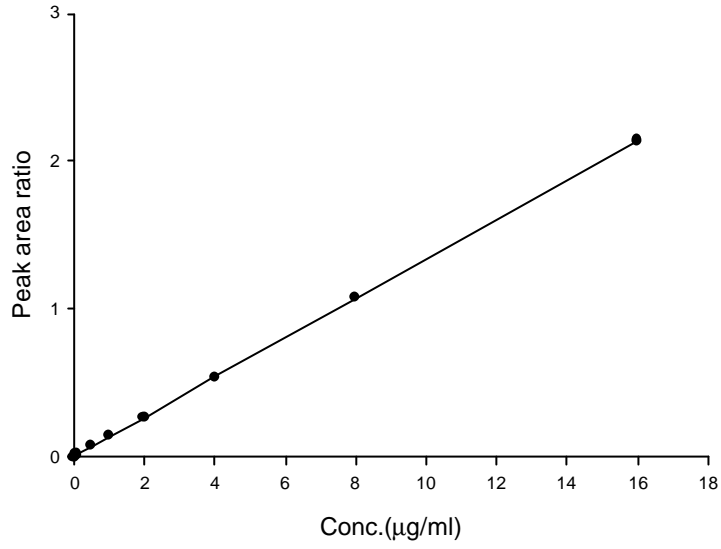
Subject H

$$Y=7.7527X-0.18933$$
$$r^2=0.9998$$



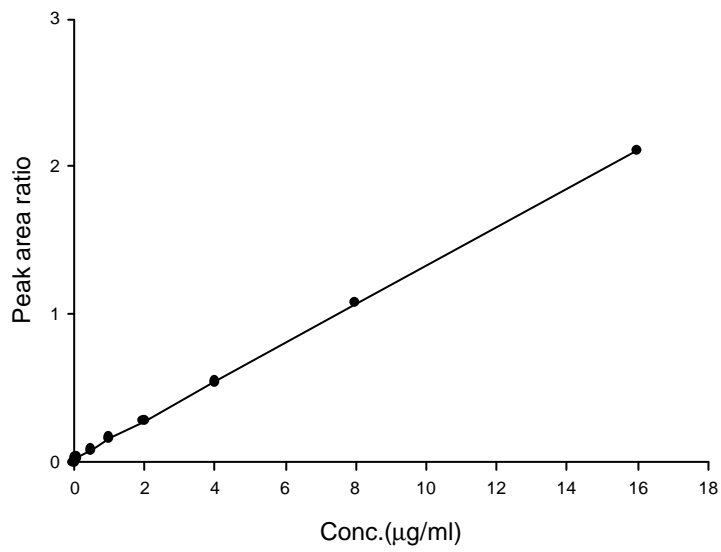
Subject I

$$Y=7.5134X-0.07894$$
$$r^2=0.9999$$



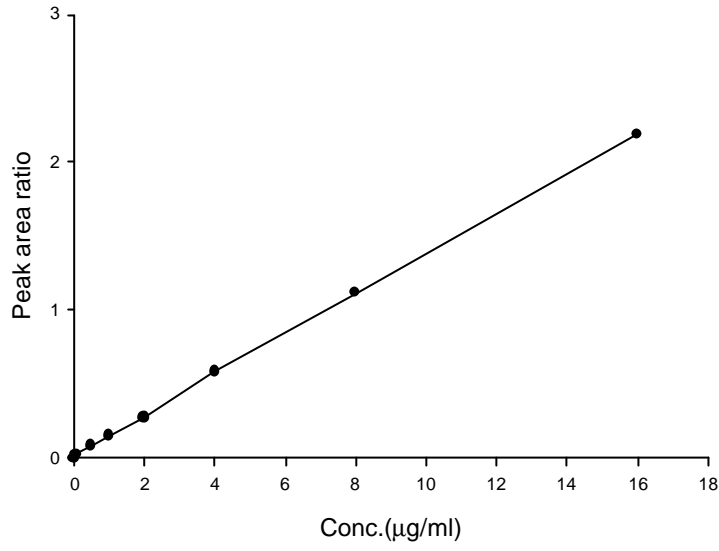
Subject J

$$Y=7.6755X-0.19858$$
$$r^2=0.9999$$



Subject K

$$Y=7.3563X-0.16701$$
$$r^2=0.9998$$



Subject L

$$Y=7.3166X-0.17648$$
$$r^2=0.9999$$

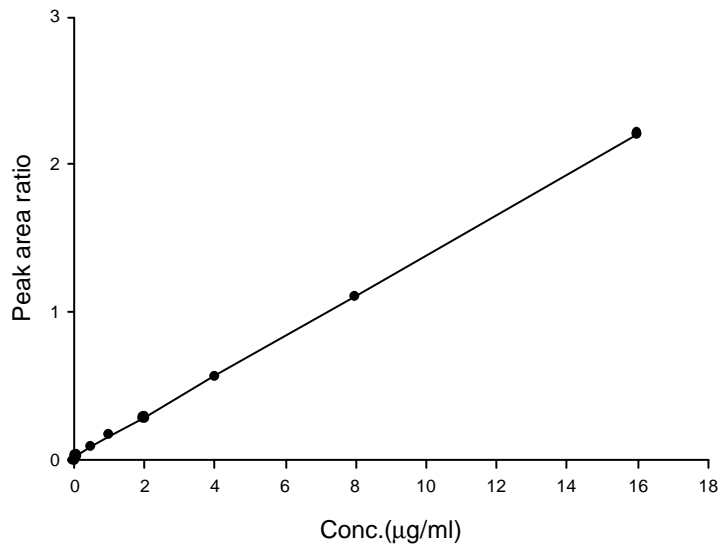
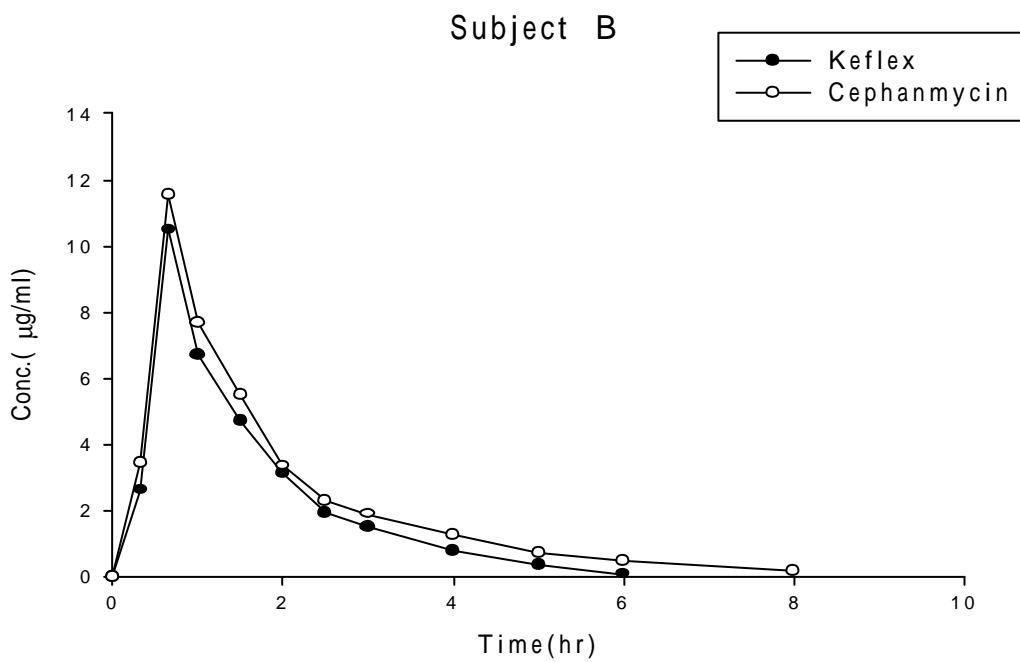
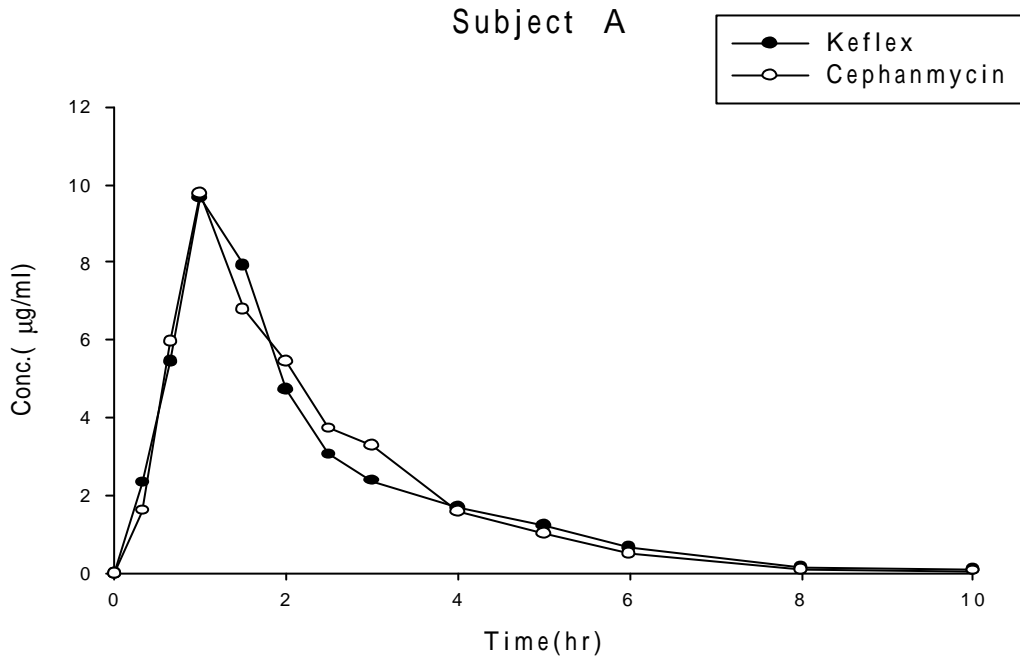
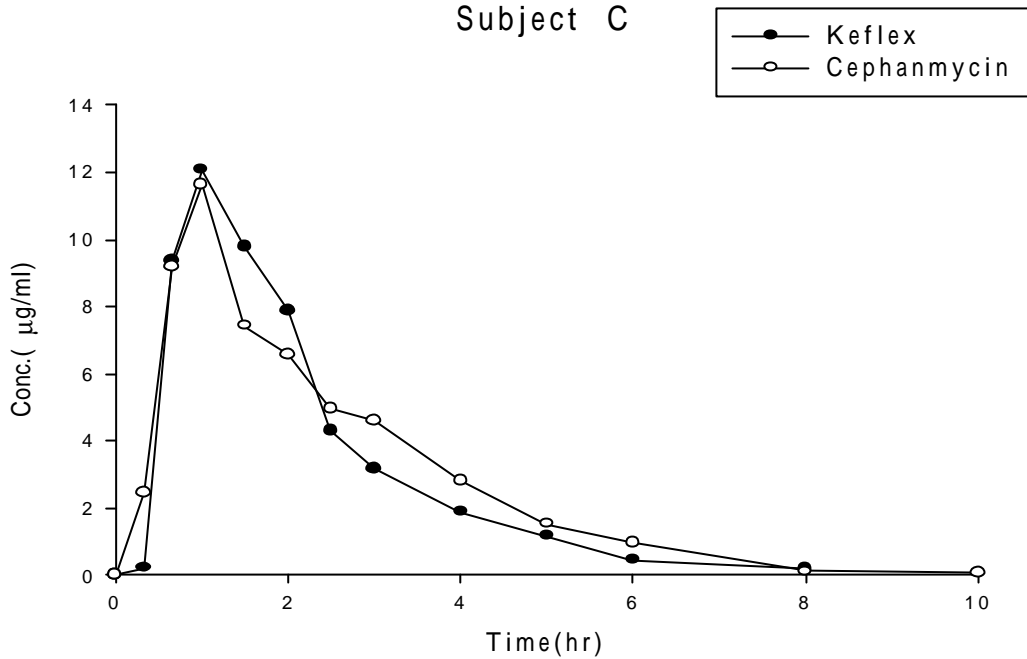


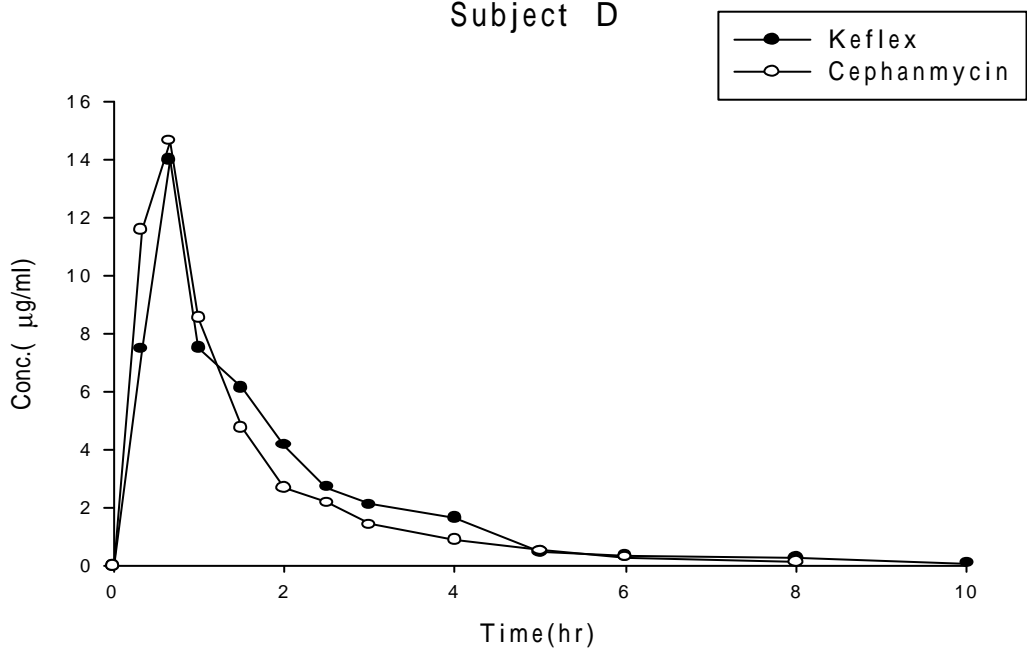
圖 5 Keflex[?] 與 Cephalexin[?] 於個別受試者血漿中 cephalexin 之濃度曲線圖



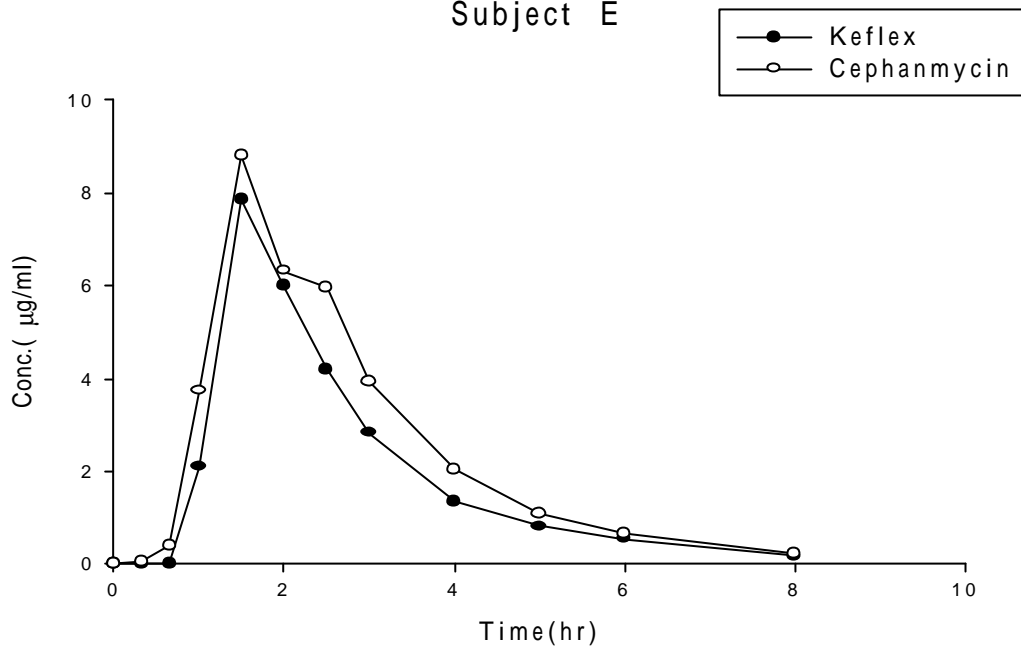
Subject C



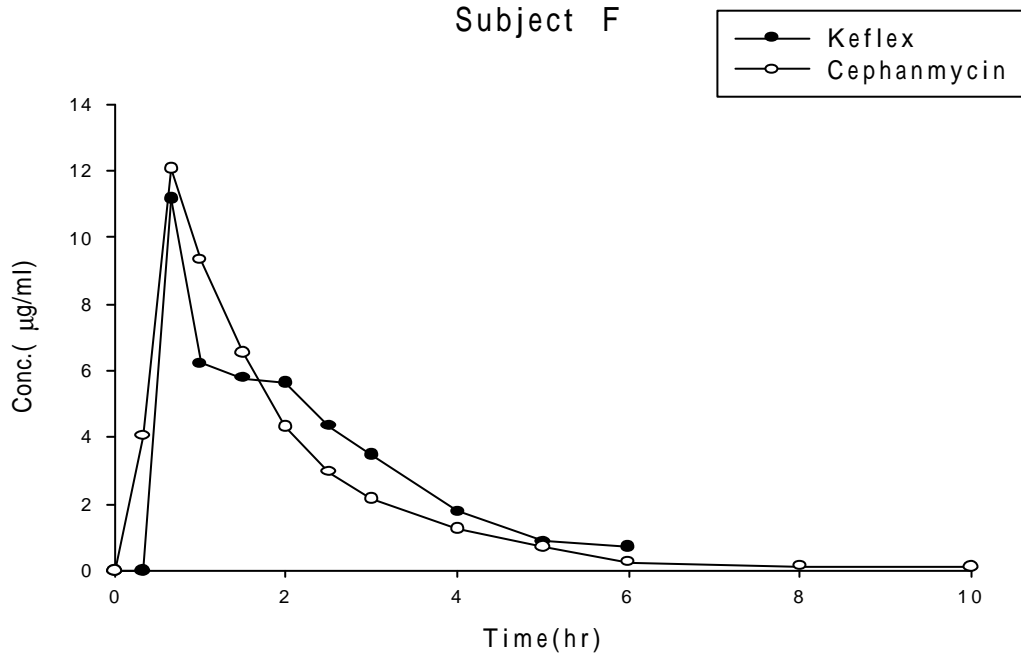
Subject D



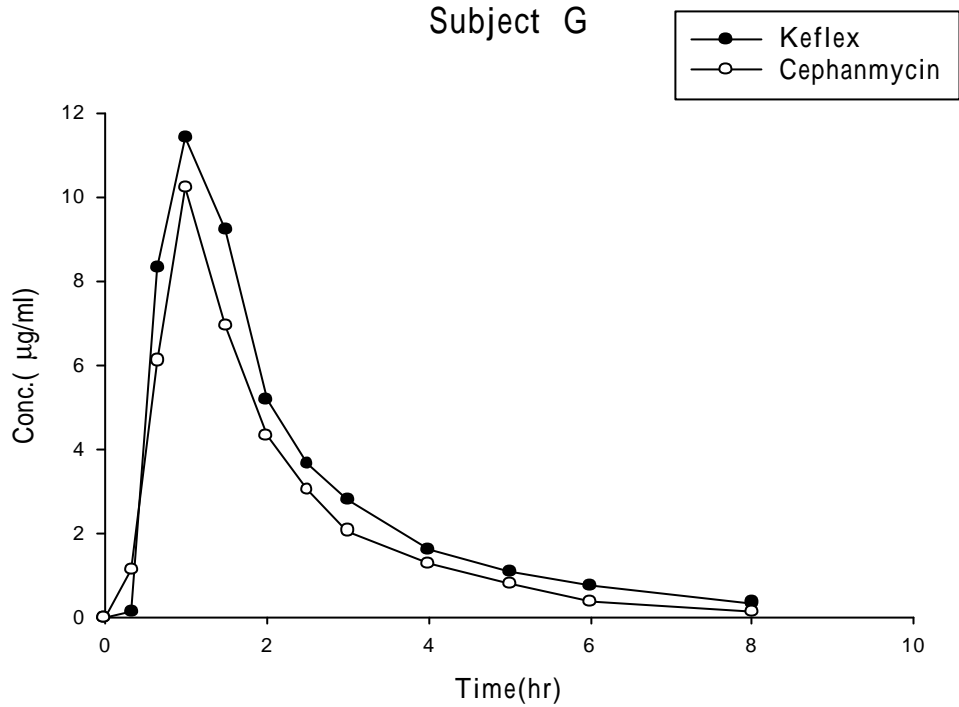
Subject E



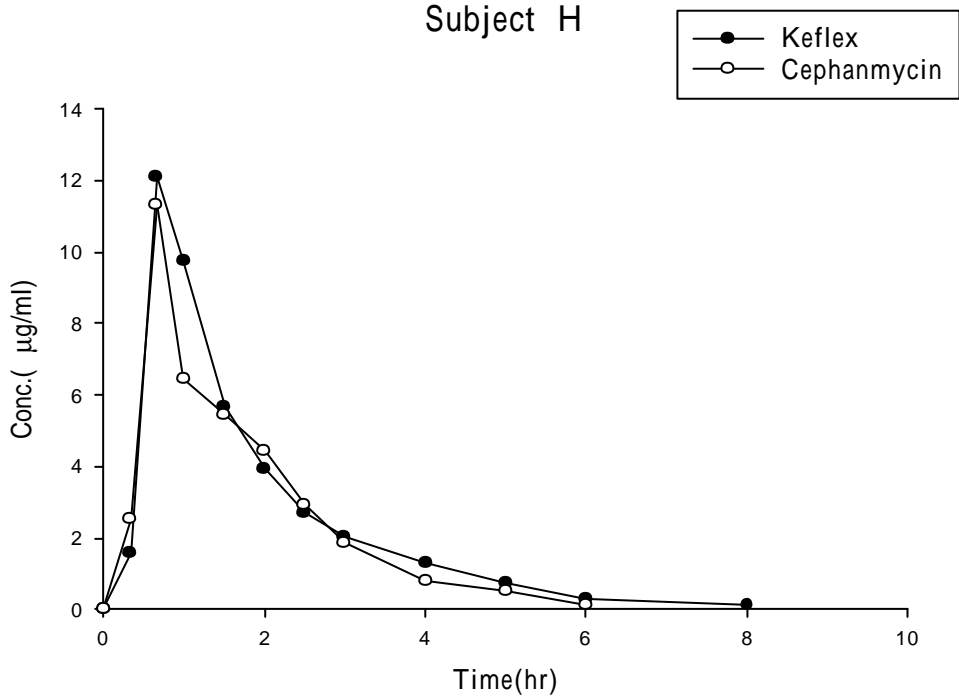
Subject F



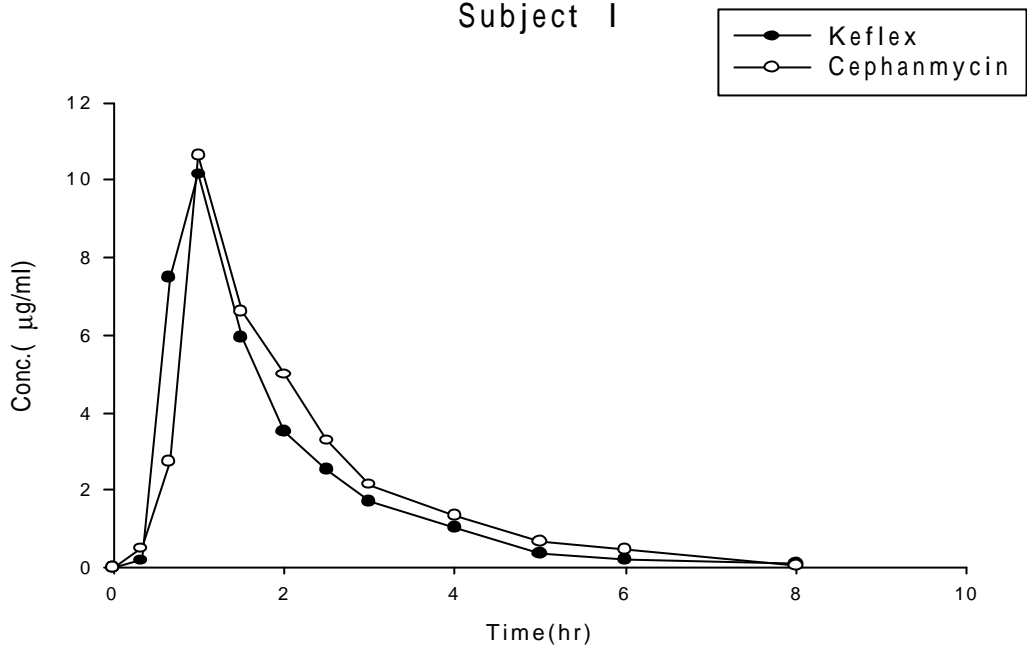
Subject G



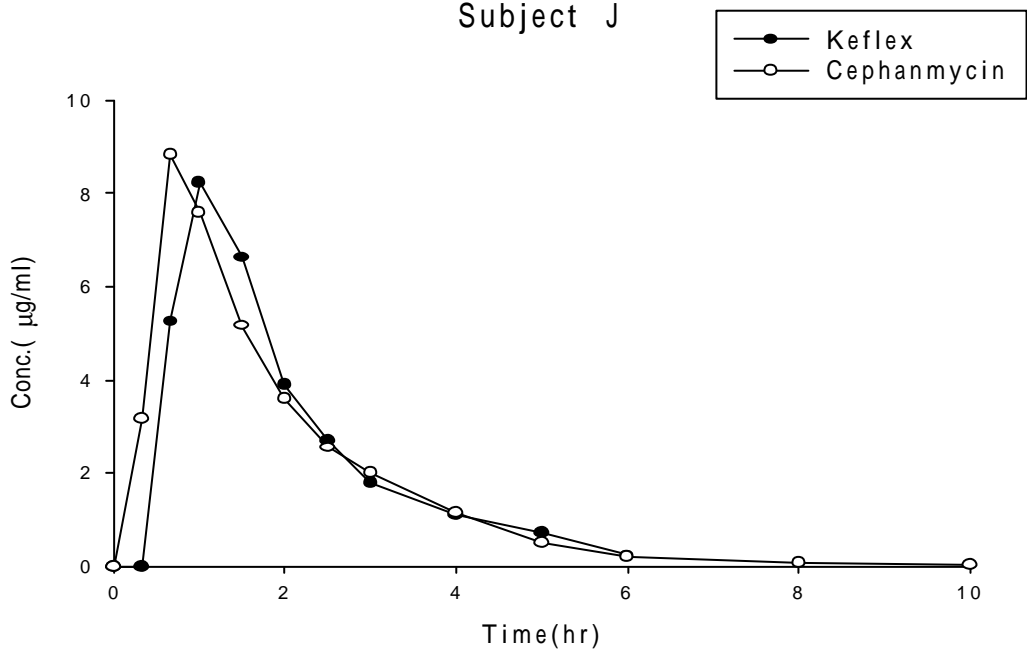
Subject H



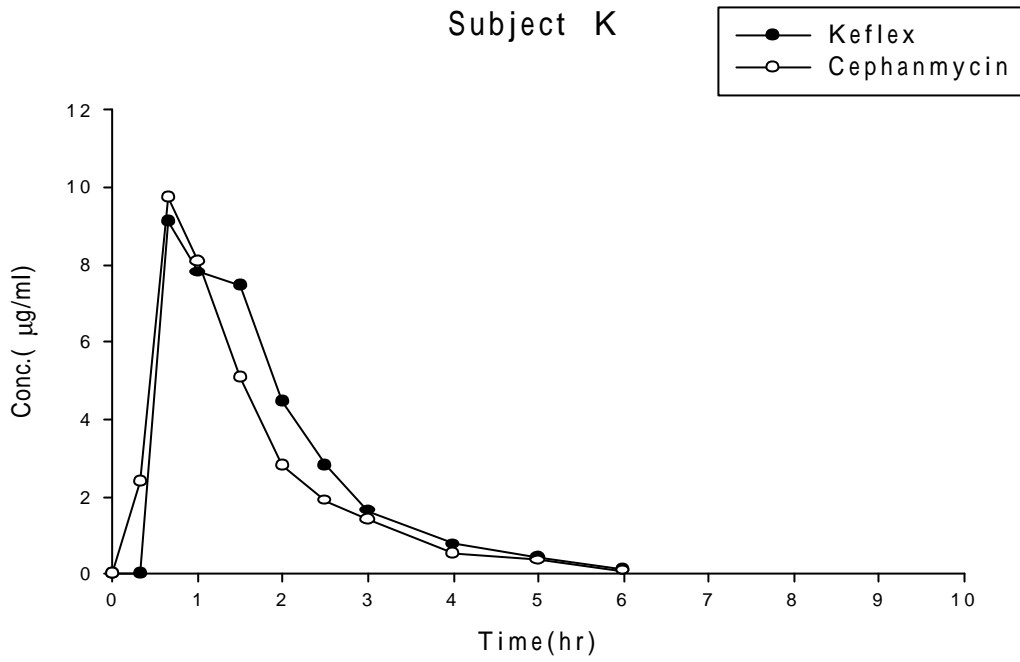
Subject I



Subject J



Subject K



Subject L

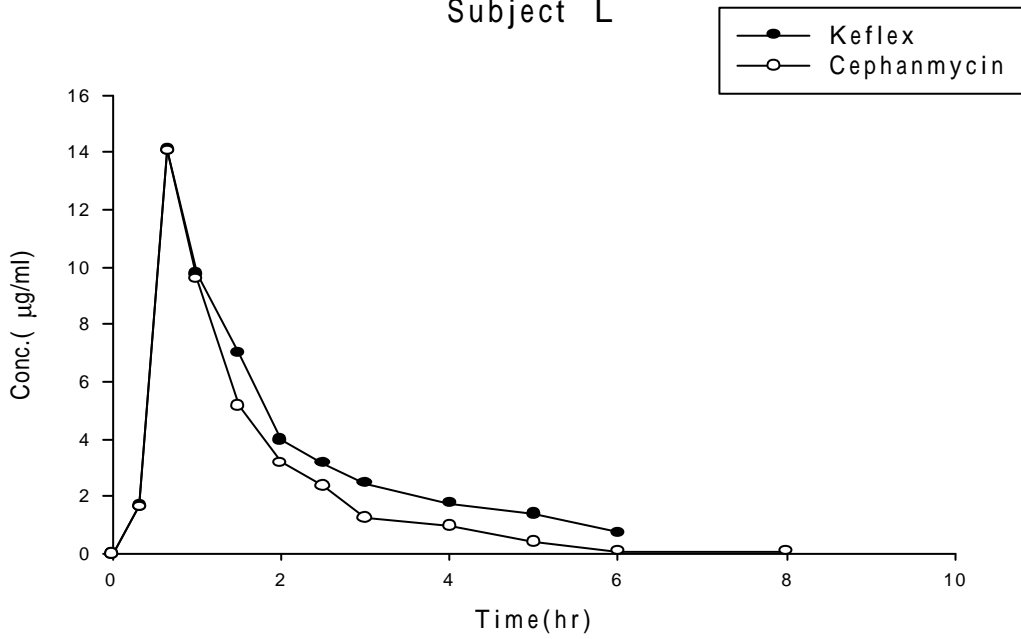


圖 6 Keflex[?] 與 Cephalexin[?] 於受試者血漿中 cephalexin 之平均血中濃度曲線圖

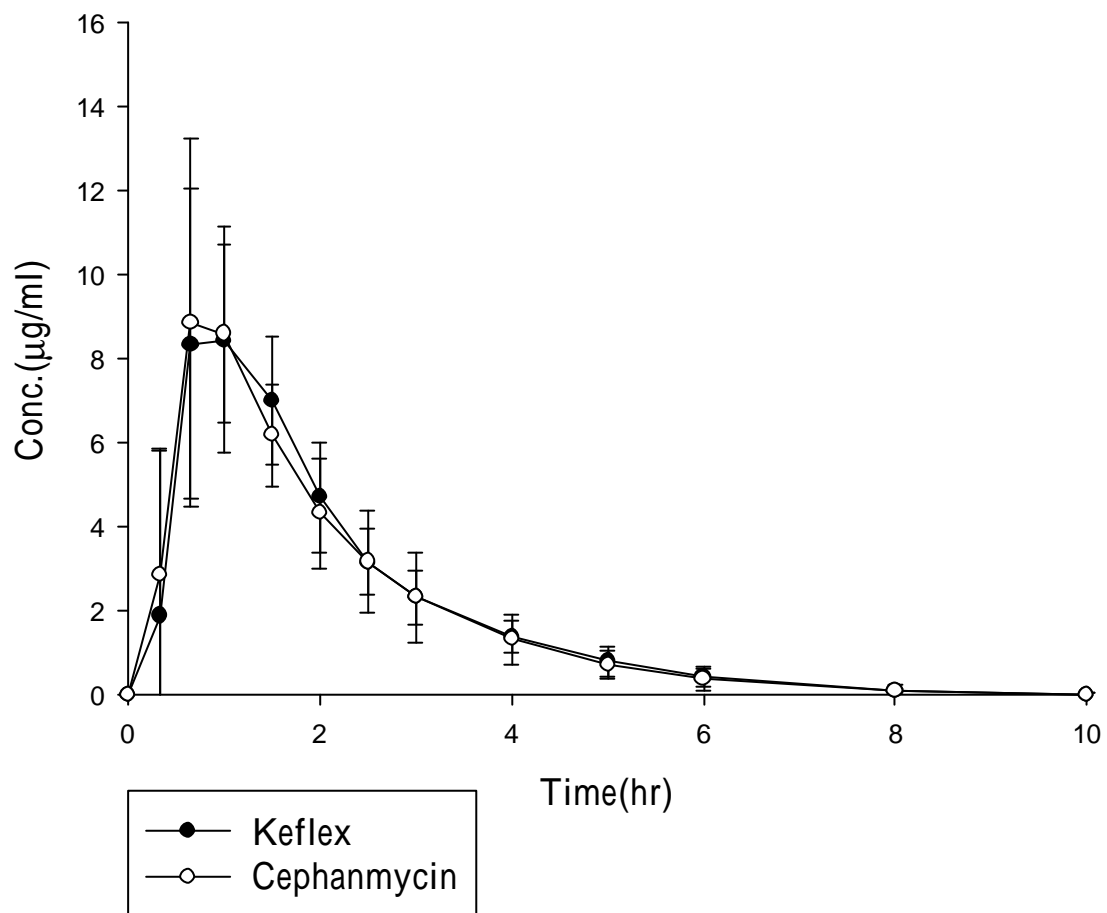
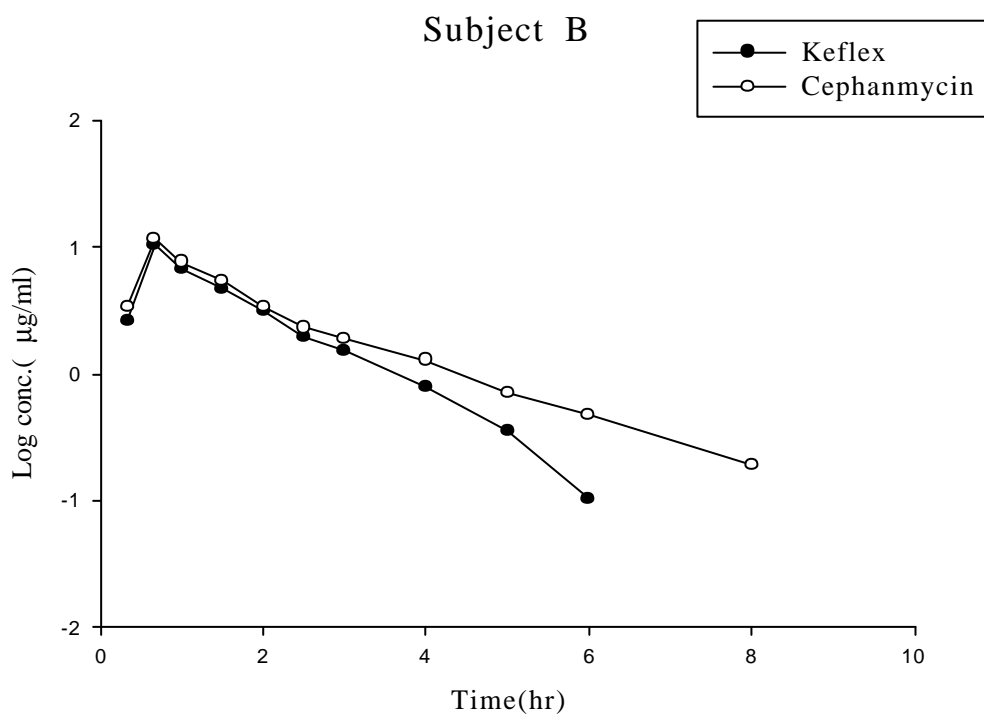
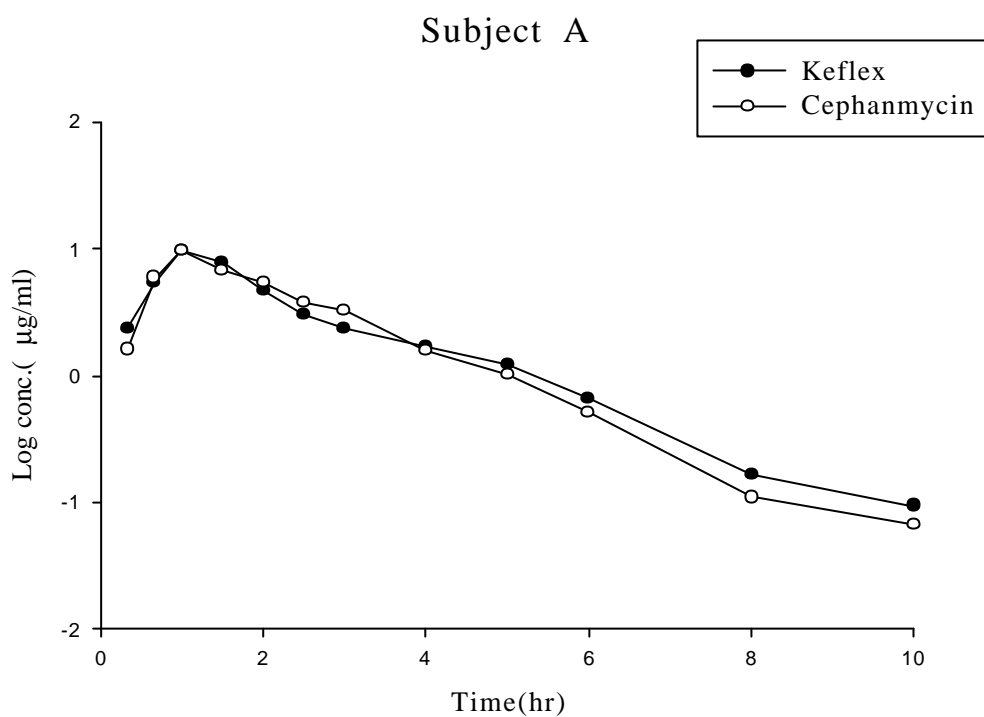
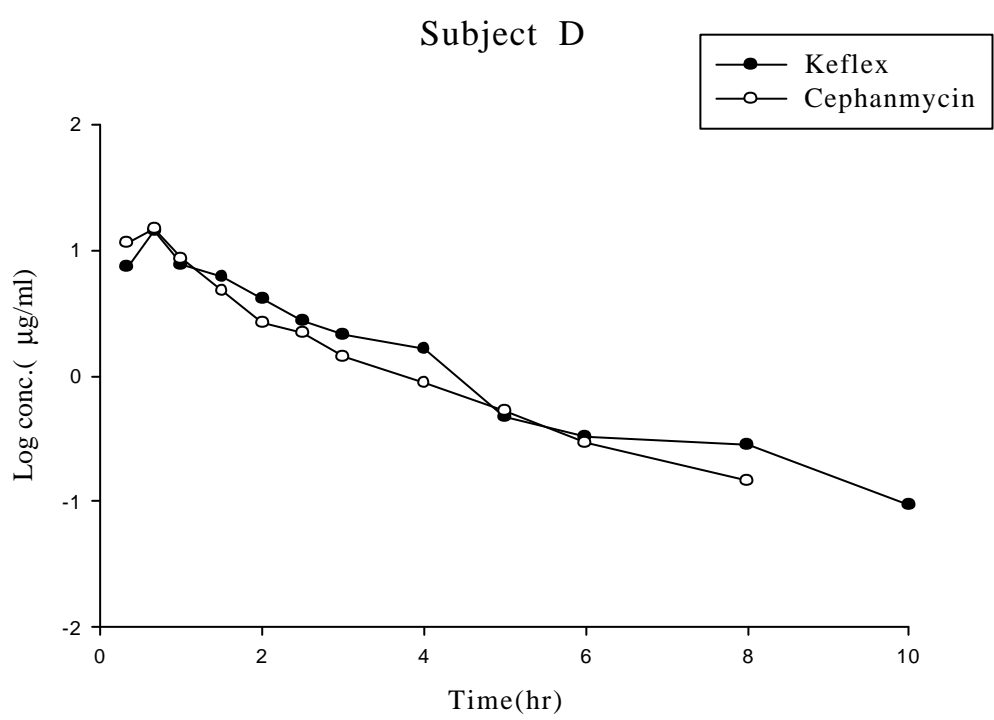
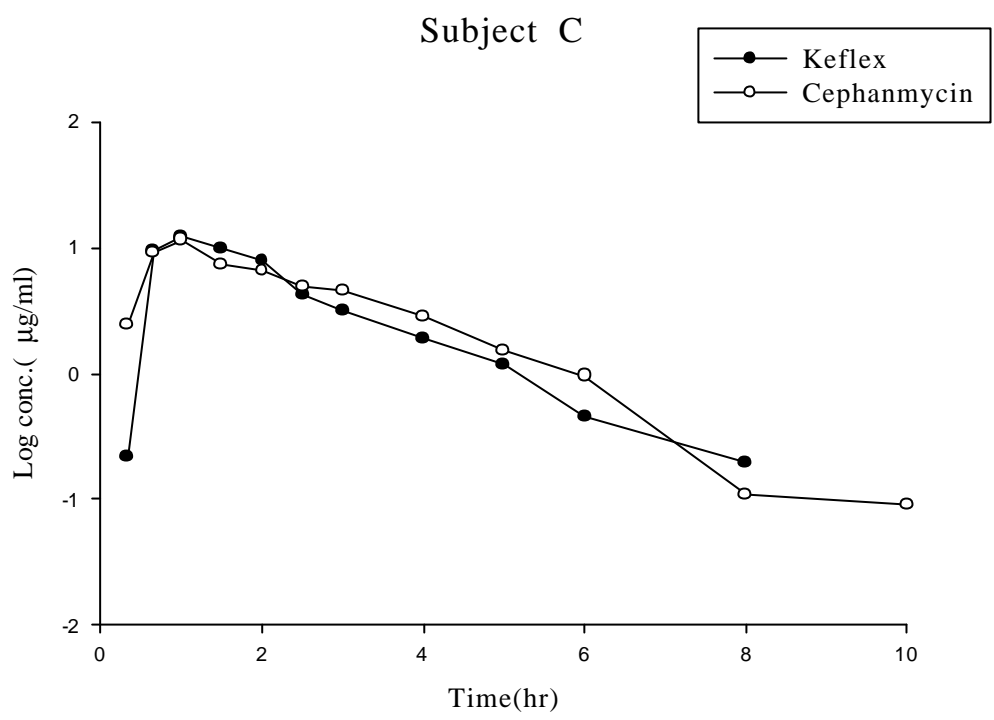
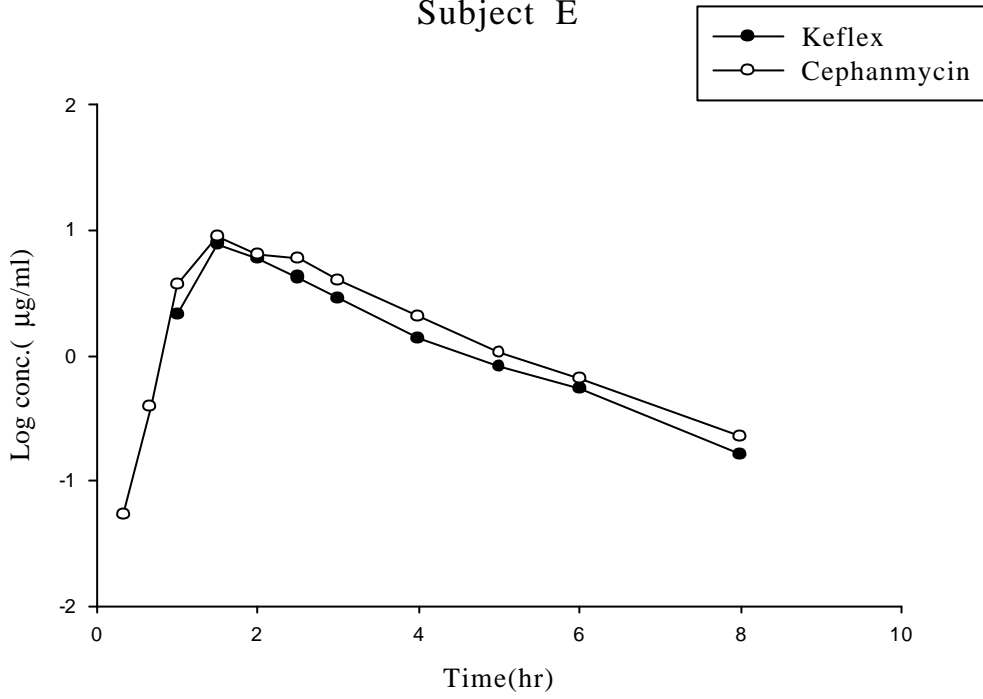


圖 7 Keflex[?] 與 Cephanmycin[?] 於個別受試者血漿中 cephalexin 之 log 濃度曲線圖

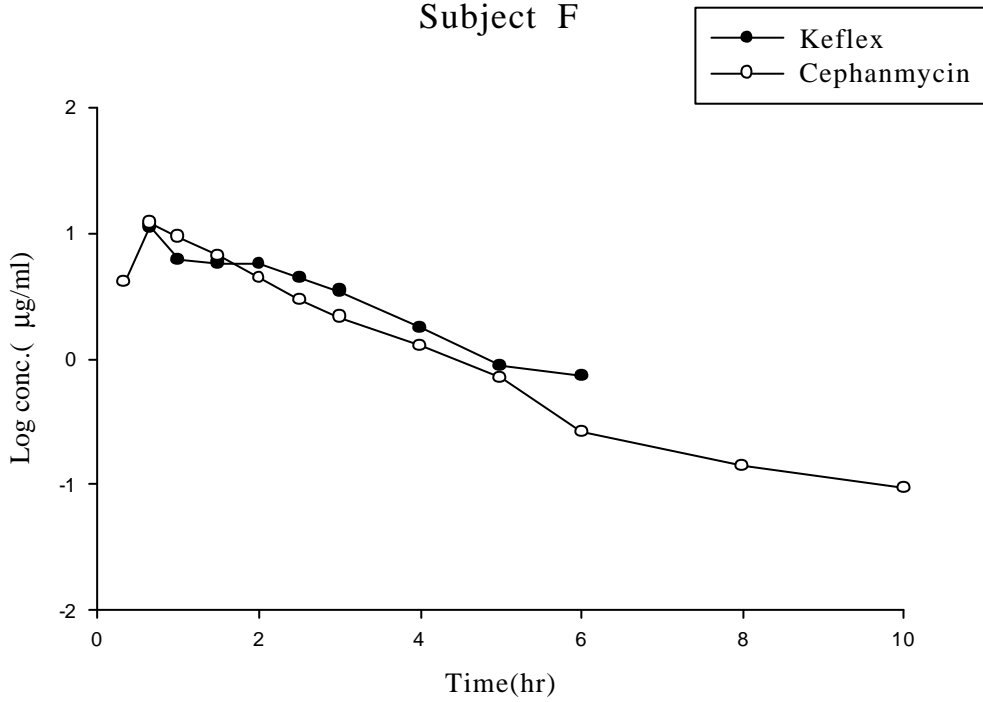




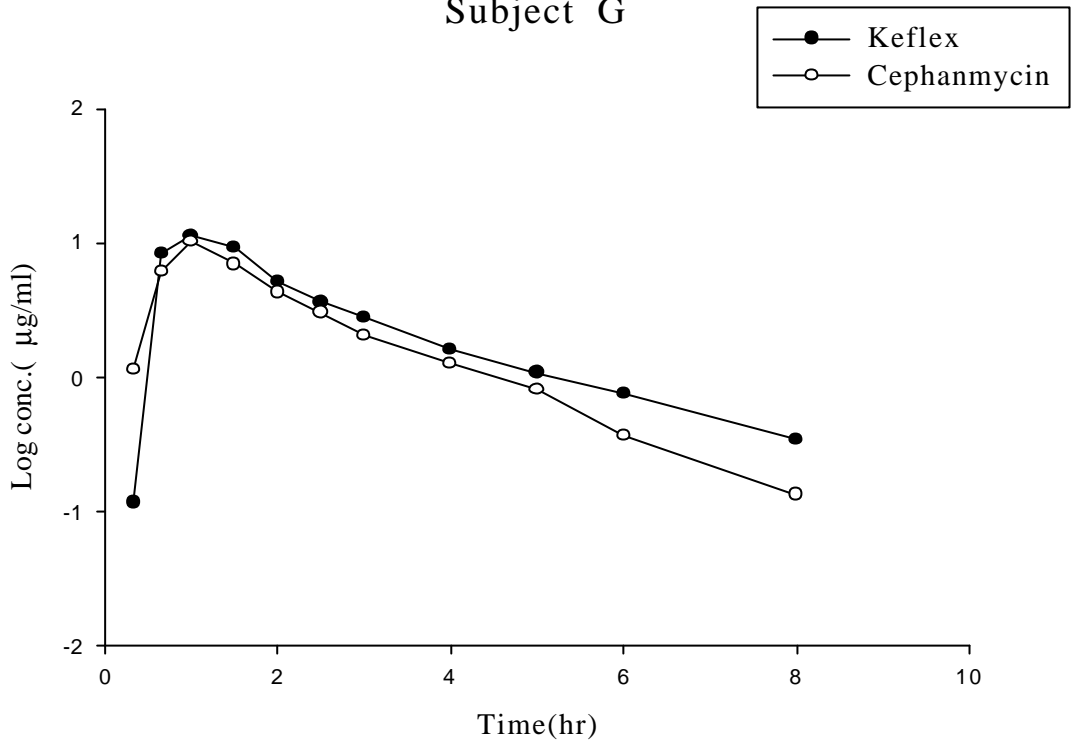
Subject E



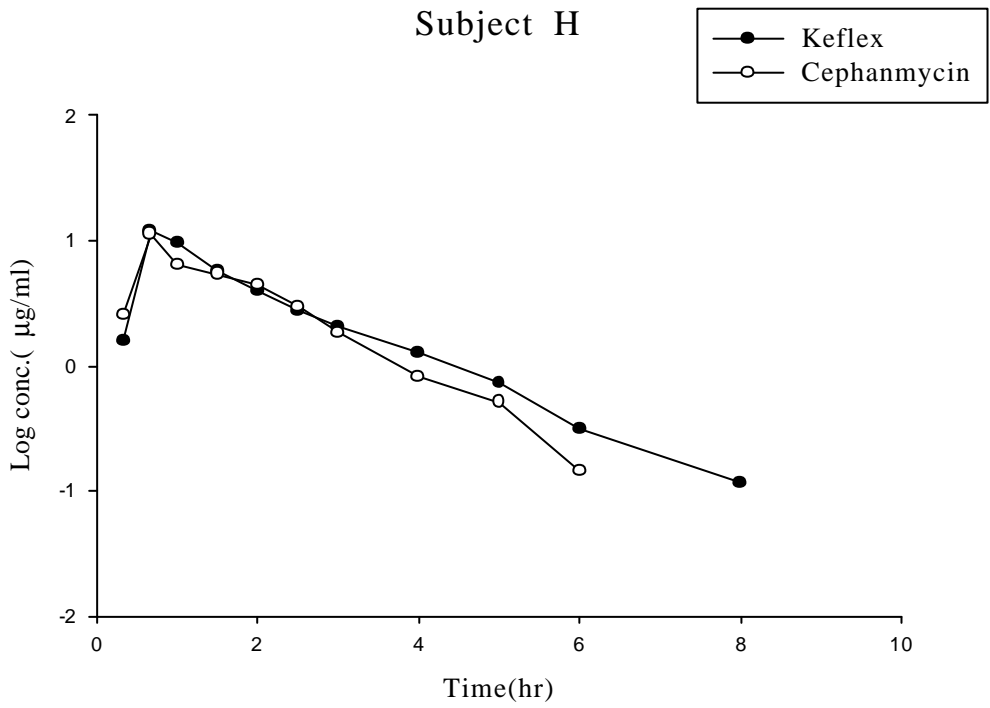
Subject F

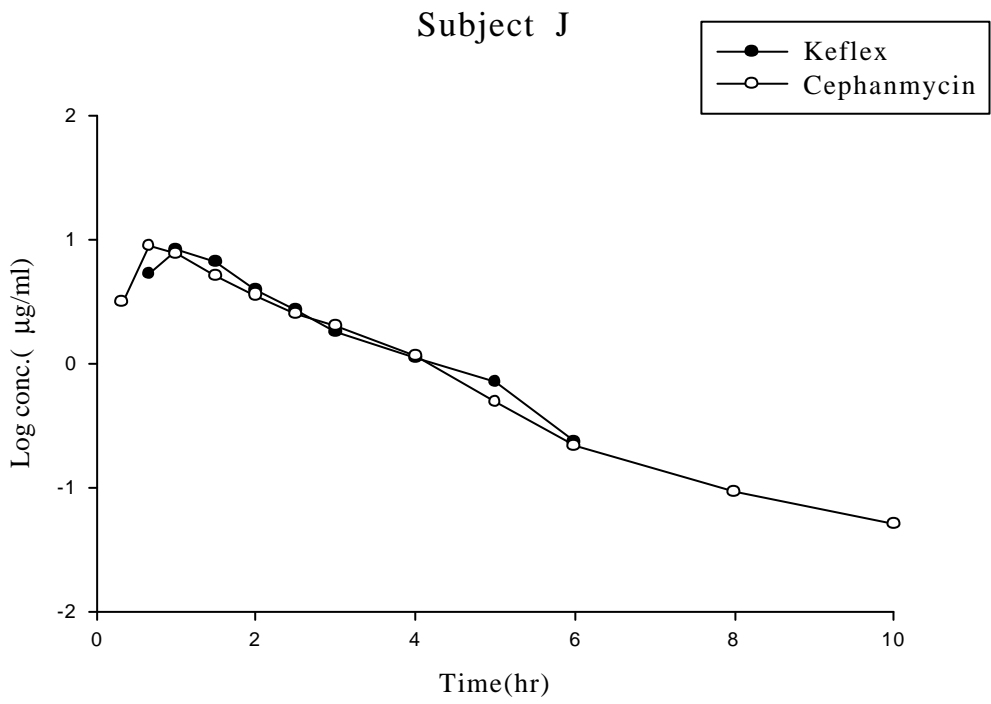
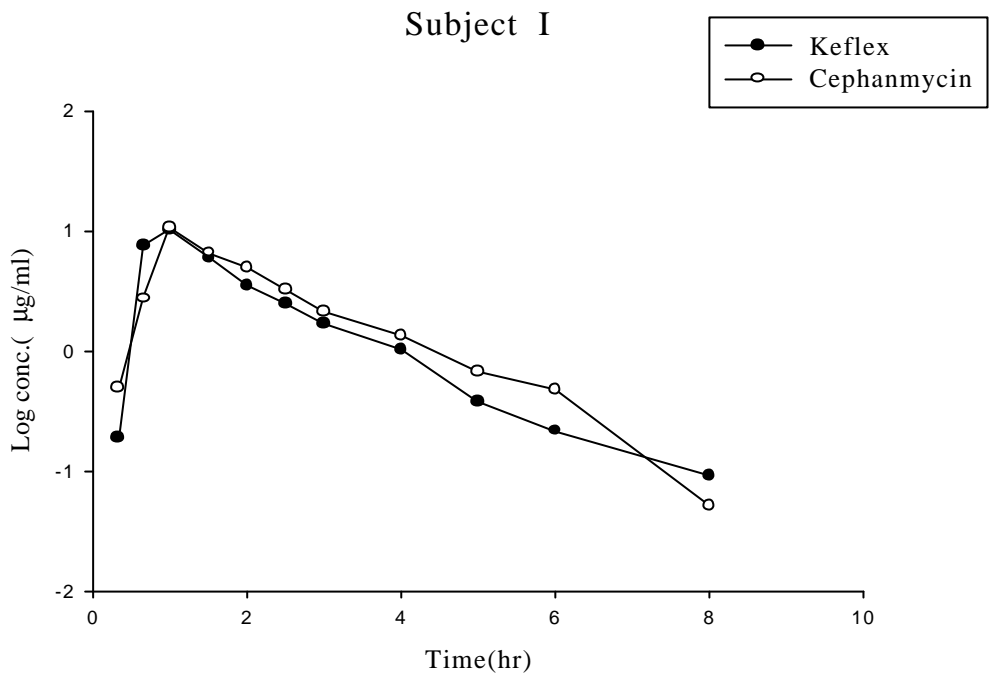


Subject G



Subject H





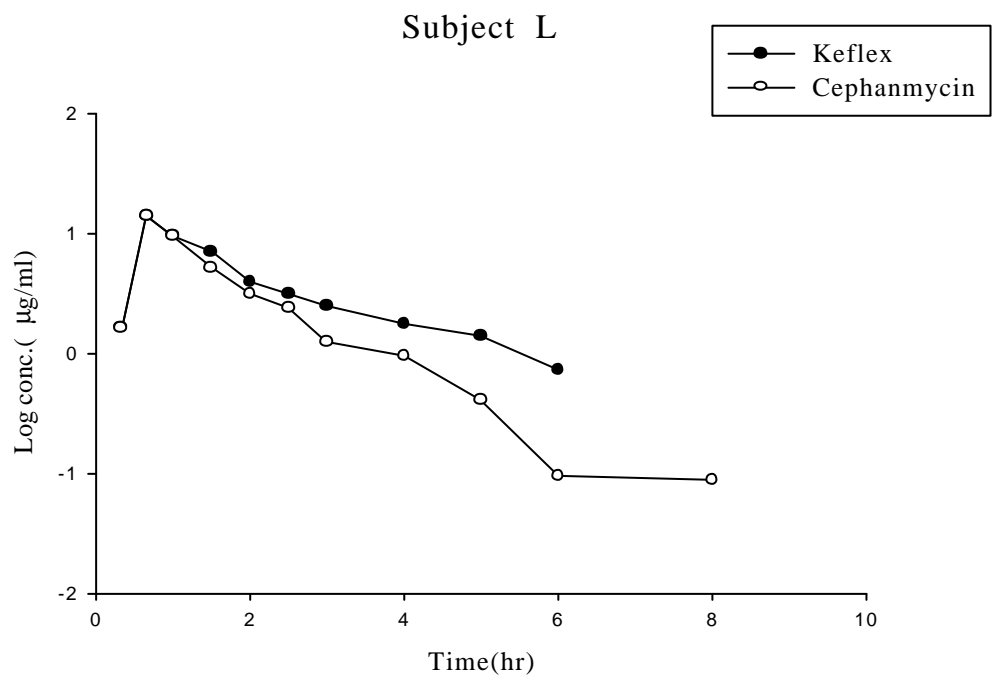
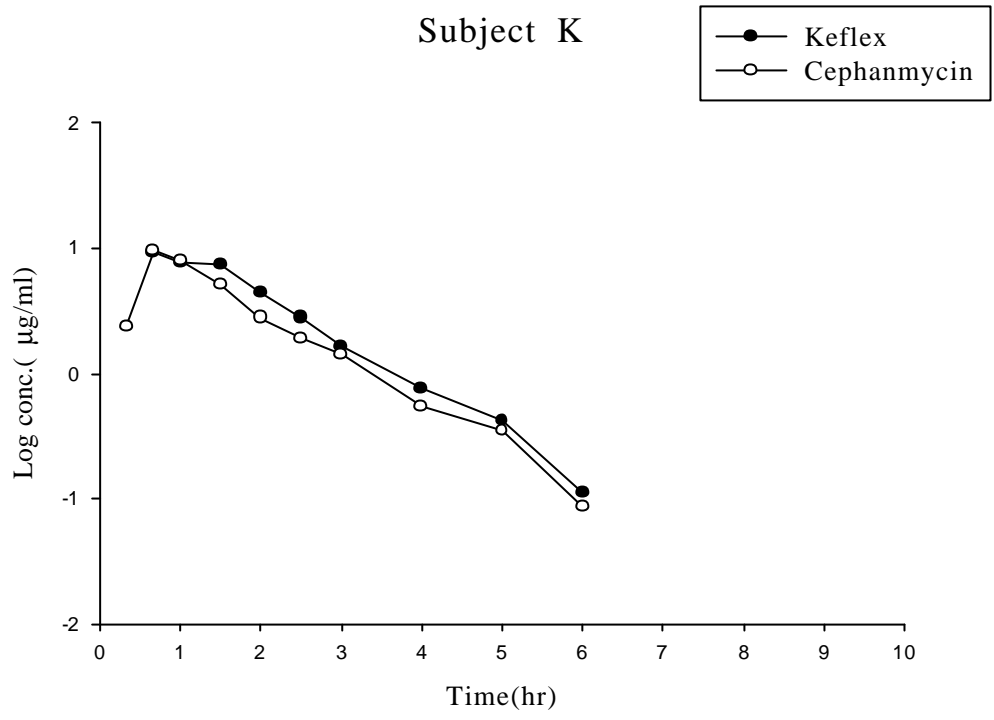


圖 8 Keflex[?] 與 Cephnamycin[?] 於受試者血漿中 cephalexin 之平均
血中 log 濃度圖

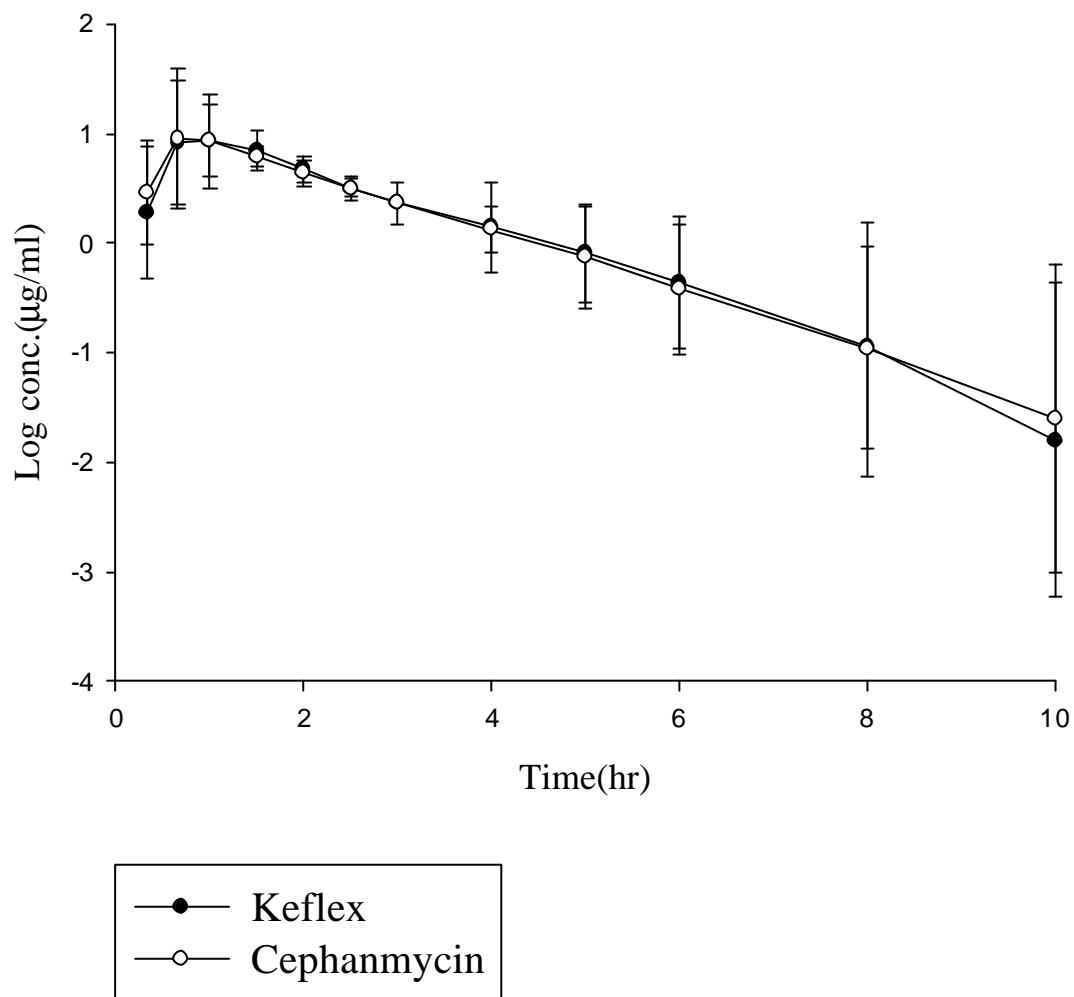


圖 9 尿液中 cephalexin 排除速率

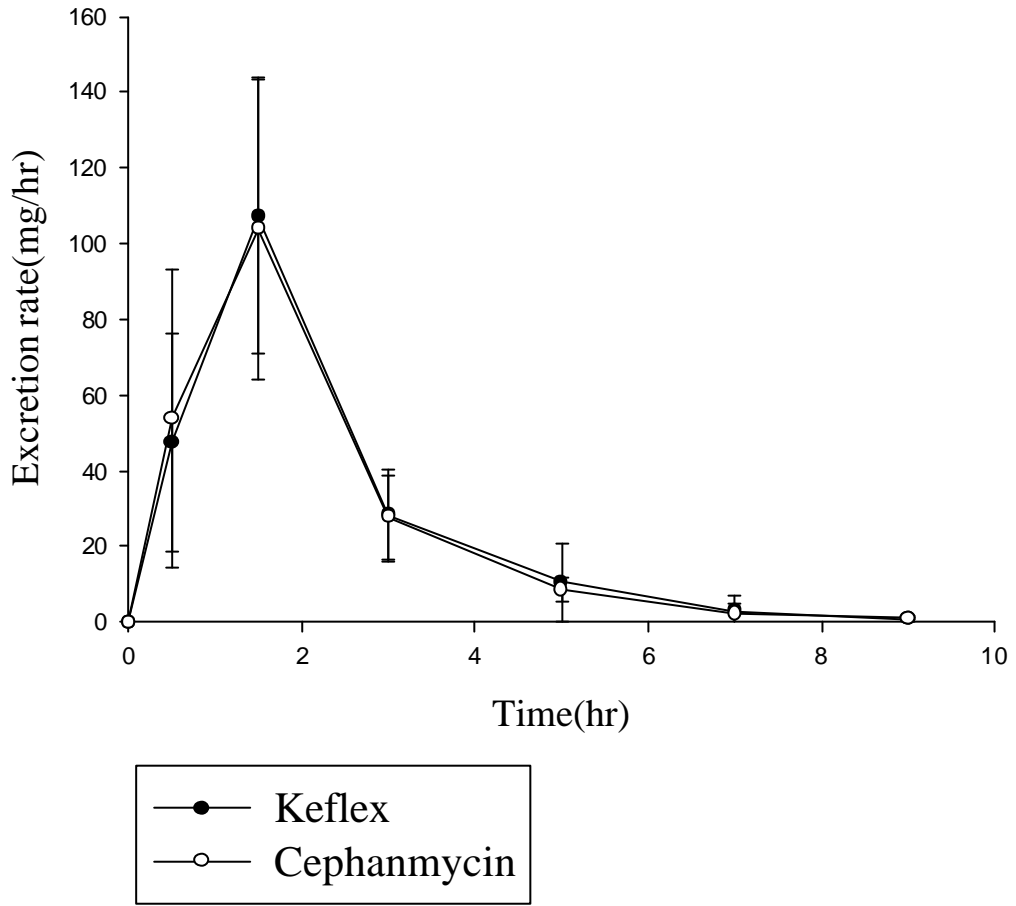
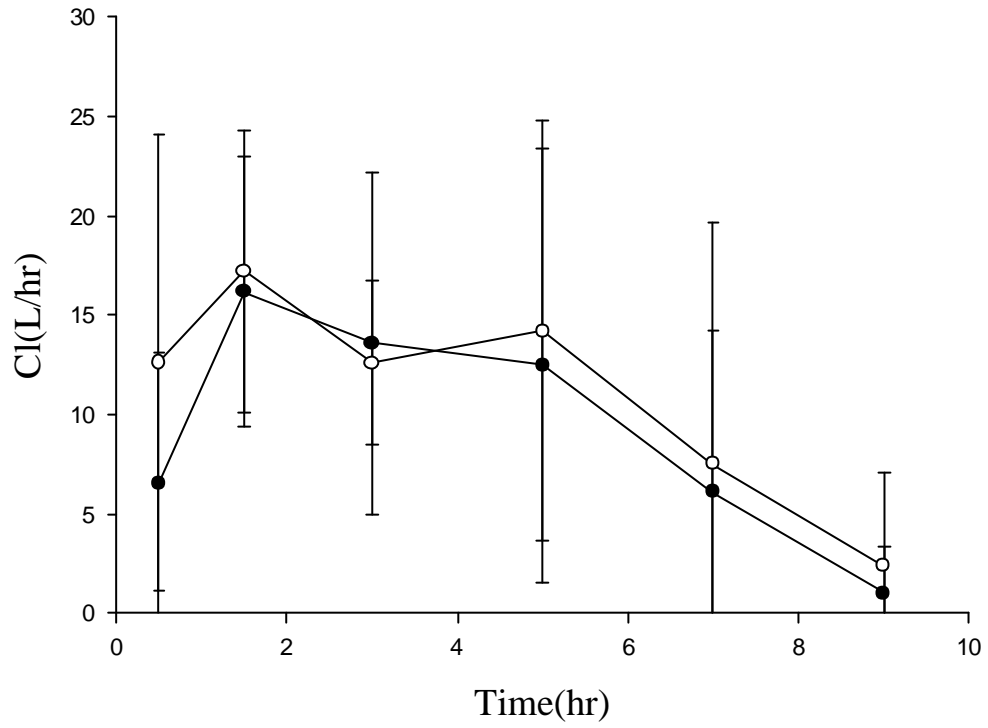


圖 10 腎清除率(Renal Clearance, L/hr)



附錄一

非室模式 (Non compartment model)

藥物動力學參數說明：

AUC_{0-10} ：血中藥物濃度對時間曲線，時間從 0 到最後抽血點之曲線下面積

($\mu\text{g} \cdot \text{min}/\text{ml}$)。

$$AUC_{0-8} = \int_0^8 C_p dt$$

$AUC_{0-\infty}$ ：血中藥物濃度對時間曲線，時間從 0 到無限大之曲線下面積

($\mu\text{g} \cdot \text{min}/\text{ml}$)。

$$AUC_{0-\infty} = \int_0^{\infty} C_p dt$$

C_{\max} ：投藥後所到達的最高血中濃度 ($\mu\text{g}/\text{ml}$)。

T_{\max} ：投藥後到達最高血中濃度的時間 (hr)。

CI/F : 藥物的清除率 (L/hr)。

$$CI / F = \text{Dose} / AUC$$

K : 藥物的排除速率常數 (hr⁻¹)。

T_{1/2} : 藥物之末端排除半衰期 (hr)。

$$T_{1/2} = 0.693 / K$$

V_{DSS}/F : 體內藥物分布達穩定狀態之分佈體積 (L)。

$$V_{DSS} / F = \text{Dose} / K \times AUC$$

MRT : 藥物之平均滯留時間 (hr)。

$$MRT = \int_0^{\infty} t x C_p dt / \int_0^{\infty} C_{\infty} dt = AUMC / AUC$$

AUC^{ss}_{inf} : 為達穩定狀態時，給藥時間至無限大時間之血中藥物濃度對時間曲

線下面積。

$$AUC_{inf} = AUC_{last} + C_{last} / K$$