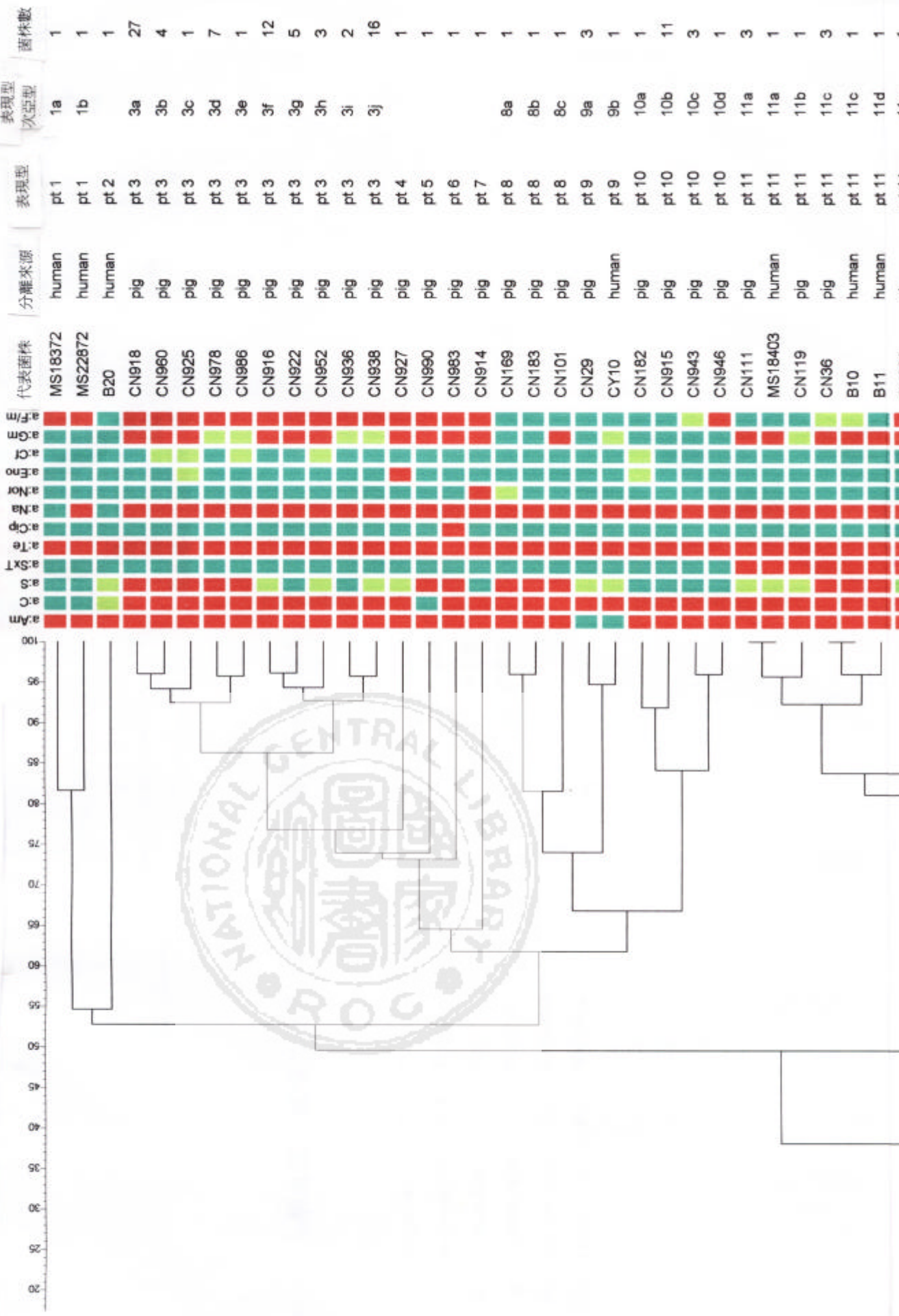


相似度百分比



代表菌株	分離來源	表現型	次亞型	菌株數
MS18372	human	pt 1	1a	1
MS22872	human	pt 1	1b	1
B20	human	pt 2		1
CN918	pig	pt 3	3a	27
CN960	pig	pt 3	3b	4
CN925	pig	pt 3	3c	1
CN978	pig	pt 3	3d	7
CN986	pig	pt 3	3e	1
CN916	pig	pt 3	3f	12
CN922	pig	pt 3	3g	5
CN952	pig	pt 3	3h	3
CN936	pig	pt 3	3i	2
CN938	pig	pt 3	3j	16
CN927	pig	pt 4		1
CN990	pig	pt 5		1
CN983	pig	pt 6		1
CN914	pig	pt 7		1
CN169	pig	pt 8	8a	1
CN183	pig	pt 8	8b	1
CN101	pig	pt 8	8c	1
CN29	pig	pt 9	9a	3
CY10	human	pt 9	9b	1
CN182	pig	pt 10	10a	1
CN915	pig	pt 10	10b	11
CN943	pig	pt 10	10c	3
CN946	pig	pt 10	10d	1
CN111	pig	pt 11	11a	3
MS18403	human	pt 11	11a	1
CN119	pig	pt 11	11b	1
CN36	pig	pt 11	11c	3
B10	human	pt 11	11c	1
B11	human	pt 11	11d	1