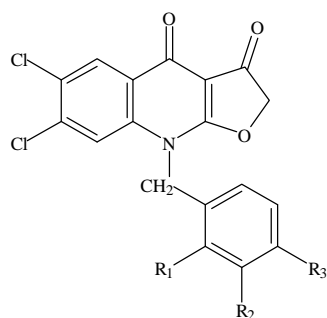


**Table 23** Effects on heart rate and contraction in rat right atria,ventricles and left atria of compounds **190-193**



No.	R <sub>1</sub>	R <sub>2</sub>	R <sub>3</sub>	Conc. ( $\mu$ M)	RA		RV	LA
					HR (%of control)	Tension %	Tension %	Tension %
<b>190</b>	H	H	H	0	263			
				10	248(94)	111	90	143
				30	210(80)	122	80	143
				100	203(77)	144	80	143
<b>191</b>	CH <sub>3</sub>	H	H	0	240			
				10	240(100)	114	100	100
				30	233(97)	86	100	100
				100	225(94)	129	100	111
<b>192</b>	H	CH <sub>3</sub>	H	0	255			
				10	233(91)	114	100	114
				30	233(91)	114	100	128
				100	218(85)	100	100	86
<b>193</b>	H	H	CH <sub>3</sub>	0	270			
				10	248(92)	100	100	100
				30	225(83)	117	90	110
				100	210(78)	117	90	120

(data were expressed as percentage of control ).