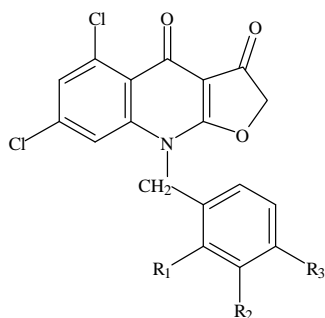


**Table 22** Effects on heart rate and contraction in rat right atria,ventricles and left atria of compounds **175**, **176** and **178**



No.	R <sub>1</sub>	R <sub>2</sub>	R <sub>3</sub>	Conc. ( $\mu$ M)	RA		RV	LA
					HR (%of control)	Tension %	Tension %	Tension %
<b>175</b>	H	H	H	0	240			
				10	225(94)	117	80	100
				30	210(88)	167	80	133
				100	195(81)	200	80	133
<b>176</b>	CH <sub>3</sub>	H	H	0	225			
				10	225(100)	100	100	100
				30	218(97)	100	100	100
				100	210(93)	125	108	113
<b>178</b>	H	H	CH <sub>3</sub>	0	225			
				10	203(90)	100	100	87.5
				30	195(87)	100	100	87.5
				100	188(84)	100	100	87.5

(data were expressed as percentage of control ).