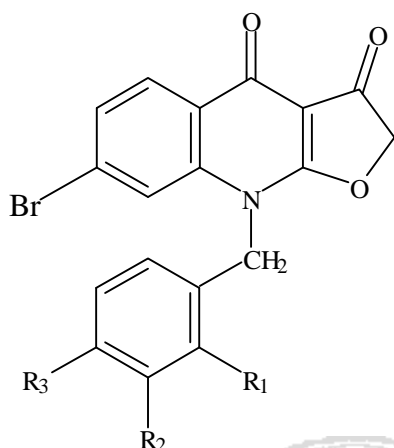


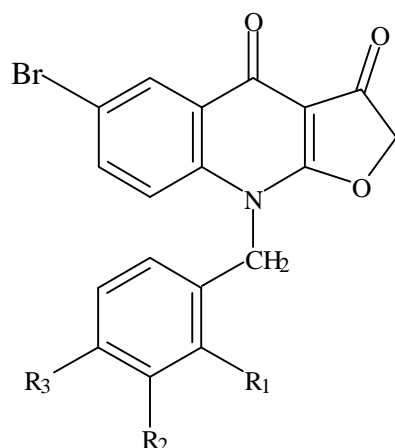
Table 18 Effects on heart rate and contraction in rat right atria, ventricles and left atria of compounds **99-101, 105, 107** and **108**



No.	R ₁	R ₂	R ₃	Conc. (μ M)	RA HR (%of control)	RV Tension	LA Tension	
99	F	H	H	0	240			
				10	210 (87.5)	150	103	125
				30	180 (75)	243	162.5	250
				100	165 (69)	271	175	250
100	H	F	H	0	203			
				10	195 (96.3)	106	114	100
				30	180 (89)	125	150	117
				100	173 (85)	125	186	133
101	H	H	F	0	270			
				10	230 (85)	167	109	143
				30	190 (70)	233	182	314
				100	0 (stop)	stop	218	371
105	H	OCH ₃	H	0	240			
				10	220 (92)	138	114	150
				30	190 (79)	150	157	250
				100	180 (75)	213	171	250
107	H	Cl	H	0	200			
				10	200 (100)	125	100	133
				30	190 (95)	113	90	133
				100	160 (80)	113	90	111
108	H	H	Cl	0	210			
				10	220 (105)	113	100	100
				30	240 (114)	125	100	167
				100	200 (95)	100	100	200

(data were expressed as percentage of control).

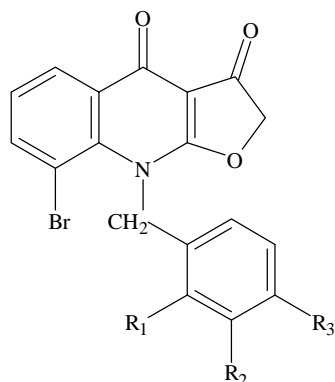
Table 20 Effects on heart rate and contraction in rat right atria, ventricles and left atria of compounds **155-163**



No.	R ₁	R ₂	R ₃	Conc. (μ M)	RA HR (%of control)	Tension	RV Tension	LA Tension
155	F	H	H	0	263			
				10	233 (89)	150	108	158
				30	210 (80)	200	100	316
				100	210 (80)	188	92	305
156	H	F	H	0	240			
				10	210 (87.5)	125	111	125
				30	203 (84.4)	150	111	225
				100	203 (84.4)	150	111	237.5
157	H	H	F	0	240			
				10	195 (81.3)	190	108.3	150
				30	180 (75)	400	133	260
				100	195 (81.3)	340	125	240
159	H	CH ₃	H	0	263			
				10	255 (97.1)	131	117	133
				30	248 (97)	150	133	167
				100	218 (85.3)	137.5	133	167
160	H	H	CH ₃	0	203			
				10	195 (96.3)	120	116	109
				30	173 (85)	160	150	136
				100	105 (52)	207	158	200
161	H	OCH ₃	H	0	248			
				10	240 (97)	133	85.7	122
				30	240 (97)	200	85.7	139
				100	180 (40)	217	57.1	139
162	H	Cl	H	0	263			
				10	233 (87)	212.5	95.4	120
				30	210 (80)	269	109	160
				100	188 (71.4)	275	100	220
163	H	H	Cl	0	248			
				10	225 (91)	103.5	125	122
				30	233 (94)	111	117	139
				100	225 (91)	107	117	133

(data were expressed as percentage of control).

Table 21 Effects on heart rate and contraction in rat right atria, ventricles and left atria of compounds **165-174**



No.	R ₁	R ₂	R ₃	Conc. (μ M)	RA HR (%ofcontrol)	Tension	RV Tension	LA Tension
165	F	H	H	0	240			
				10	230(96)	143	100	150
				30	210(88)	171	120	200
				100	190(79)	143	130	225
166	H	F	H	0	220			
				10	220(100)	122	117	133
				30	200(91)	144	167	200
				100	180(82)	133	150	200
167	H	H	F	0	240			
				10	200(91)	143	133	150
				30	170(77)	186	167	300
				100	170(77)	200	200	350
168	CH ₃	H	H	0	220			
				10	210(95.5)	100	100	150
				30	170(77)	175	147	200
				100	0(stop)	stop	250	300
169	H	CH ₃	H	0	203			
				10	180(89)	160	100	133
				30	158(78)	240	167	167
				100	150(74)	200	200	167
170	H	H	CH ₃	0	220			
				10	190(86)	133	87.5	186
				30	160(73)	200	112.5	300
				100	120(55)	233	100	329
173	H	Cl	H	0	195			
				10	187.5(96)	100	112.5	100
				30	172.5(88.5)	100	100	133
				100	172.5(88.5)	100	75	116.5
174	H	H	Cl	0	270			
				10	195(72)	200	150	114
				30	180(67)	350	187.5	114
				100	165(61)	375	200	114

(data were expressed as percentage of control).