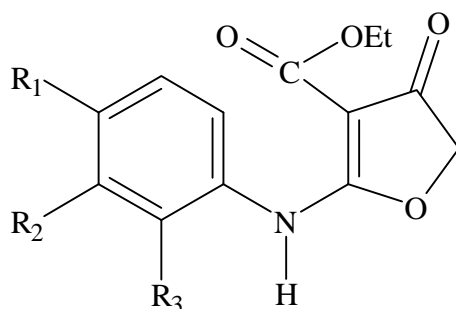


Table 15 Effects on heart rate and contraction in rat right atria, ventricles and left atria of compounds **1-15, 21**



No.	R ₁	R ₂	R ₃	Conc. (μ M)	RA		RV	LA
					HR	Tension	Tension	Tension
1	H	H	H		n=3	n=3	n=4	n=4
				3	100	98 \pm 1.63	96.75 \pm 1.70	104.75 \pm 2.01
				10	100	94.33 \pm 2.32	92.75 \pm 5.87	105.75 \pm 2.01
				30	100 \pm 1.89	95 \pm 4.08	93 \pm 6.73	105.25 \pm 3.94
				100	102.76 \pm 2.18	98.67 \pm 4.74	90.25 \pm 6.52	107.25 \pm 3.06
2	H	CH ₃	H		n=3	n=3	n=3	n=3
				3	100	102.67 \pm 3.57	95.66 \pm 3.47	103 \pm 2.44
				10	101.33 \pm 1.08	96.33 \pm 2.99	90.33 \pm 5.81	106.33 \pm 2.59
				30	100	91.33 \pm 7.20	90.33 \pm 5.81	110.33 \pm 5.62
				100	95.67 \pm 0.27	103.33 \pm 1.22	87 \pm 8.01	109.33 \pm 6.41
3	H	C ₂ H ₅	H		n=3	n=3	n=3	n=3
				3	95 \pm 2.35	102 \pm 3.85	104.66 \pm 4.90	99 \pm 4.10
				10	90 \pm 4.08	103 \pm 4.98	112 \pm 11.43	97.33 \pm 3.47
				30	85.33 \pm 6.33	103.67 \pm 7.24	120.33 \pm 21.42	92.33 \pm 1.96
				100	* 75.5 \pm 7.42	* 97 \pm 16.97	* 135.5 \pm 19.44	* 72 \pm 3.53
4	H	OCH ₃	H		n=3	n=3	n=3	n=2
				3	99.33 \pm 2.84	100	100.33 \pm 3.07	99.5 \pm 2.47
				10	97.67 \pm 1.90	97.67 \pm 1.90	103.67 \pm 5.62	103 \pm 2.12
				30	96 \pm 1.69	97 \pm 4.64	106 \pm 7.48	102.5 \pm 4.59
				100	94.33 \pm 2.41	114.33 \pm 3	116.67 \pm 9.36	105 \pm 0.71
5	H	OC ₂ H ₅	H		n=2	n=2	n=2	n=2
				3	98 \pm 1.41	103 \pm 12.02	97.5 \pm 6.71	104 \pm 2.82
				10	98 \pm 1.41	93 \pm 4.94	99.5 \pm 8.13	104 \pm 7.77
				30	96	93 \pm 4.94	103.5 \pm 2.47	100.5 \pm 5.3
				100	85.5 \pm 1.06	103 \pm 12.02	107 \pm 4.94	100
6	H	Cl	H		n=3	n=3	n=3	n=2
				3	100	93.33 \pm 5.44	97.33 \pm 2.17	100
				10	100	99.67 \pm 4.48	97.33 \pm 2.17	100
				30	100.33 \pm 2.12	93.67 \pm 2.59	89 \pm 5.43	104.5 \pm 3.18
				100	98.5 \pm 4.59	105.5 \pm 10.25	83.33 \pm 8.27	96 \pm 0.70
7	H	F	H		n=3	n=3	n=3	n=3
				3	100	100	94.33 \pm 2.59	89 \pm 8.98
				10	100	98 \pm 1.63	94.33 \pm 2.59	89 \pm 8.98
				30	102.67 \pm 1.08	98 \pm 1.63	92.33 \pm 1.36	103 \pm 5.35
				100	102.67 \pm 1.08	94.67 \pm 2.37	85.33 \pm 2.32	108.67 \pm 5.52

(data were expressed as percentage of control).

Table 15 (continued)

No.	R ₁	R ₂	R ₃	Conc. (μ M)	HR	RA	Tension	RV Tension	LA Tension
8	H	Br	H			n=1	n=1	n=1	n=1
				10	94	100	91.3	100	
				30	91	100	87	106	
				100	85	100	87	139	
9	CH ₃	H	H			n=2	n=2	n=2	n=2
				3	97 \pm 2.12	91 \pm 1.41	100	98 \pm 1.41	
				10	97 \pm 2.12	91 \pm 1.41	92 \pm 1.41	92.5 \pm 0.35	
				30	97 \pm 2.12	91 \pm 1.41	91.5 \pm 2.47	90.5 \pm 1.76	
				100	99 \pm 0.70	87.5 \pm 1.06	85.5 \pm 3.18	86 \pm 4.94	
10	C ₂ H ₅	H	H			n=3	n=3	n=3	n=2
				3	100	95.67 \pm 3.53	92.66 \pm 0.72	98.5 \pm 1.06	
				10	98.33 \pm 1.36	95.67 \pm 3.53	90.67 \pm 1.18	96.5 \pm 2.47	
				30	95.33 \pm 2.37	92.67 \pm 5.98	81.67 \pm 4.83	94.5 \pm 3.88	
				100	89 \pm 4.78	85.33 \pm 7.07	73.33 \pm 6.06	85 \pm 6.36	
11	OCH ₃	H	H			n=3	n=3	n=3	n=3
				3	100	86.67 \pm 6.90	99.67 \pm 3.53	100	
				10	100	91.67 \pm 3.47	96.67 \pm 5.81	103.67 \pm 2.99	
				30	100	96.33 \pm 2.99	94.33 \pm 4.62	104 \pm 6.54	
				100	100	92 \pm 3.77	89.33 \pm 8.99	101 \pm 20.01	
12	OC ₂ H ₅	H	H			n=2	n=2	n=2	n=2
				3	100	97.5 \pm 1.76	96 \pm 2.82	107 \pm 2.12	
				10	98 \pm 1.41	104 \pm 6.36	94 \pm 4.24	112 \pm 2.65	
				30	96	110 \pm 10.60	92 \pm 5.65	114 \pm 4.24	
				100	92 \pm 2.82	91.5 \pm 2.47	102.5 \pm 15.90	106 \pm 4.24	
13	Cl	H	H			n=3	n=3	n=3	n=3
				3	101.33 \pm 1.08	97.66 \pm 4.57	93.33 \pm 4.27	101.66 \pm 4.52	
				10	100	96.33 \pm 5.62	89.33 \pm 6.07	107 \pm 6.37	
				30	98.67 \pm 1.08	94 \pm 6.18	85.33 \pm 4.22	109.33 \pm 6.77	
				100	94.33 \pm 6.98	96.66 \pm 9.15	75.67 \pm 3.81	109.33 \pm 6.77	
14	F	H	H			n=2	n=2	n=2	n=2
				3	105	94.5 \pm 3.88	103.5 \pm 2.47	96.5 \pm 2.47	
				10	105	103 \pm 2.12	106.5 \pm 4.59	100	
				30	107 \pm 1.41	94.5 \pm 3.88	110 \pm 7.07	93 \pm 4.94	
				100	107 \pm 1.41	83 \pm 3.53	105.5 \pm 10.25	85.5 \pm 10.25	
15	Br	H	H			n=1	n=1	n=1	n=1
				10	97	91.7	93.8	100	
				30	97	100	87.5	100	
				100	100	108	75	133	
21	H	H	Br			n=1	n=1	n=1	n=1
				10	100	100	100	100	
				30	96	100	150	100	
				100	85	150	400	100	

(data were expressed as percentage of control).