

表 14. 酪胺酸對延胡索癒合組織生長之影響

Table 14. Effect of tyrosine on callus growth of *C. yanhusuo*

Basal medium* with tyrosine (mg/L)	Average fresh weight of callus (g)**
0	1.496 ^c
5	2.124 ^a
10	1.803 ^b
15	1.668 ^b
20	1.414 ^c

* Basal medium : MS salt with 3 % sucrose and 0.9 % Difco agar, pH = 5.7 ± 0.1.
Data was collected after 30 days of culture.

** Same as Table 2.

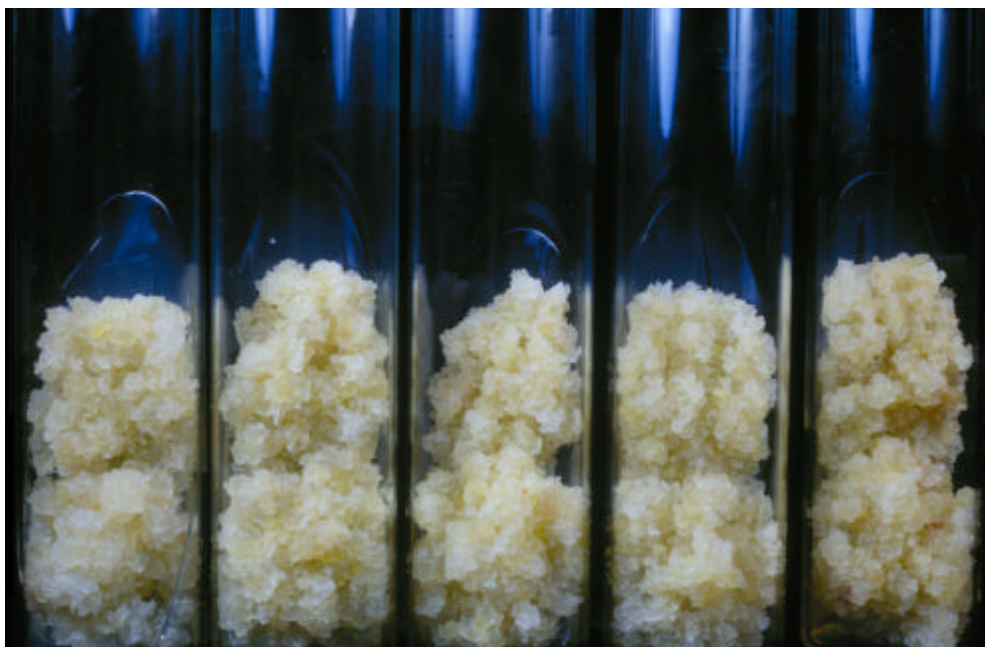


圖 22. 酪胺酸對癒合組織生長之影響

(由左至右分別為添加 0、5、10、15 及 20 mg/L 酪胺酸之培養基)

Figure 22. Effect of tyrosine on callus growth of *C. yanhusuo*