

表 3. 碳源對延胡索癒合組織生長之影響

Table 3. Effect of carbon source on callus growth of *C. yanhusuo*

Carbon source 3%*	Average fresh weight of callus (g)**
Fructose	1.146 ^c
Glucose	1.335 ^b
Maltose	0.306 ^d
Sucrose	1.594 ^a

* Basal medium: MS salt with 0.9 % Difco agar, pH = 5.7 ± 0.1. Data was collected after 30 days of culture.

** Same as Table 2.

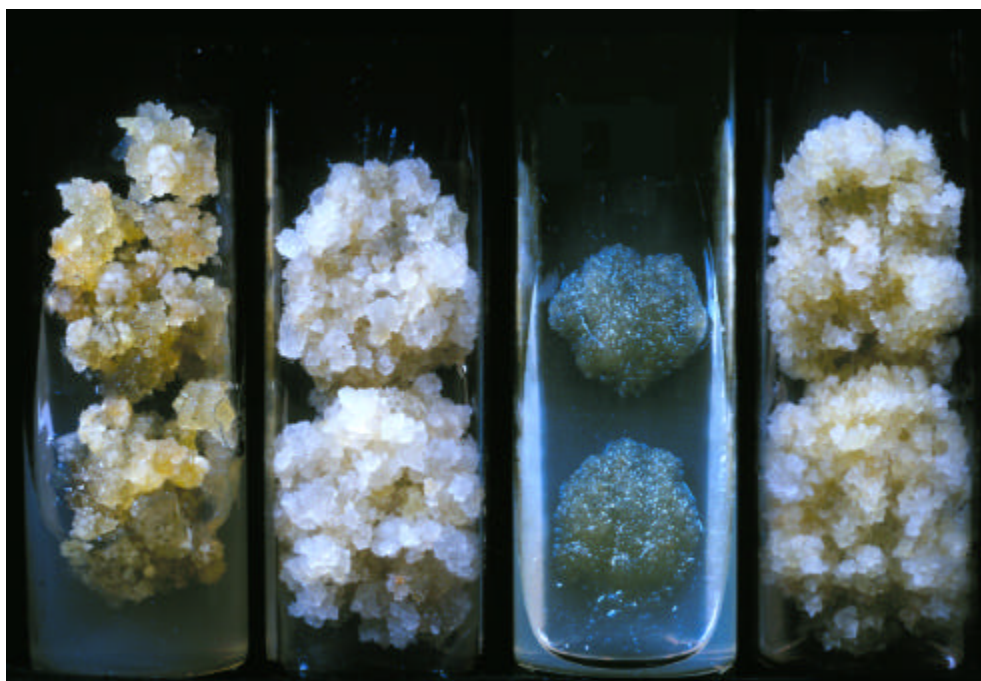


圖 18. 不同糖類對癒合組織生長之影響

(由左至右為 fructose、glucose、maltose 及 sucrose 培養基)

Figure 18. Effect of carbon source on callus growth of *C. yanhusuo*

